

# SWABY NINE DEPARTURE (SWABY9.SWABY)

[USN]

PATUXENT RIVER, MARYLAND

•285

TACAN required

Knots	60	120	180	240	300	360
V/V(fpm)	310	620	930	1240	1550	1860

ATC Climb Rate to 9000

ATIS 322.425  
 CLNC DEL 135.2 316.125  
 GND CON 120.6 336.4  
 TOWER 123.7 343.65  
 APP/DEP CON ★ 121.0 250.3

Departure Rwy 2-20 not authorized.  
 Minimum filing alt 10,000.

NAS PATUXENT RIVER  
 Chan 39 (Y) NHK

N38° 16.86'  
 W76° 24.64'

GORDONSVILLE  
 115.6 GVE

Chan 103

N38°00.82'  
 W78°09.18'

SWABY  
 N37° 52.38'  
 W76° 31.20'  
 9000

HOPEWELL  
 112.0 HPW

Chan 57

N37°19.73'  
 W77°06.96'

HARCUM  
 108.8 HCM

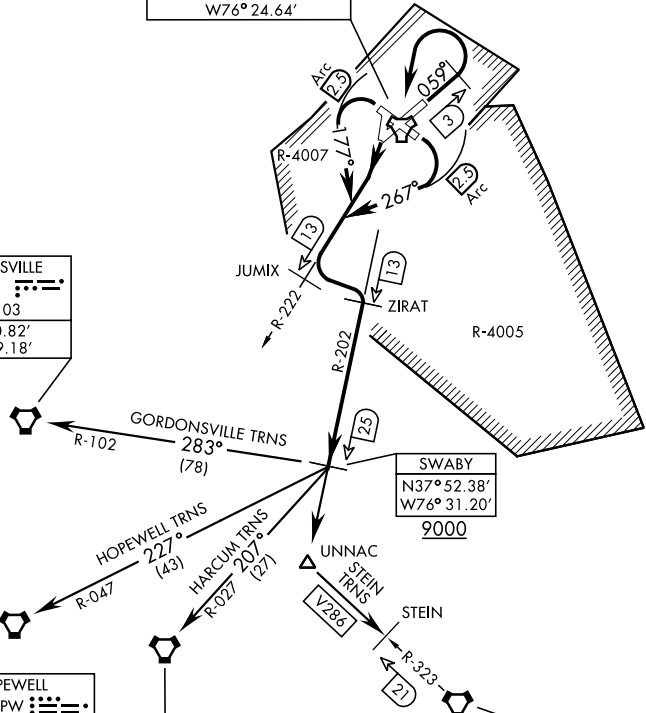
Chan 25

N37°26.92'  
 W76°42.68'

CAPE CHARLES  
 112.2 CCV

Chan 59

N37°20.85'  
 W75°59.86'



NE-3, 26 DEC 2024 to 23 JAN 2025

NE-3, 26 DEC 2024 to 23 JAN 2025

### ATC BRIEF REQUIRED

## 135.2 316.125

Note: Chart not to scale  
 (NARRATIVE ON FOLLOWING PAGE)

# SWABY NINE DEPARTURE (SWABY9.SWABY)

PATUXENT RIVER, MARYLAND