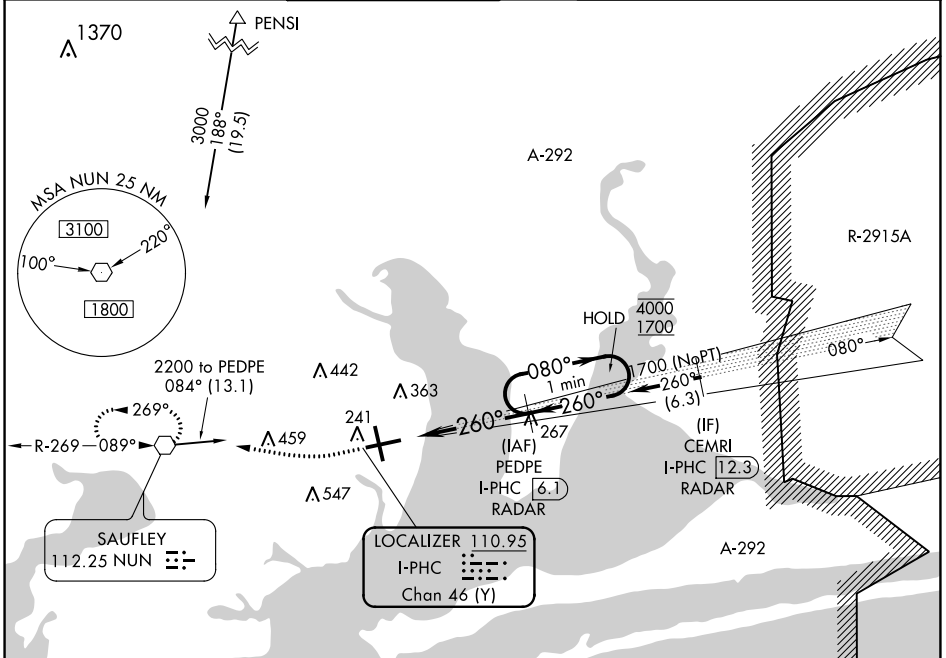


LOC/DME I-PHC <b>110.95</b> Chan <b>46</b> (Y)	APP CRS <b>260°</b>	Rwy Idg <b>7000</b> TDZE <b>113</b> Apt Elev <b>121</b>
--	------------------------	---

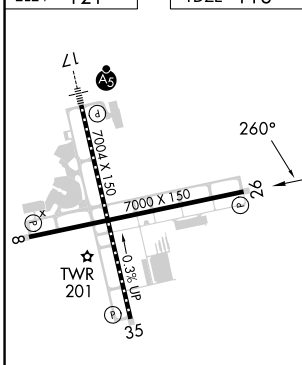
# LOC RWY 26

PENSACOLA INTL (PNS)

DME or RADAR required.		MISSED APPROACH: Climb to 600 then climbing right turn to 3000 direct NUN VOR and hold, continue climb-in-hold to 3000.			
ATIS <b>121.25</b>	PENSACOLA APP CON <b>119.0 269.375</b>	PENSACOLA TOWER ★ <b>119.9</b> (CTAF) <b>257.8</b>	GND CON <b>121.9 348.6</b>	CLNC DEL <b>123.725 256.875</b>	UNICOM <b>122.95</b>

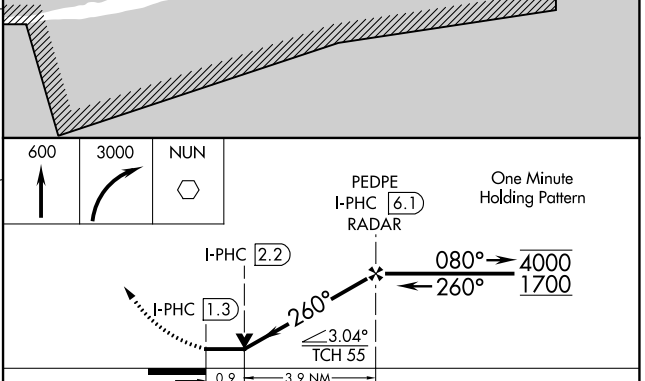


ELEV 121	TDZE 113
----------	----------



REIL Rws 8, 26 and 35  
 TDZ/CL Rwy 17  
 HIRL Rws 8-26 and 17-35  
 FAF to MAP 4.7 NM

Knots	60	90	120	150	180
Min:Sec	4:42	3:08	2:21	1:53	1:34



CATEGORY	A	B	C	D
S-26	460-1 347 (400-1)			
CIRCLING	580-1 459 (500-1)	680-1 559 (600-1)	860-2 739 (800-2)	860-2¼ 739 (800-2¼)

SE-3, 26 DEC 2024 to 23 JAN 2025

SE-3, 26 DEC 2024 to 23 JAN 2025