

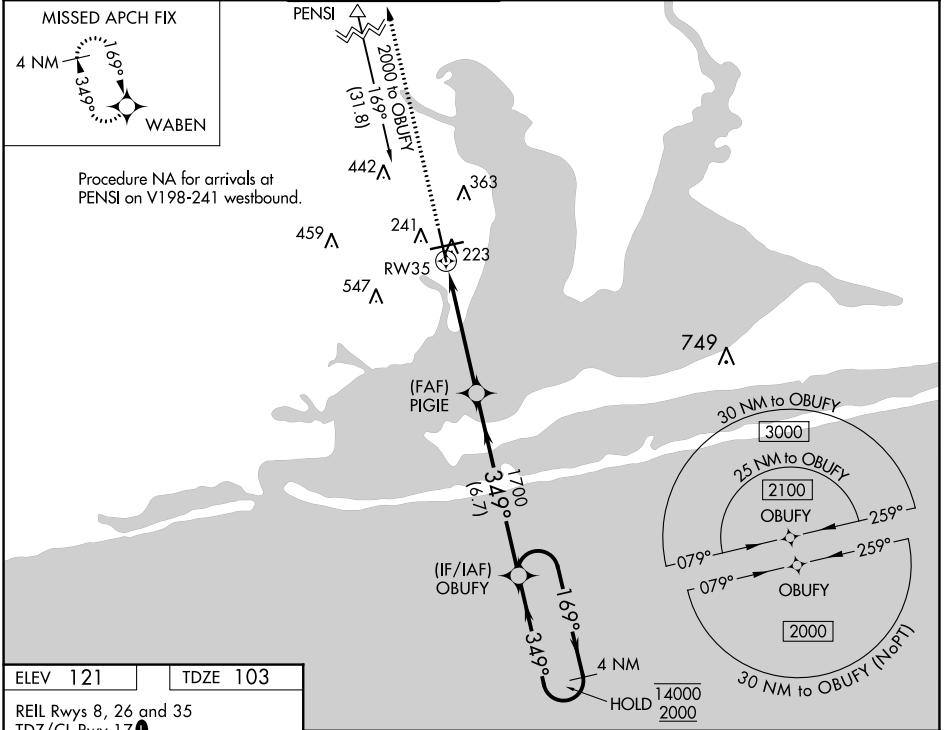
WAAS CH 40020 W35A	APP CRS 349°	Rwy Idg 7004 TDZE 103 Apt Elev 121
--	------------------------	---

RNAV (GPS) RWY 35

PENSACOLA INTL (PNS)

RNP APCH-GPS.		MISSED APPROACH: Climb to 2700 direct WABEN and hold.			
<p>▼ For uncompensated Baro-VNAV systems, LNAV/VNAV NA below 1°C or above 54°C. CAUTION: Intensive VFR student training in vicinity of airport.</p>					

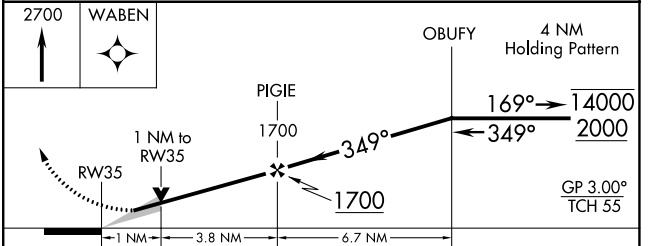
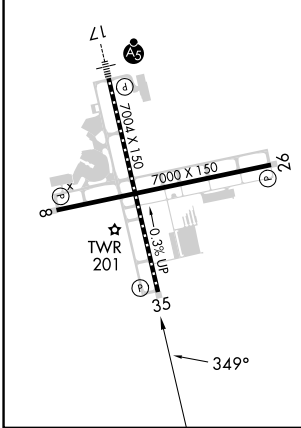
ATIS 121.25	PENSACOLA APP CON 119.0 269.375	PENSACOLA TOWER ★ 119.9 (CTAF) 0 257.8	GND CON 121.9 348.6	CLNC DEL 123.725 256.875	UNICOM 122.95
-----------------------	---	--	-------------------------------	------------------------------------	-------------------------



Procedure NA for arrivals at PENSI on V198-241 westbound.

ELEV 121	TDZE 103
-----------------	-----------------

REIL Rwy 8, 26 and 35
TDZ/CL Rwy 17
HIRL Rwy 8-26 and 17-35



CATEGORY	A	B	C	D
LPV DA		303/40	200 (200-¾)	
LNAV/VNAV DA		384/45	281 (300-¾)	
LNAV MDA		480/55	377 (400-1)	
CIRCLING	580-1	680-1	860-2	860-2¼
	459 (500-1)	559 (600-1)	739 (800-2)	739 (800-2¼)

SE-3, 26 DEC 2024 to 23 JAN 2025

SE-3, 26 DEC 2024 to 23 JAN 2025