


LOC/DME I-RJG 110.75 Chan 44 (Y)	APP CRS 258°	Rwy Idg TDZE Apt Elev	7800 1126 1135
---	------------------------	-----------------------------	---

ILS or LOC RWY 25L

PHOENIX SKY HARBOR INTL (PHX)

Autopilot coupled approach NA below 1925.
Simultaneous approach authorized with Rwy 26.

MALS  MISSED APPROACH: Climb to 3000 then climbing left turn to 5000 on heading 130° and PXR R-163 to POPKE/15 DME and hold.

D-ATIS 127.575	PHOENIX APP CON 128.65 353.9	PHOENIX TOWER 118.7 278.8 (Rwy 8-26) 120.9 254.3 (Rwy 7L-25R, 7R-25L)	GND CON 119.75 269.2 (N) 132.55 269.2 (S)	CLNC DEL 118.1 269.2	CPDLC
--------------------------	--	---	---	--------------------------------	-------

△ 2358

DME or RADAR REQUIRED

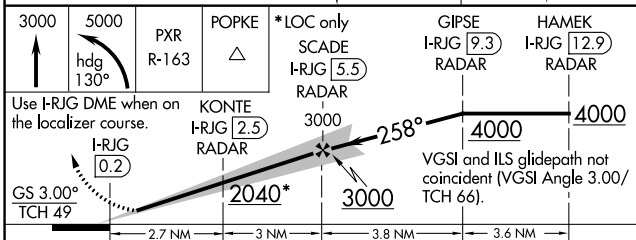
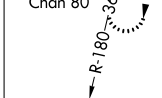
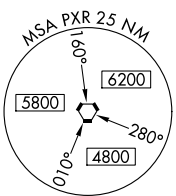
LOCALIZER 110.75
I-RJG
Chan 44 (Y)

PHOENIX 115.6 PXR
Chan 103

WILLIE 113.3 IWA
Chan 80

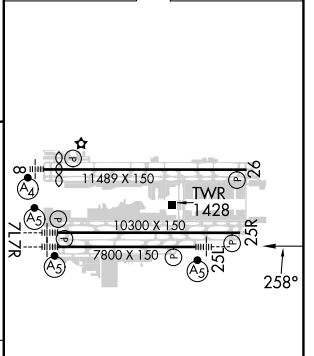
ALTERNATE MISSED APCH FIX

WILLIE IWA 113.3
Chan 80



3000	5000	PXR R-163	POPKE △	*LOC only	GIPSE I-RJG 9.3	HAMEK I-RJG 12.9
↑	hdg 130°			SCADE I-RJG 5.5	RADAR	RADAR
Use I-RJG DME when on the localizer course.			KONTE I-RJG 2.5	RADAR		
GS 3.00° TCH 49				3000	4000	4000
				2040*	3000	
				2.7 NM	3 NM	3.8 NM
						3.6 NM
CATEGORY	A	B	C	D		
S-ILS 25L	1326-1/2		200 (200-1/2)			
S-LOC 25L	1520-1/2		394 (400-1/2)		1520-3/4	394 (400-3/4)
CIRCLING	1740-1	605 (700-1)	2040-2 3/4	905 (1000-2 3/4)	2560-3	1425 (1500-3)

ELEV 1135	D	TDZE 1126
-----------	---	-----------



HIRL Rwy 8-26, 7L-25R and 7R-25L	REIL Rwy 26				
FAF to MAP 5.6 NM					
Knots	60	90	120	150	180
Min:Sec	5:36	3:44	2:48	2:14	1:52

SW-4, 26 DEC 2024 to 23 JAN 2025

SW-4, 26 DEC 2024 to 23 JAN 2025