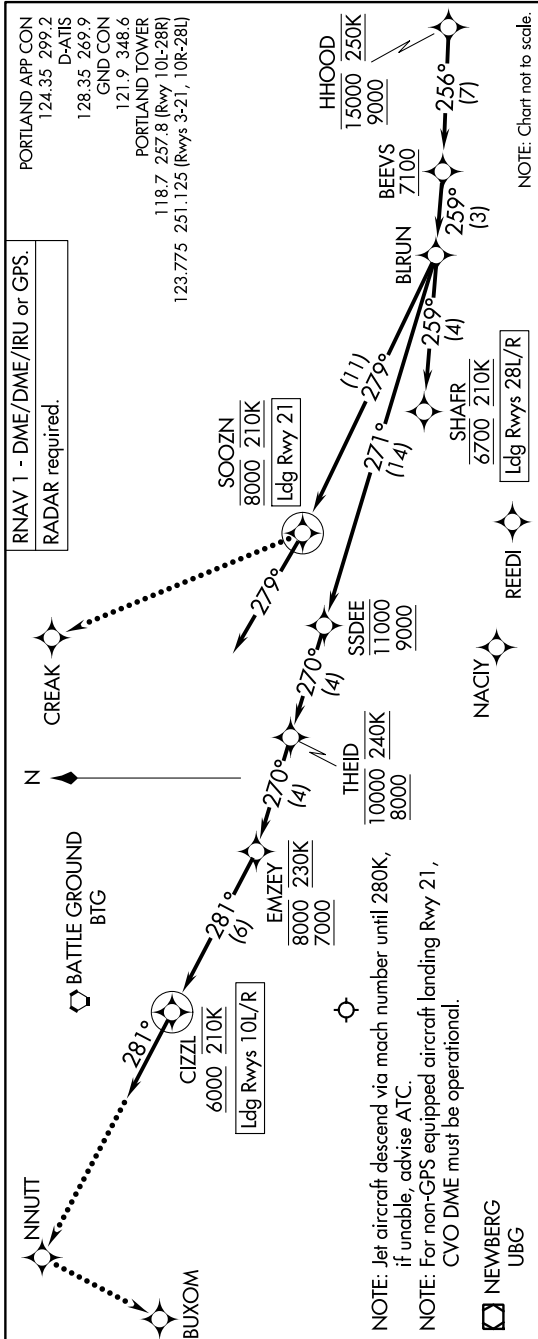


HHOOD FIVE ARRIVAL (RNAV) Arrival Routes

NW-1, 26 DEC 2024 to 23 JAN 2025



ARRIVAL ROUTE DESCRIPTION

From HHOOD on track 256° to cross BEEVS at or above 7100, then on track 259° to BIRUN.
LANDING RUNWAYS 10L/R: From BIRUN on track 271° to cross SSDEE between 9000 and 11000, then on track 270° to cross THEID between 8000 and 10000 and at 240K, then on track 270° to cross EMZEY between 7000 and 8000 and at 230K, then on track 281° to cross CIZZL at or above 6000 and at 210K, then on track 281°. Expect RADAR vectors to final approach course.
LANDING RUNWAY 21: From BIRUN on track 279° to cross SOOZN at 8000 and at 210K, then on track 279°. Expect RADAR vectors to final approach course.

LANDING RUNWAYS 28L/R: From BIRUN on track 259° to cross SHAFR at 6700 and at 210K. Expect RNAV or ILS Rwy 28L/R approach.

LOST COMMUNICATIONS

Maintain Rwy transition terminus altitude until established on approach procedure.
RUNWAYS 10L/R: After CIZZL, proceed to NNUJT, then left turn to BUXOM, conduct the ILS or LOC Rwy 10L approach.
RUNWAY 21: After SOOZN turn right to CREAK and proceed on the LOC/DME Rwy 21 approach.
RUNWAYS 28L/R: After SHAFR proceed on the ILS or LOC Rwy 28R approach.

NW-1, 26 DEC 2024 to 23 JAN 2025

HHOOD FIVE ARRIVAL (RNAV) Arrival Routes