

PORTLAND, OREGON

HI-ILS or LOC RWY 28R

LOC/DME I-AP 111.3 Chan 50	APCH CRS 283°	Rwy Idg TDZE Arpt Elev 9290 31 31
--	-------------------------	---

[USAF]

PORTLAND INTL (KPDJ)

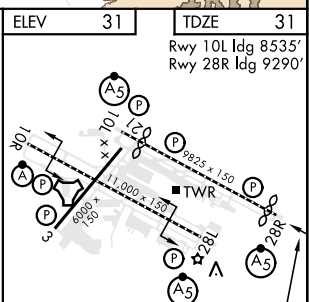
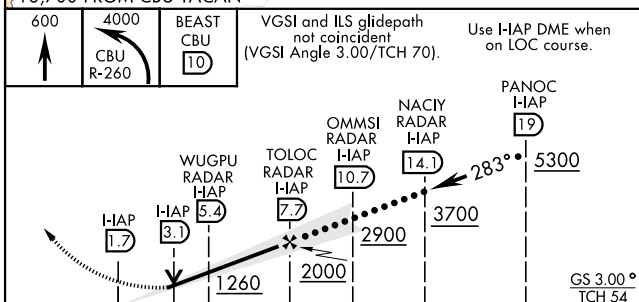
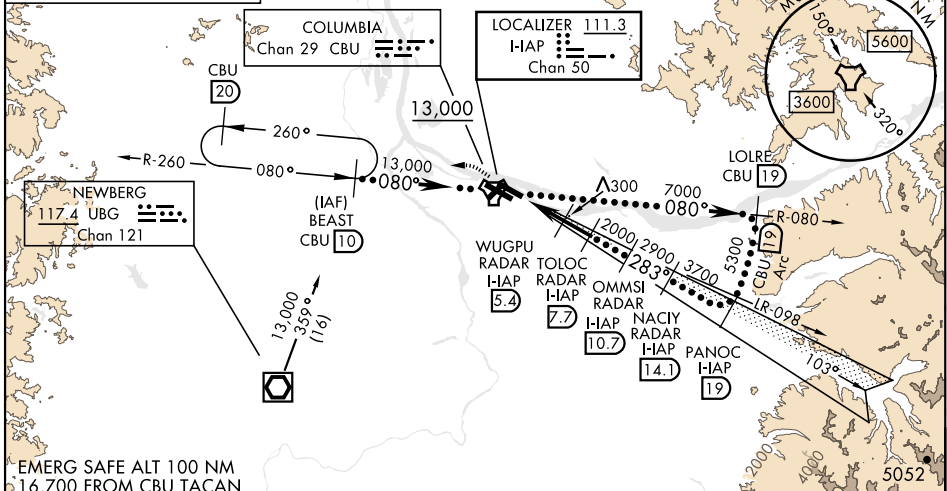
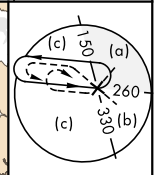
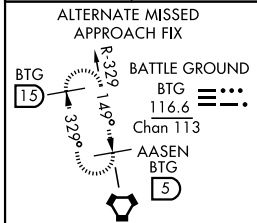
RADAR or DME required.

▼ *When ALS inop, increase CAT E RVR to 40.
 **When ALS inop, increase CAT E vis to 1½.



MISSED APPROACH: Climb to 600 then climbing left turn to 4000 on CBU TACAN R-260 to BEAST/ CBU 10 DME and hold, continue climb in holding to 4000.

ATIS 128.35 269.9	APP CON 118.1 284.6 (100°-279°) 124.35 299.2 (280°-099°)	TOWER 118.7 257.8 Rwy 10L-28R 123.775 251.125 Rwy 3-21, 10R-28L	GND CON 121.9 348.6	CLNC DEL 120.125 318.1
-----------------------------	--	---	-------------------------------	----------------------------------



CATEGORY	C	D	E
S-ILS 28R *	281/24	250	(300-½)
S-LOC 28R **	560/55	529	(600-1)
CIRCLING	1060-3	1029	(1100-3)
			1140-3 1109 (1200-3)

ELEV	31	TDZE	31
			Rwy 10L Idg 8535' Rwy 28R Idg 9290'
REIL Rwy 3 and 21 TDZL/CL Rwy 10R MIRL Rwy 3-21 HIRL Rwy 10L-28R and 10R-28L			
FAF to MAP 6 NM			
Knots	120	140	160 180 200
Min:Sec	3:00	2:34	2:15 2:00 1:48

PORTLAND, OREGON

45°35'N-122°36'W

PORTLAND INTL (KPDJ)

Amdt 4A 21MAR24

HI-ILS or LOC RWY 28R

NW-1, 26 DEC 2024 to 23 JAN 2025

NW-1, 26 DEC 2024 to 23 JAN 2025