

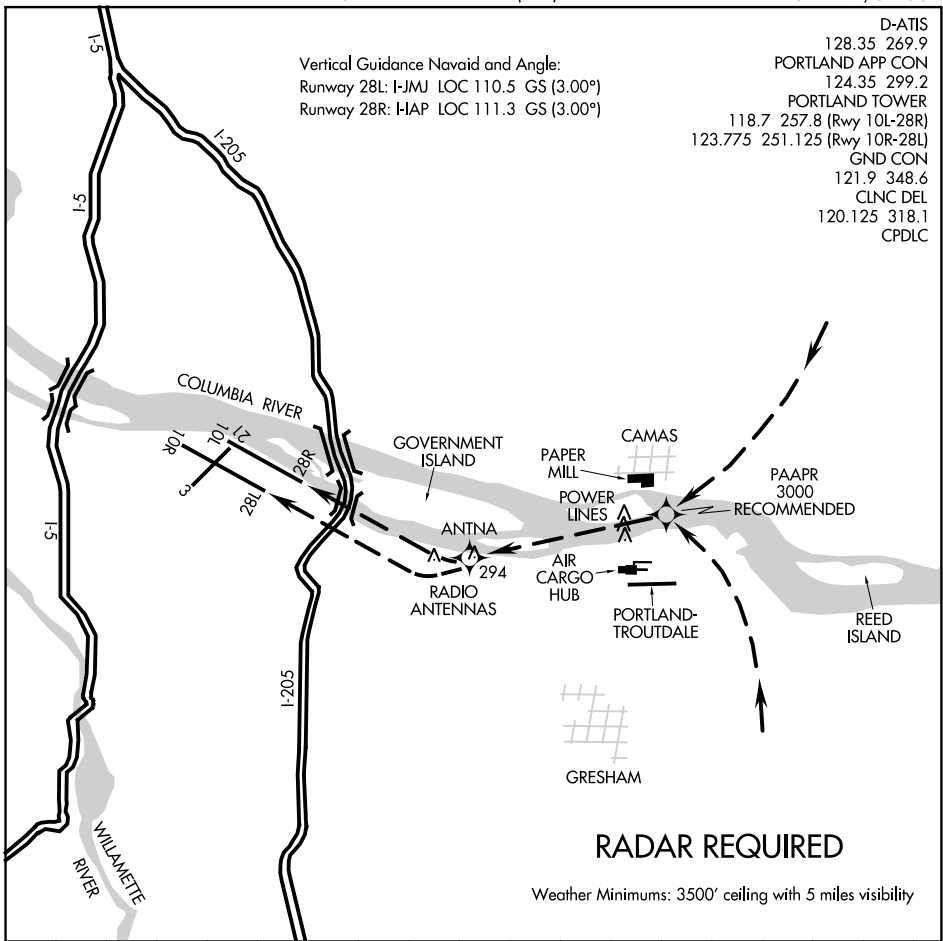
# MILL VISUAL RWY 28L/R

AL-330 (FAA)

PORTLAND INTL (PDX)  
PORTLAND, OREGON

Vertical Guidance Navaid and Angle:  
Runway 28L: I-JMJ LOC 110.5 GS (3.00°)  
Runway 28R: I-IAP LOC 111.3 GS (3.00°)

D-ATIS  
128.35 269.9  
PORTLAND APP CON  
124.35 299.2  
PORTLAND TOWER  
118.7 257.8 (Rwy 10L-28R)  
123.775 251.125 (Rwy 10R-28L)  
GND CON  
121.9 348.6  
CLNC DEL  
120.125 318.1  
CPDLC



NW-1, 26 DEC 2024 to 23 JAN 2025

NW-1, 26 DEC 2024 to 23 JAN 2025

1	2	3	4	5	6	7	8	9	10	11	12	13	14	15	16	17	18
---	---	---	---	---	---	---	---	---	----	----	----	----	----	----	----	----	----

## MILL VISUAL RWY 28L/R PROCEDURE NOT AUTHORIZED AT NIGHT

Aircraft cleared for the Mill Visual Approach should proceed over the Columbia River between the Paper Mill and the Air Cargo Hub, then via the depicted route to intercept the final approach course for the assigned runway.

# MILL VISUAL RWY 28L/R

Amdt 2 02MAY13

45°35'N-122°36'W

PORTLAND, OREGON  
PORTLAND INTL (PDX)