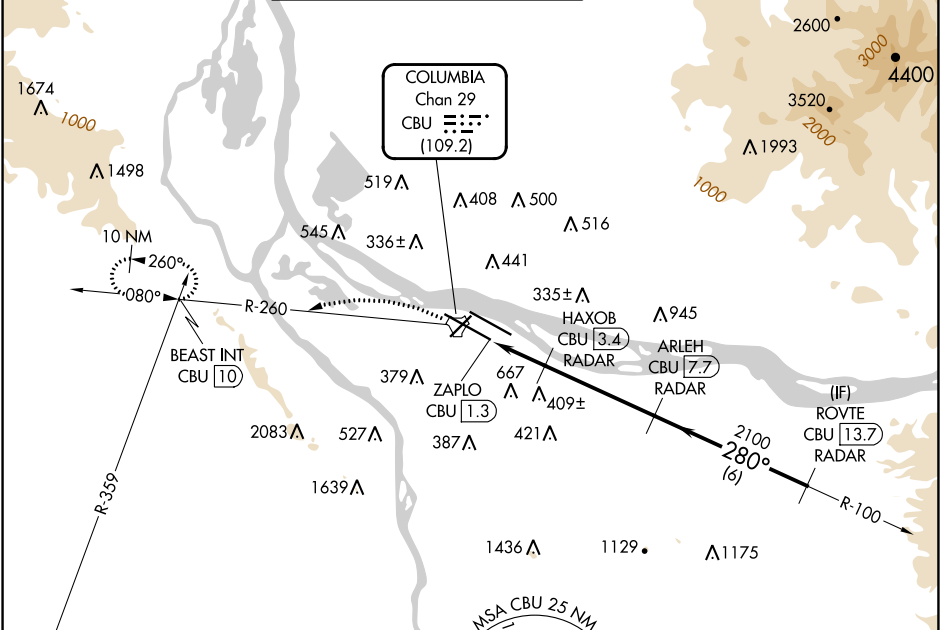


TACAN CBU Chan 29 (109.2)	APP CRS 280°	Rwy ldg TDZE 23 Apt Elev 31
---	------------------------	---

TACAN RWY 28L

PORTLAND INTL (PDX)

RADAR required for procedure entry.		MALS R	MISSED APPROACH: Climbing left turn to 4000 on CBU TACAN R-260 to BEAST INT/ CBU 10 DME and hold, continue climb-in-hold to 4000.		
For inop ALS, increase S-28L Cat C/D/E visibility to 1 3/4 SM.			GND CON 121.9 348.6	CLNC DEL 120.125 318.1	CPDLC
D-ATIS 128.35 269.9	PORTLAND APP CON 124.35 299.2	PORTLAND TOWER Rwy 10L-28R 118.7 257.8 Rwys 3-21, 10R-28L 123.775 251.125			



NW-1, 26 DEC 2024 to 23 JAN 2025

NW-1, 26 DEC 2024 to 23 JAN 2025

