

(TMBRS.TMBRS3) 24305

TMBRS THREE ARRIVAL (RNAV) Arrival Routes

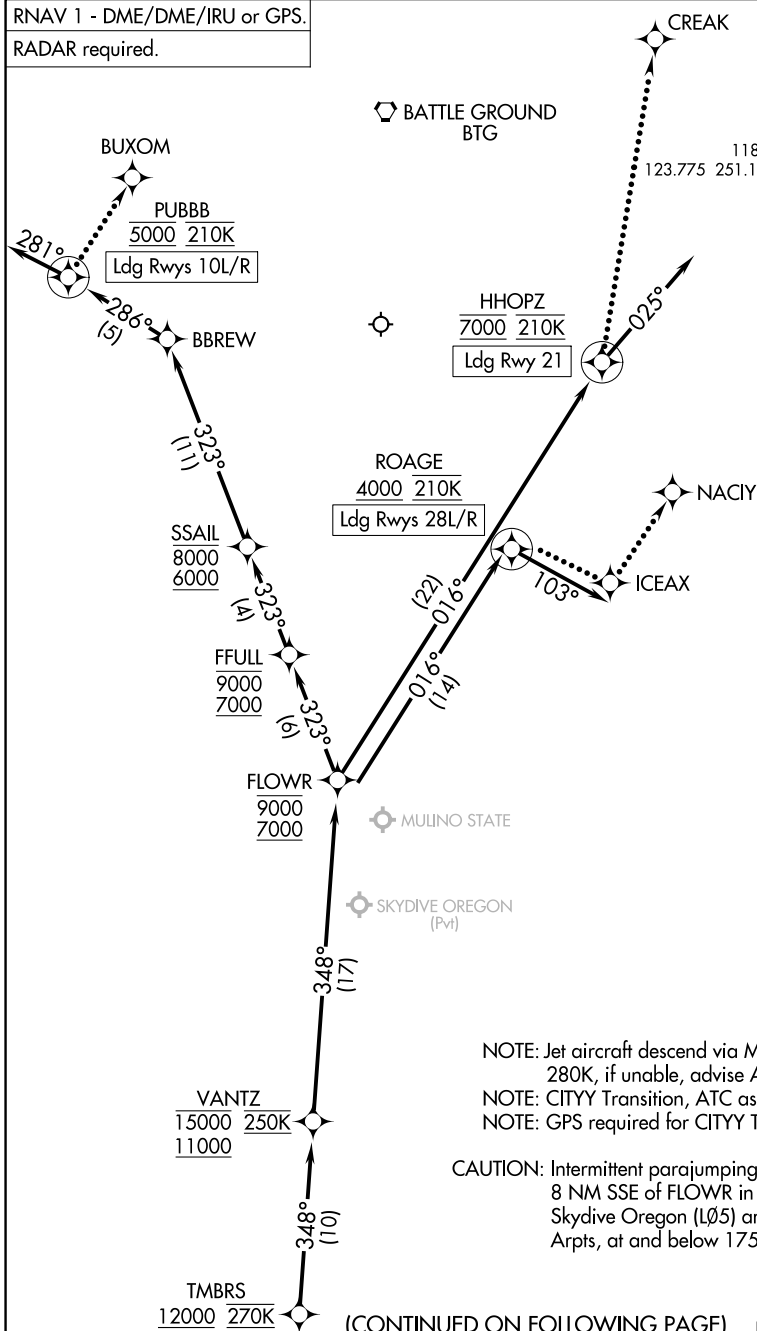
AL-330 (FAA)

PORTLAND INTL (PDX)

PORTLAND, OREGON

RNAV 1 - DME/DME/IRU or GPS.
RADAR required.

PORTLAND APP CON
124.35 299.2
D-ATIS
128.35 269.9
GND CON
121.9 348.6
PORTLAND TOWER
118.7 257.8 (Rwy 10L-28R)
123.775 251.125 (Rwys 3-21, 10R-28L)



NOTE: Jet aircraft descend via Mach number until 280K, if unable, advise ATC.

NOTE: CITYY Transition, ATC assigned only.

NOTE: GPS required for CITYY Transition.

CAUTION: Intermittent parajumping activity within 8 NM SSE of FLOWR in the vicinity of Skydive Oregon (LØ5) and Mulino (459) Arpts, at and below 17500.

(CONTINUED ON FOLLOWING PAGE)

NOTE: Chart not to scale.

NW-1, 26 DEC 2024 to 23 JAN 2025

NW-1, 26 DEC 2024 to 23 JAN 2025

TMBRS THREE ARRIVAL (RNAV) Arrival Routes

(TMBRS.TMBRS3) 31OCT24

PORTLAND, OREGON
PORTLAND INTL (PDX)