

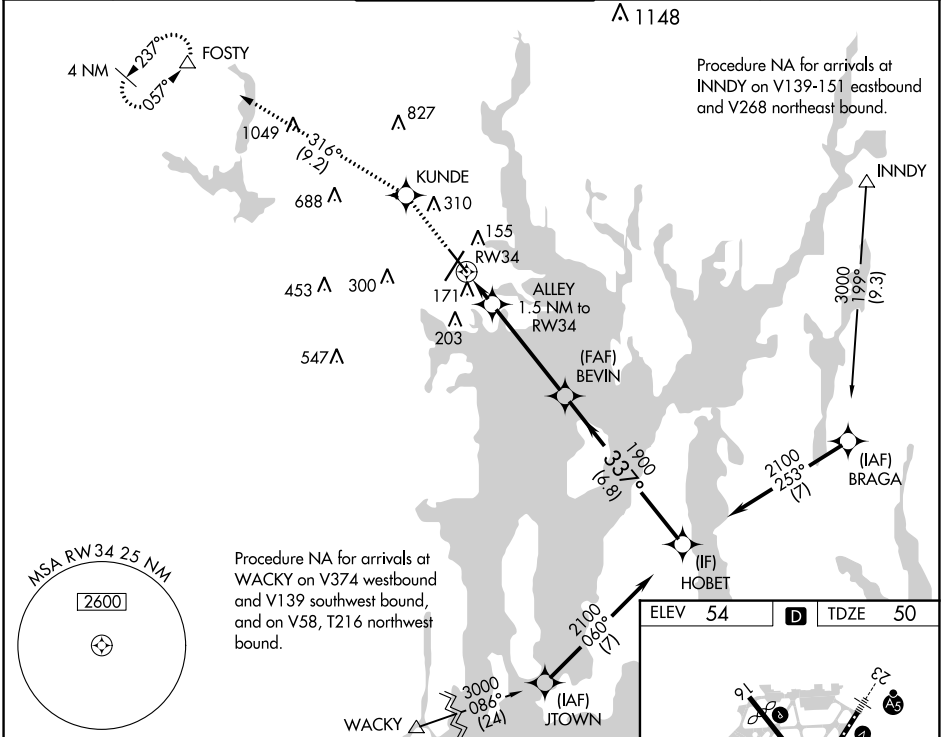
WAAS CH <b>58023</b> <b>W34A</b>	APP CRS <b>337°</b>	Rwy Idg TDZE Apt Elev	<b>6081</b> <b>50</b> <b>54</b>
--	------------------------	-----------------------------	---------------------------------------

# RNAV (GPS) RWY 34

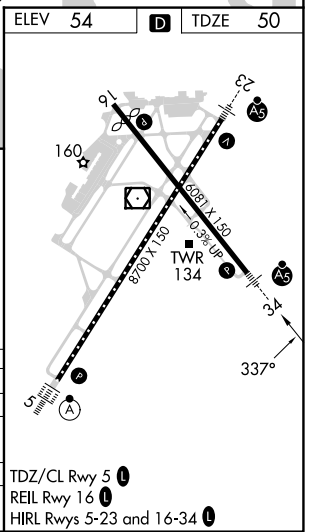
RHODE ISLAND TF GREEN INTL (PVD)

RNP APCH ▼ ▲ For uncompensated Baro-VNAV systems, LNAV/VNAV NA below -16°C or above 54°C. For inop MALS, increase LNAV/VNAV all Cats visibility to RVR 5000. For inop MALS, increase LNAV Cat A/B visibility to RVR 5500, and Cat C/D visibility to RVR 6000. Rwy 34 helicopter visibility reduction below RVR 4000 NA.	MALS AS	MISSED APPROACH: Climb to 2500 direct KUNDE and on track 316° to FOSTY and hold.
---	------------	---

D-ATIS <b>124.2</b>	PROVIDENCE APP CON * <b>123.675 244.875</b>	PROVIDENCE TOWER * <b>120.7 (CTAF) 0 257.8</b>	GND CON <b>121.9 348.6</b>	CLNC DEL <b>126.65 348.6</b>
------------------------	--	---	-------------------------------	---------------------------------



2500	KUNDE	FOSTY	VGSi and RNAV glidepath not coincident (VGSi Angle 3.00/TCH 60.)	
↑	◆	△	BEVIN	HOBET
	tr 316°		1900	2100
*LNAV only.	ALLEY 1.5 NM to RW34		337°	GP 3.00°
	RW34		1900	TCH 53
	*560		1.5 NM	4.2 NM
			6.8 NM	



CATEGORY	A	B	C	D
LPV DA		330/40	280 (300-¾)	
LNAV/VNAV DA		349/40	299 (300-¾)	
LNAV MDA		440/40	390 (400-¾)	
CIRCLING	560-1 506 (600-1)	640-1 586 (600-1)	640-1½ 586 (600-1½)	860-2½ 806 (900-2½)

TDZ/CL Rwy 5  
REIL Rwy 16  
HIRL Rws 5-23 and 16-34

NE-1, 26 DEC 2024 to 23 JAN 2025

NE-1, 26 DEC 2024 to 23 JAN 2025