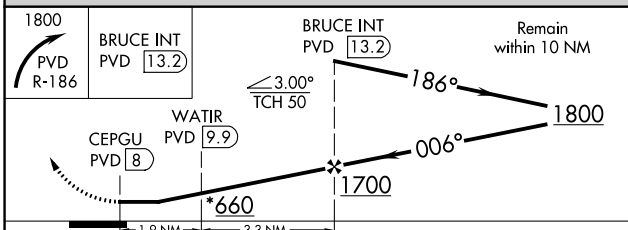
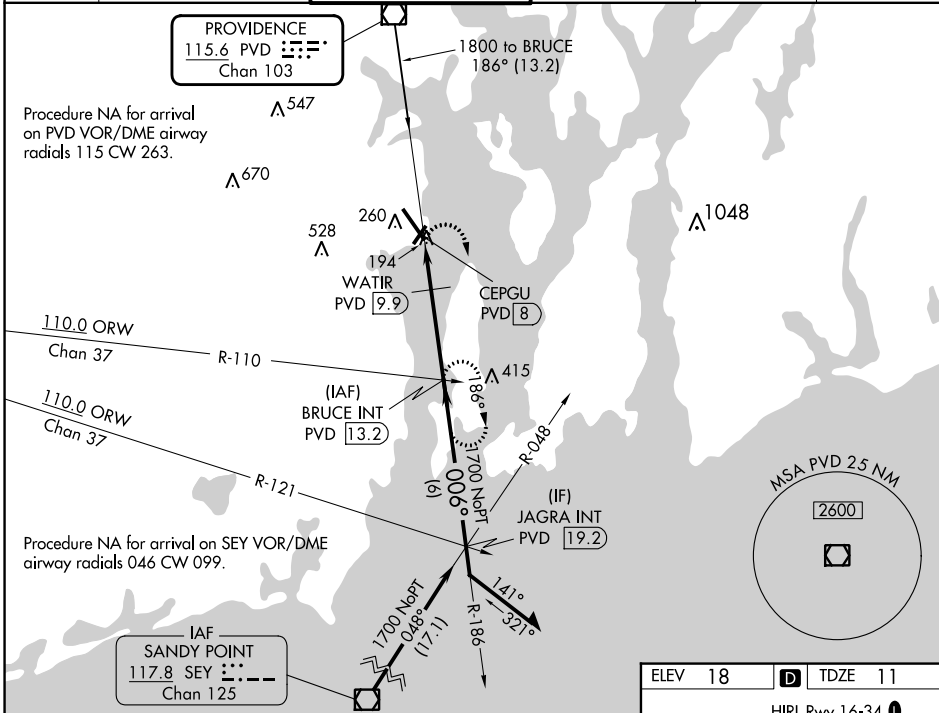


VOR/DME PVD 115.6 Chan 103	APP CRS 006°	Rwy Idg TDZE Apt Elev 7100 11 18
--	------------------------	--

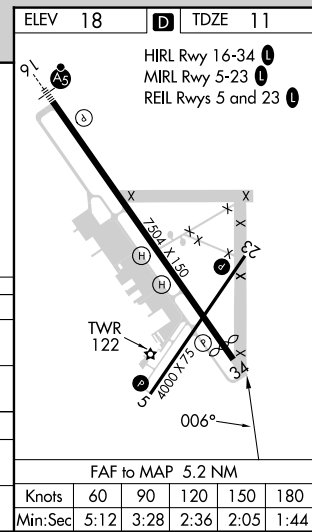
VOR RWY 34

QUONSET STATE (OQU)

<p>▼ Circling Rwy 5 NA at night. Rwy 34 helicopter visibility reduction below 1 SM NA.</p>		<p>MISSED APPROACH: Climbing right turn to 1800 on PVD VOR/DME R-186 to BRUCE INT/PVD 13.2 DME and hold.</p>			
ATIS ★ 118.6	PROVIDENCE APP CON ★ 123.675 244.875	QUONSET TOWER ★ 126.35 (CTAF) 0 252.9	GND CON 134.5 226.675	CLNC DEL 134.5	UNICOM 122.95



CATEGORY	A	B	C	D
S-34	660-1 649 (700-1)		660-1 $\frac{7}{8}$ 649 (700-1 $\frac{7}{8}$)	
C CIRCLING	660-1 642 (700-1)		660-1 $\frac{7}{8}$ 642 (700-1 $\frac{7}{8}$)	880-2 $\frac{3}{4}$ 862 (900-2 $\frac{3}{4}$)
WATR FIX MINIMUMS (DME REQUIRED)				
S-34	580-1 569 (600-1)		580-1 $\frac{5}{8}$ 569 (600-1 $\frac{5}{8}$)	
C CIRCLING	620-1 602 (700-1)		620-1 $\frac{3}{4}$ 602 (700-1 $\frac{3}{4}$)	880-2 $\frac{3}{4}$ 862 (900-2 $\frac{3}{4}$)



NE-1, 26 DEC 2024 to 23 JAN 2025

NE-1, 26 DEC 2024 to 23 JAN 2025