

QUANTICO, VIRGINIA

# ILS or LOC/DME RWY 2

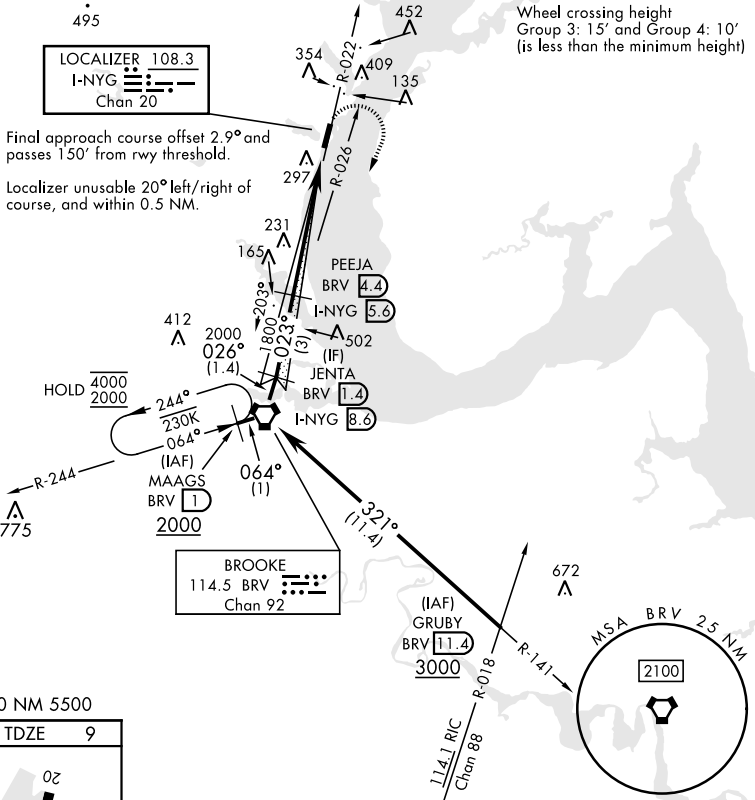
LOC/DME I-NYG <b>108.3</b> Chan <b>20</b>	APCH CRS <b>023°</b>	Rwy Idg TDZE Arprt Elev <b>4250</b> <b>9</b> <b>10</b>
---	-------------------------	---

AL-339 [USN]

QUANTICO MCAF (TURNER FLD) (KNYG)

TACAN required. * Circling not authorized W of Rwy 2-20.	MISSED APPROACH: Climbing right turn to 2000 direct BRV VORTAC, then via BRV R-244 to MAGGS and hold.
---	---

ATIS ★ <b>263.15</b>	POTOMAC APP/DEP CON <b>128.525 306.925</b>	TOWER ★ <b>118.6 (CTAF) 0 360.2</b>	GND CON <b>121.75 340.2</b>	ASR/PAR
-------------------------	---	--	--------------------------------	---------



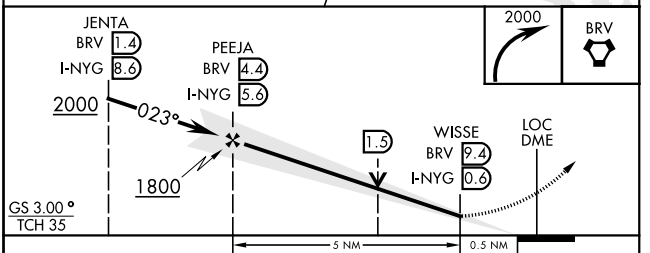
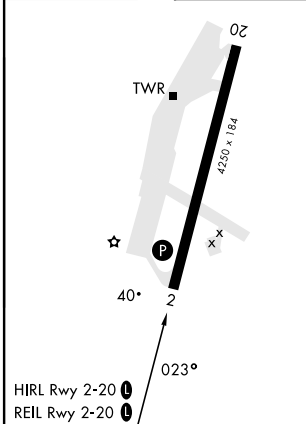
Wheel crossing height  
Group 3: 15' and Group 4: 10'  
(is less than the minimum height)

Final approach course offset 2.9° and passes 150' from rwy threshold.

Locator unusable 20° left/right of course, and within 0.5 NM.

EMERG SAFE ALT 100 NM 5500

ELEV 10	TDZE 9
---------	--------



CATEGORY	A	B	C	D
S-ILS 2	259-¾	250	(300-¾)	
S-LOC 2	500-1	491 (500-1)	500-1¾	491 (500-1¾)
CIRCLING*	500-1 490 (500-1)	680-1 670 (700-1)	760-2¼ 750 (800-2¼)	800-2½ 790 (800-2½)

QUANTICO, VIRGINIA

38°30'N-77°18'W

QUANTICO MCAF (TURNER FLD) (KNYG)

Amtd 1 29DEC22

# ILS or LOC/DME RWY 2

NE-3, 26 DEC 2024 to 23 JAN 2025

NE-3, 26 DEC 2024 to 23 JAN 2025