

QUANTICO, VIRGINIA

TACAN RWY 2

BRV VORTAC 114.5 Chan 92	APCH CRS 022°	Rwy Idg TDZE Arprt Elev 4250 9 10
--	-------------------------	---

AL-339 [USN]

QUANTICO MCAF (TURNER FLD) (KNYG)

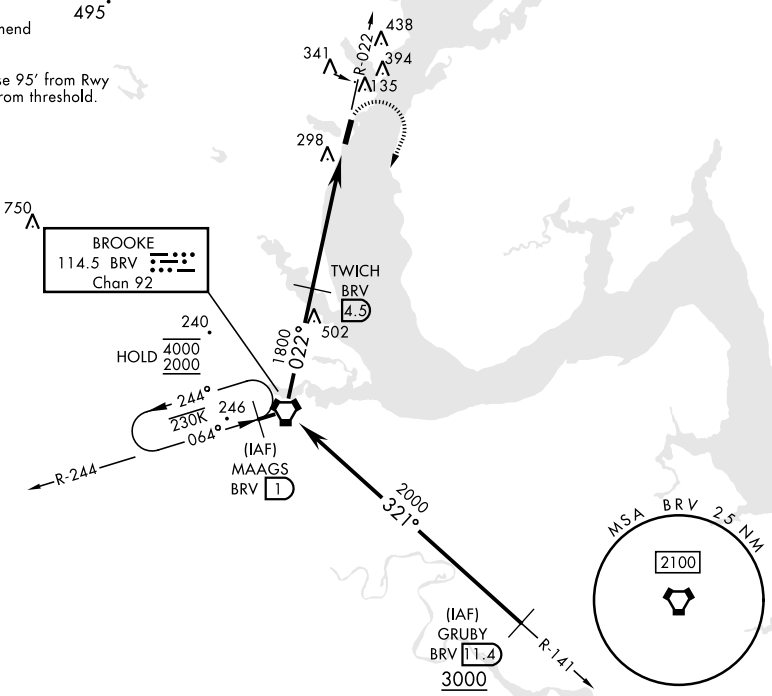
▽ * Circling not authorized W of Rwy 2-20.

MISSED APPROACH: Climbing right turn to 2000 direct BRV VORTAC, then via BRV R-244 to MAAGS and hold.

ATIS ★ 263.15	POTOMAC APP/DEP CON 128.525 306.925	TOWER ★ 118.6 (CTAF) 0 360.2	GND CON 121.75 340.2	ASR/PAR
-------------------------	---	--	--------------------------------	---------

CAUTION: Short intermediate, recommend early configuration.

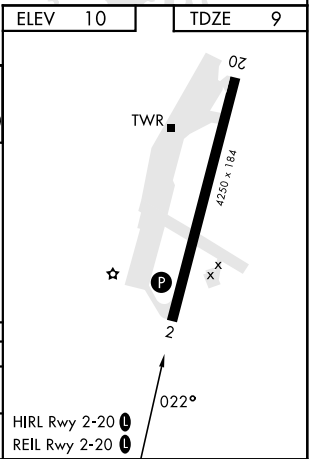
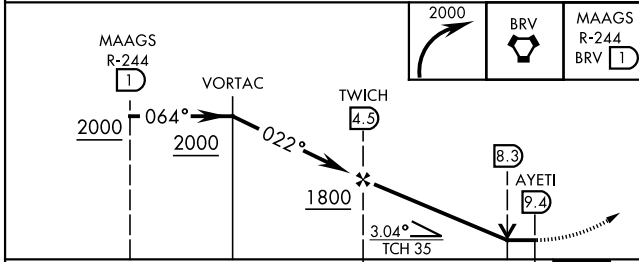
Final approach course 95° from Rwy centerline at 3000' from threshold.



NE-3, 26 DEC 2024 to 23 JAN 2025

NE-3, 26 DEC 2024 to 23 JAN 2025

EMERG SAFE ALT 100 NM 5500	ELEV 10	TDZE 9
----------------------------	---------	--------



CATEGORY	A	B	C	D
S-2	560-1	551 (600-1)	560-1½	551 (600-1½)
C CIRCLING*	560-1 550 (600-1)	660-1 650 (700-1)	700-2 690 (700-2)	740-2¼ 730 (800-2¼)

HIRL Rwy 2-20 0

REIL Rwy 2-20 0

QUANTICO, VIRGINIA
Amdt 4 10AUG23

38°30'N-77°18'W

QUANTICO MCAF (TURNER FLD) (KNYG)

TACAN RWY 2