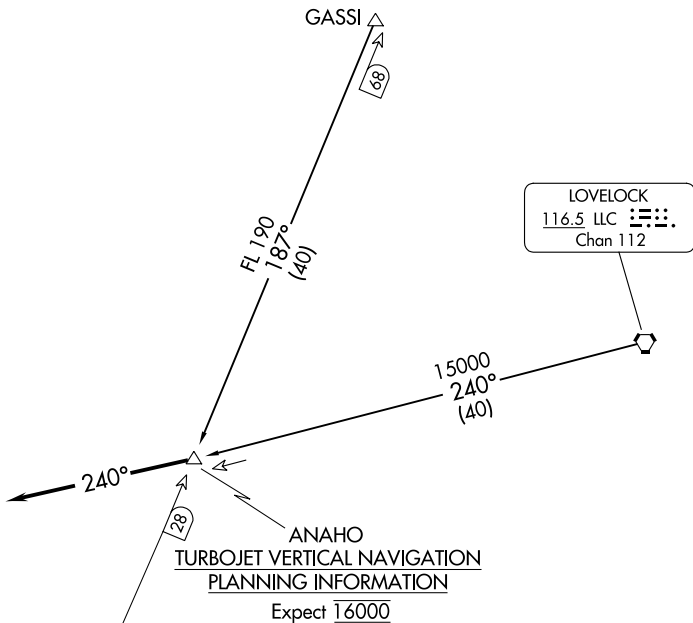


(ANAHO.ANAHO2) 24081  
**ANAHO TWO ARRIVAL**

AL-346 (FAA)

RENO/TAHOE INTL (RNO)  
 RENO, NEVADA

NORCAL APP CON  
 126.3 353.9  
 D-ATIS  
 135.8 363.0



CAUTION: Intense glider activity up to FL180.

NOTE: RADAR required.

NOTE: Chart not to scale.

**ARRIVAL ROUTE DESCRIPTION**

GASSI TRANSITION (GASSI.ANAHO2): From over GASSI via FMG R-007 to ANAHO INT/DME. Thence. . . .

LOVELOCK TRANSITION (LLC.ANAHO2): From over LLC VORTAC via LLC R-240 to ANAHO INT/DME. Thence. . . .

. . . .Depart ANAHO INT/DME heading 240° for vectors to final approach course.

**ANAHO TWO ARRIVAL**  
 (ANAHO.ANAHO2) 29FEB96

RENO, NEVADA  
 RENO/TAHOE INTL (RNO)

SW-4, 26 DEC 2024 to 23 JAN 2025

SW-4, 26 DEC 2024 to 23 JAN 2025