

LOC/DME I-AGY 109.9 Chan 36	APP CRS 347°	Rwy Idg 10011 TDZE 4410 Apt Elev 4415
---	------------------------	--

ILS or LOC RWY 35L

RENO/TAHOE INTL (RNO)

DME required.

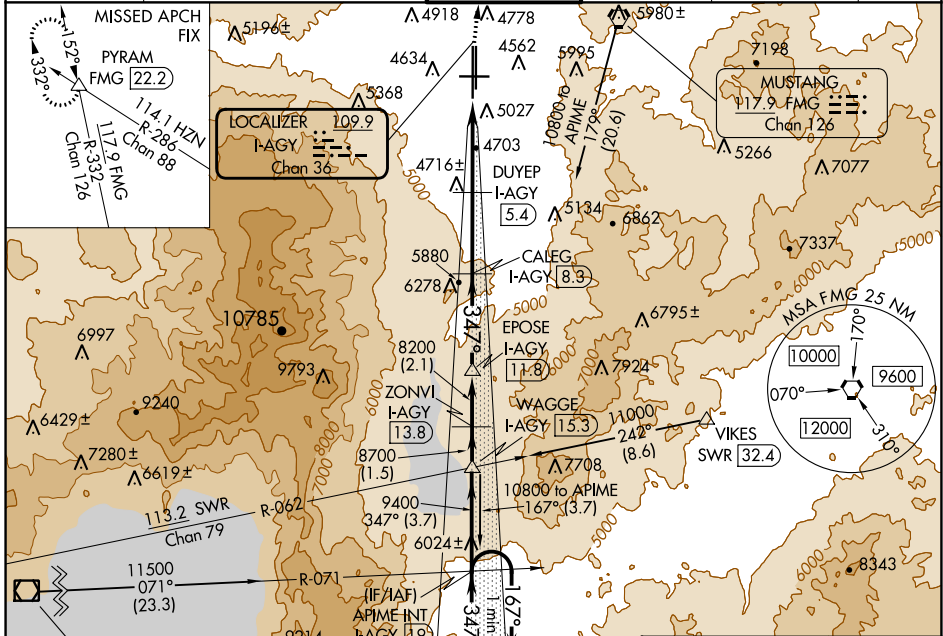
MALS/R

MISSED APPROACH: Climb to 11000 on heading 350° and on FMG VORTAC R-332 to PYRAM INT/FMG 22.2 DME and hold, continue climb-in-hold to 11000.

⚠ Circling Rwy 8 NA at night. Inop table does not apply.

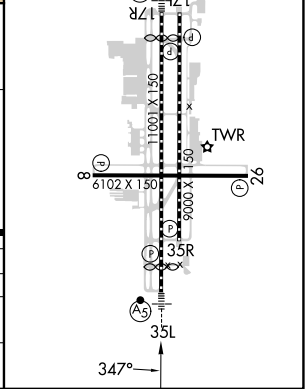
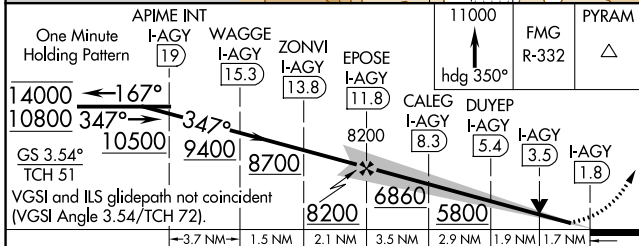
⚠ -13°C

D-ATIS 135.8 363.0	NORCAL APP CON 119.2 279.55 126.3 353.9	RENO TOWER 118.7 257.8	GND CON 121.9 348.6	CLNC DEL 124.9 370.85	CPDLC
------------------------------	---	----------------------------------	-------------------------------	---------------------------------	-------



ELEV 4415 TDZE 4410

HIRL Rwys 17R-35L and 17L-35R
REIL Rws 8, 17L, 26, and 35R
MIRL Rwy 8-26



APIME INT	One Minute Holding Pattern	WAGGE I-AGY 15.3	ZONVI I-AGY 13.8	EPOSE I-AGY 11.8	CALEG I-AGY 8.3	DUYEP I-AGY 5.4	FMG R-332	PYRAM
14000	10800	10500	9400	8700	8200	6860	5800	
GS 3.54° TCH 51		VGS1 and ILS glidepath not coincident (VGS1 Angle 3.54/TCH 72)						
	←3.7 NM→	1.5 NM	2.1 NM	3.5 NM	2.9 NM	1.9 NM	1.7 NM	
CATEGORY	A	B		C		D		
S-ILS 35L	5062-1½		652 (700-1½)				NA	
S-LOC 35L	5120-1	710 (800-1)		5120-2		710 (800-2)		NA
CIRCLING	5340-1¼	925 (1000-1¼)		6460-3		2045 (2100-3)		NA

SW-4, 26 DEC 2024 to 23 JAN 2025

SW-4, 26 DEC 2024 to 23 JAN 2025