

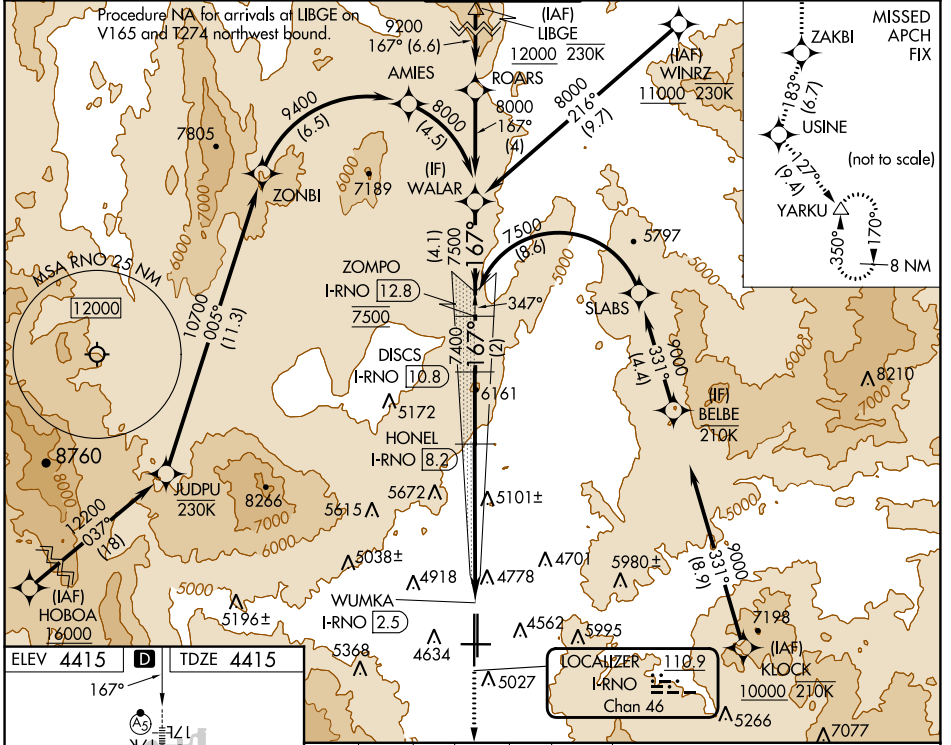
LOC/DME I-RNO 110.9 Chan 46	APP CRS 167°	Rwy Idg 10011 TDZE 4415 Apt Elev 4415
---	------------------------	--

ILS Z or LOC Z RWY 17R

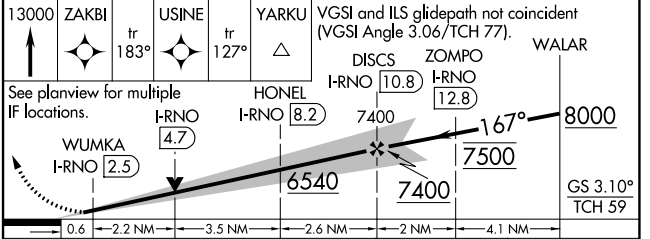
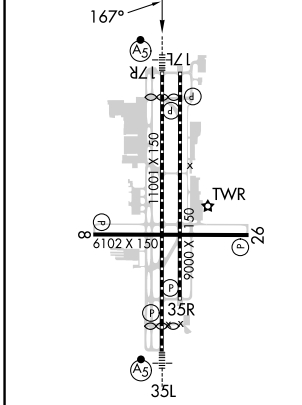
RENO/TAHOE INTL (RNO)

DME required. RNP APCH - GPS. From HOBOA or KLOCK: RF		MALS R	MISSED APPROACH: Climb to 13000 on the RNAV missed approach route to YARKU and hold, continue climb-in-hold to 13000. *Missed approach requires minimum climb of 390 feet per NM to 8000.
⚠ Circling Rwy 8 NA at night. # For inop ALS, increase S-ILS 17R all Cats visibility to 2 SM. ❄ -13°C *RVR 1800 authorized with use of FD or AP or HUD to DA.			

D-ATIS 135.8 363.0	NORCAL APP CON 119.2 279.55 126.3 353.9	RENO TOWER 118.7 257.8	GND CON 121.9 348.6	CLNC DEL 124.9 370.85	CPDLC
------------------------------	---	----------------------------------	-------------------------------	---------------------------------	-------



ELEV 4415	D	TDZE 4415
------------------	----------	------------------



CATEGORY	A	B	C	D
S-ILS 17R*		4615/24	200 (200-1/2)	
S-ILS 17R#		5138-1 5/8	723 (800-1%)	
S-LOC 17R	5420/40 1005 (1100-3/4)	5420/55 1005 (1100-1)	5420-2 1/2	1005 (1100-2 1/2)
C CIRCLING	5420-1 1/4 1005 (1100-1 1/4)	5420-1 1/2 1005 (1100-1 1/2)	6480-3	2065 (2100-3)

MIRL Rwy 8-26
REIL Rwy 8, 17L, 26, and 35R
HIRL Rwy 17R-35L and 17L-35R

SW-4, 26 DEC 2024 to 23 JAN 2025

SW-4, 26 DEC 2024 to 23 JAN 2025