

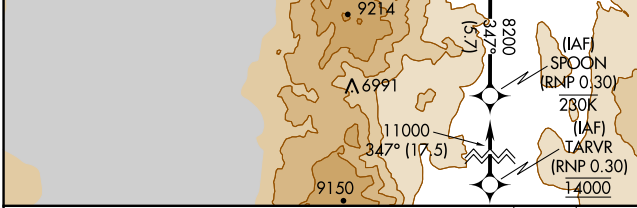
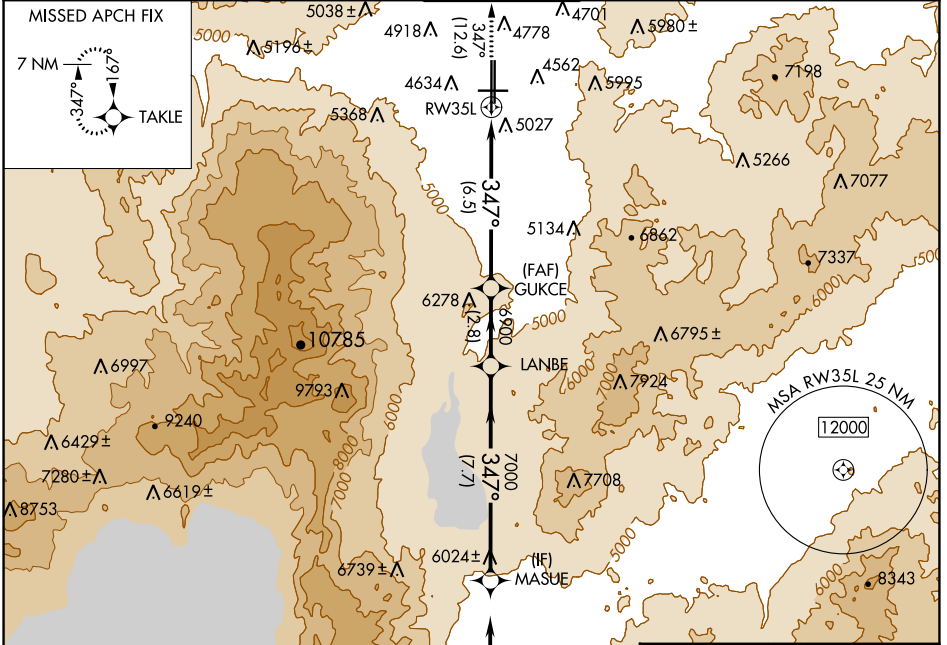
# RNAV (RNP) Z RWY 35L

RENO/TAHOE INTL (RNO)

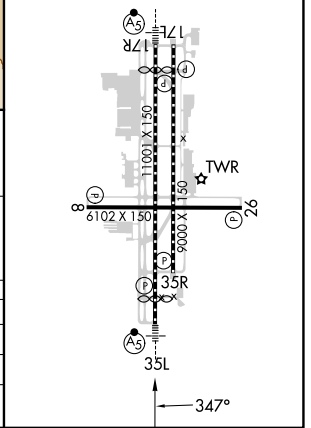
APP CRS	Rwy Idg	<b>10011</b>
<b>347°</b>	TDZE	<b>4410</b>
	Apt Elev	<b>4415</b>

RNP AR APCH - GPS.		MALSR	MISSED APPROACH: Climb to 11000 on track 347° to TAKLE and hold, continue climb-in-hold to 11000. *Missed approach requires minimum climb of 300 feet per NM to 7140.	
<p>For uncompensated Baro-VNAV systems, procedure NA below -9°C or above 35°C. -13°C</p>				

D-ATIS	NORCAL APP CON		RENO TOWER	GND CON	CLNC DEL	CPDLC
<b>135.8 363.0</b>	<b>119.2 279.55</b>	<b>126.3 353.9</b>	<b>118.7 257.8</b>	<b>121.9 348.6</b>	<b>124.9 370.85</b>	



ELEV 4415		TDZE 4410
REIL Rwy 8, 17L, 26, and 35R		
HIRL Rwy 17R-35L and 17L-35R		
MIRL Rwy 8-26		



MASUE	LANBE	GUKCE	11000	TAKLE
8200		6900		
GP 3.50°				
TCH 72				
	7.7 NM	2.8 NM	6.5 NM	

CATEGORY	A	B	C	D
RNP 0.10 DA*		4736-1/2	326 (400-1/2)	
RNP 0.30 DA		5349-2	939 (1000-2)	

## AUTHORIZATION REQUIRED

SW-4, 26 DEC 2024 to 23 JAN 2025

SW-4, 26 DEC 2024 to 23 JAN 2025