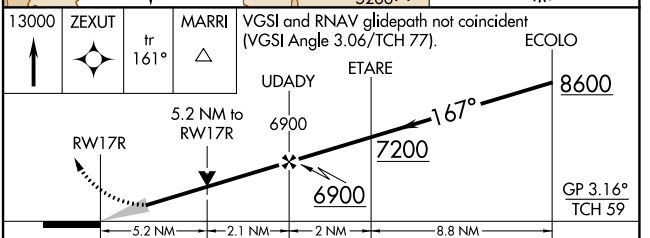
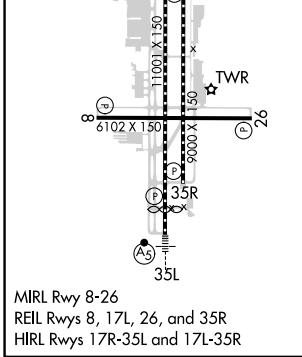
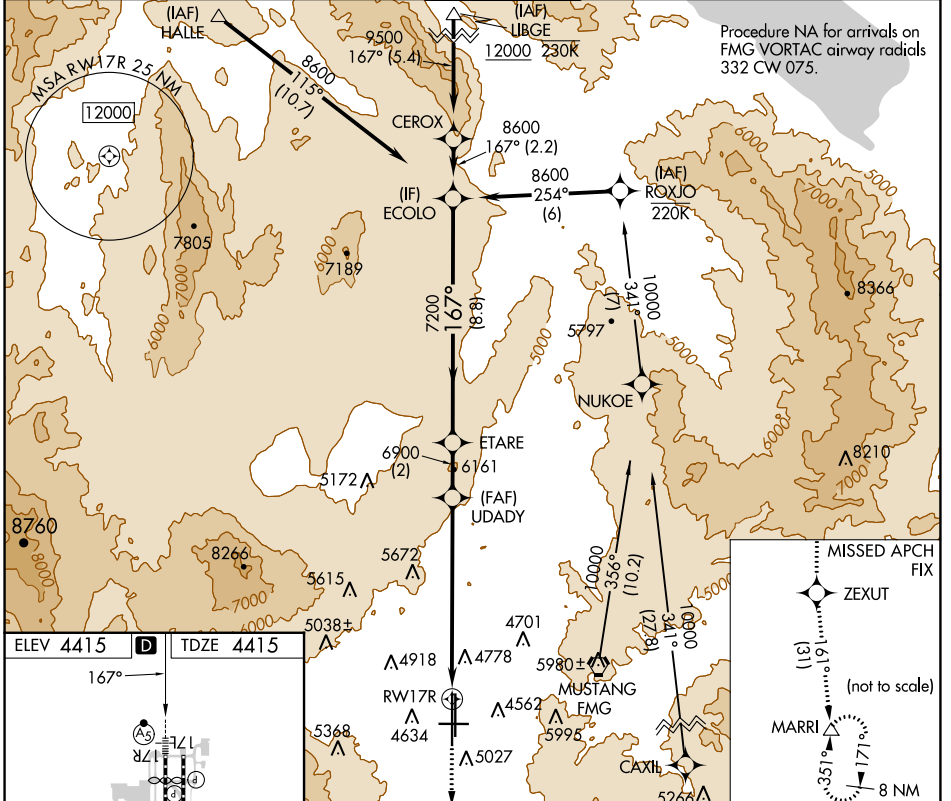


WAAS CH <b>78309</b> <b>W17B</b>	APP CRS <b>167°</b>	Rwy Idg <b>10001</b> TDZE <b>4415</b> Apt Elev <b>4415</b>
--	------------------------	--

# RNAV (GPS) X RWY 17R

RENO/TAHOE INTL (RNO)

RNP APCH - GPS.		MALSR		MISSED APPROACH: Climb to 13000 direct ZEXUT and on track 161° to MARRI and hold.	
<p>▼ For inop ALS, increase LPV all Cats visibility to 2 1/2 SM.          ▲ Inop table does not apply to LNAV all Cats.</p>					
D-ATIS <b>135.8 363.0</b>		NORCAL APP CON <b>119.2 279.55 126.3 353.9</b>		RENO TOWER <b>118.7 257.8</b>	GND CON <b>121.9 348.6</b>
				CLNC DEL <b>124.9 370.85</b>	CPDLC



13000	ZEXUT	MARRI	VGSI and RNAV glidepath not coincident (VGSI Angle 3.06/TCH 77).	
↑	✧	△	UDADY	ETARE
	tr 161°			ECOLO
				8600
				GP 3.16°
				TCH 59
CATEGORY	A	B	C	D
LPV DA	5239-1 7/8 824 (900-1%)			
LNAV MDA	6200/40 1785 (1800-3/4)	6200/55 1785 (1800-1)	6200-3	1785 (1800-3)

SW-4, 26 DEC 2024 to 23 JAN 2025

SW-4, 26 DEC 2024 to 23 JAN 2025