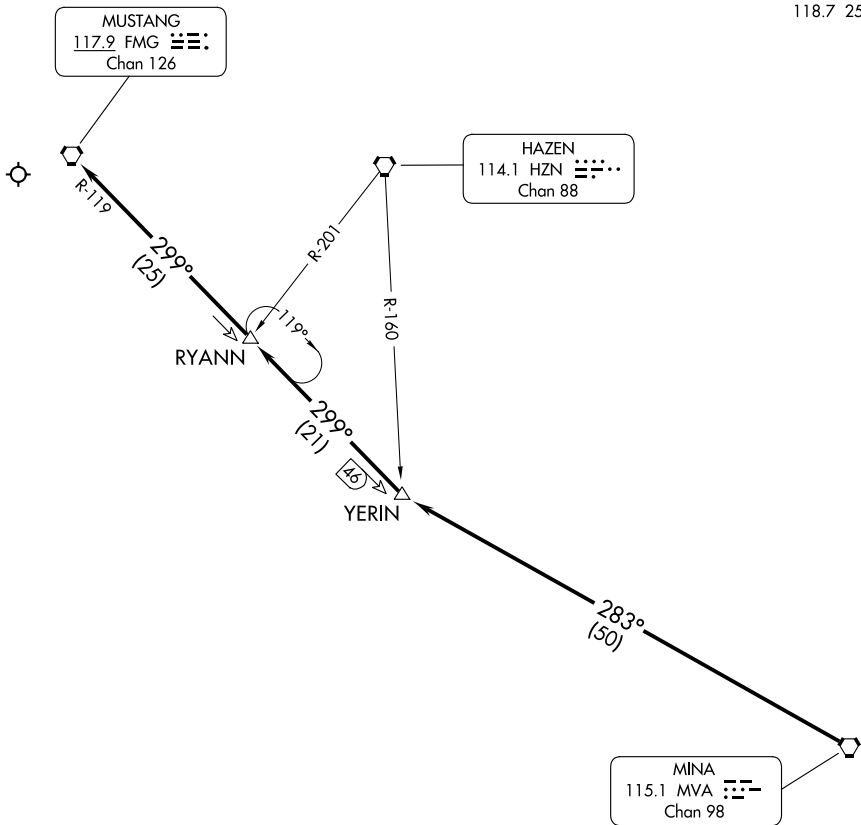


NORCAL APP CON
 119.2 279.55
 D-ATIS
 135.8 363.0
 RENO TOWER
 118.7 257.8



SW-4, 26 DEC 2024 to 23 JAN 2025

SW-4, 26 DEC 2024 to 23 JAN 2025

CAUTION: Intense glider activity to FL180.

NOTE: Runways 17L/R only.

NOTE: RADAR required.

NOTE: Chart not to scale.

ARRIVAL ROUTE DESCRIPTION

RUNWAYS 17L/R: From over MVA VORTAC on MVA R-283 to YERIN, thence on FMG R-119 to FMG VORTAC. Expect RADAR vectors to Runways 17L/R.