

VORTAC FMG 117.9 Chan 126	APP CRS 239°	Rwy Idg TDZE Apt Elev N/A N/A 4415
---	------------------------	--

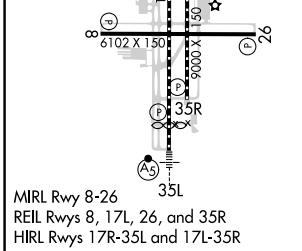
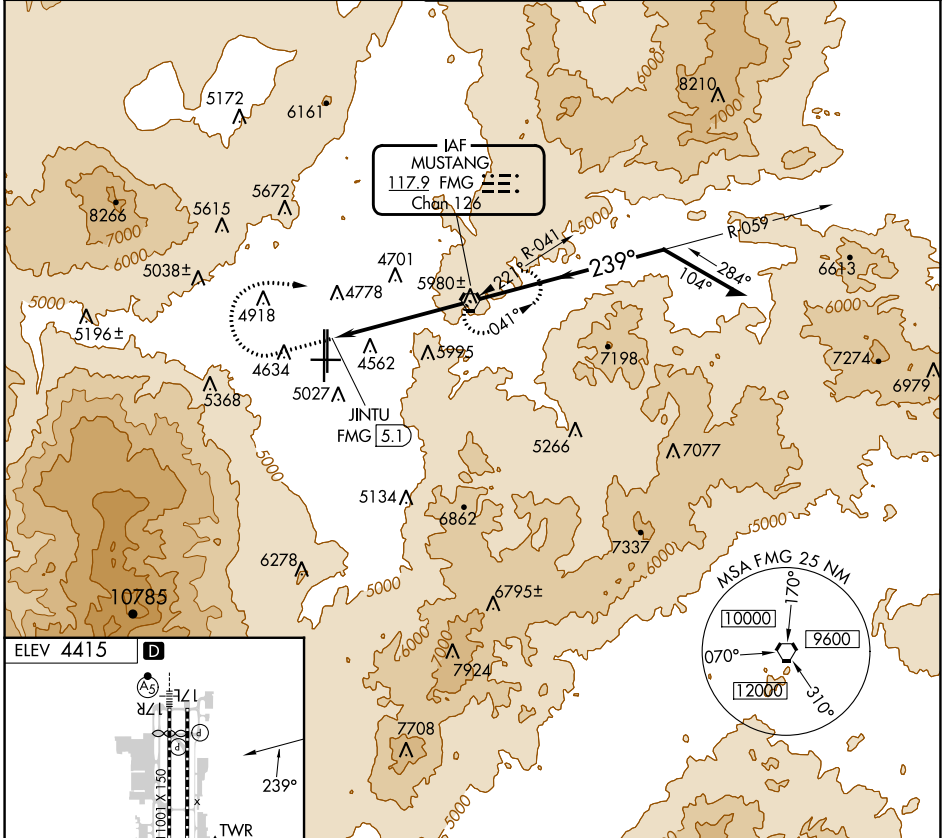
VOR-D

RENO/TAHOE INTL (RNO)

⚠ Circling Rwy 8 NA at night.
⚠ -13°C

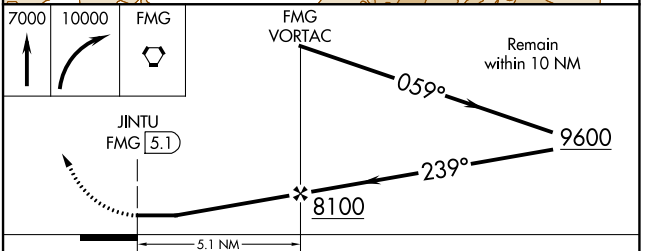
MISSED APPROACH: Climb to 7000 then climbing right turn to 10000 direct FMG VORTAC and hold, continue climb-in-hold to 10000.

D-ATIS 135.8 363.0	NORCAL APP CON 119.2 279.55 126.3 353.9	RENO TOWER 118.7 257.8	GND CON 121.9 348.6	CLNC DEL 124.9 370.85	CPDLC
------------------------------	---	---	-------------------------------	---------------------------------	-------



MIRL Rwy 8-26
REIL Rws 8, 17L, 26, and 35R
HIRL Rws 17R-35L and 17L-35R

FAF to MAP 5.1 NM					
Knots	60	90	120	150	180
Min:Sec	5:06	3:24	2:33	2:02	1:42



CATEGORY	A	B	C	D
ⓐ CIRCLING	6300-1¼ 1885 (1900-1¼)	6300-1½ 1885 (1900-1½)	6460-3	2045 (2100-3)

SW-4, 26 DEC 2024 to 23 JAN 2025

SW-4, 26 DEC 2024 to 23 JAN 2025