

# ILS or LOC X RWY 32

LOC I-RIV <b>110.1</b>	APCH CRS <b>315°</b>	Rwy Idg <b>13,302</b> TDZE <b>1497</b> Arpt Elev <b>1536</b>
---------------------------	-------------------------	--

AL-348 [USAF]

MARCH ARB (KRIV)

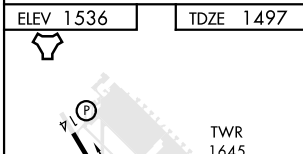
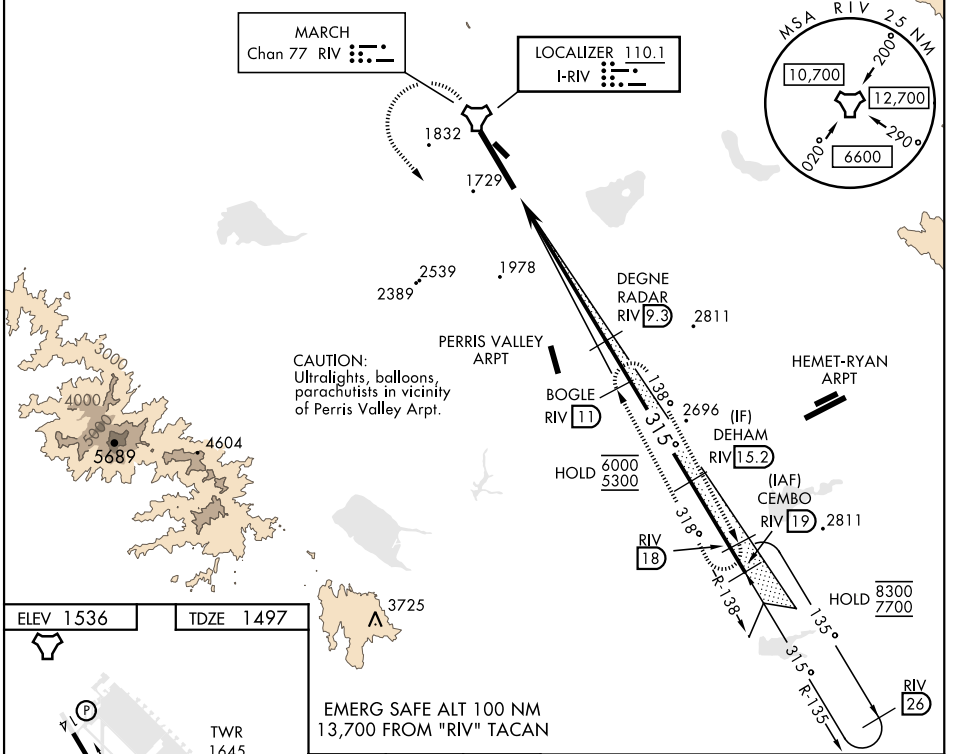
▼ \*When ALS inop, increase RVR to 40 and vis to ¾ mile.  
 \*\*When ALS inop, increase CAT AB RVR to 55 and vis to 1 mile and CAT CDE RVR to 60 and vis to 1½ miles.



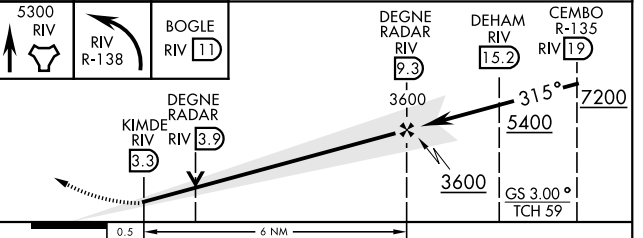
† MISSED APPROACH: Climb to 5300 direct RIV TACAN, then turn left to intercept RIV R-138 direct BOGLE, continue climb in hold to 5300.

ATIS <b>134.75 239.05</b>	APP/DEP CON ★ <b>133.5 306.975</b>	TOWER <b>127.65 253.5</b>	GND CON <b>121.75 335.8</b>	CLNC DEL <b>127.775 268.7</b>
------------------------------	---------------------------------------	------------------------------	--------------------------------	----------------------------------

\*\*\* Circling not authorized NE of Rwy 14-32. Rapid rising terrain. † Missed approach requires use of RNAV or ATC monitoring.



EMERG SAFE ALT 100 NM  
13,700 FROM "RIV" TACAN



CATEGORY	A	B	C	D	E
S-ILS 32 *	1697/24		200	(200-½)	
S-LOC 32 **	1900/24	403 (400-½)	1900/40	403 (400-¾)	
<b>CIRCLING</b> ***	2180-1 644 (700-1)	2260-1 724 (800-1)	2300-2¼ 764 (800-2¼)	2440-3 904 (1000-3)	2840-3 1304 (1400-3)

# ILS or LOC X RWY 32

SW-3, 26 DEC 2024 to 23 JAN 2025

SW-3, 26 DEC 2024 to 23 JAN 2025