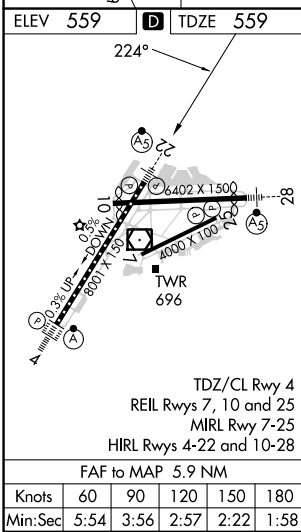
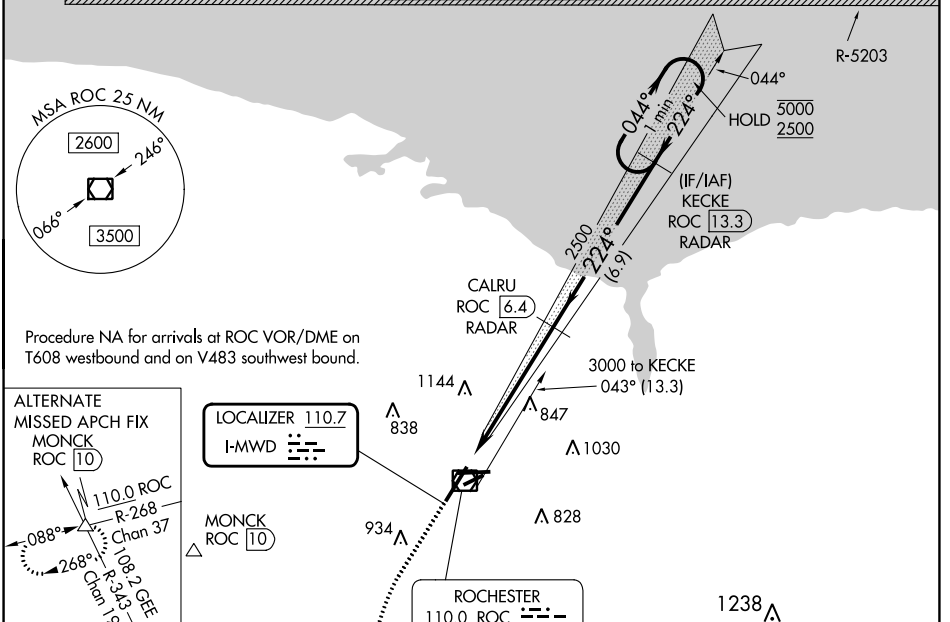


| | | |
|---------------------------|------------------------|------------------------|
| LOC I-MWD 110.7 | APP CRS 224° | Rwy Idg 8001 |
| | | TDZE 559 |
| | | Apt Elev 559 |

ILS or LOC RWY 22

FREDERICK DOUGLASS/GREATER ROCHESTER INTL (ROC)

| | | | | | |
|---|--|---------------------------------------|-------------------------|---|--|
| DME or RADAR required. | | MALSR | | MISSED APPROACH: Climb to 1000 then climbing left turn to 4000 direct GEE VOR/DME and hold. | |
| <p>▼ When R-5203 active hold in lieu NA. DME from ROC VOR/DME.</p> <p>▲ DME use requires simultaneous reception of I-MWD and ROC DME.</p> <p>* RVR 1800 authorized with use of FD or AP or HUD to DA.</p> | | | | | |
| ATIS 124.825 | ROCHESTER APP CON 119.55 269.6 | ROCHESTER TOWER 118.3 254.3 | GND CON 121.7 | CLNC DEL 118.8 343.65 | |



| | | | | | |
|------------|--------------------|---|--------------------------|------------------------|----------------------------|
| 1000 | 4000 | GEE | CALRU ROC 6.4 RADAR | KECKE ROC 13.3 RADAR | One Minute Holding Pattern |
| ROC 1.5 | | 2500 | 224° | 044° 5000 | 2500 |
| | | 2500 | 224° | GS 3.00° | TCH 50 |
| | | VGSI and ILS glidepath not coincident (VGSI Angle 3.00/TCH 67). | | | |
| | | 1.1 NM | 4.8 NM | 6.9 NM | |
| CATEGORY | A | B | C | D | |
| S-ILS 22 * | 759/24 200 (200-½) | | | | |
| S-LOC 22 | 980/24 | 421 (500-½) | 980/40 | 421 (500-¾) | |
| CIRCLING | 1060-1 | 501 (600-1) | 1460-2¾ 901 (1000-2¾) | 1460-3 901 (1000-3) | |

NE-2, 26 DEC 2024 to 23 JAN 2025

NE-2, 26 DEC 2024 to 23 JAN 2025