

LOC/DME I-ROW 109.9 Chan 36	APP CRS 215°	Rwy Idg 13000 TDZE 3633 Apt Elev 3671
--	------------------------	--

ILS Z or LOC Z RWY 21

ROSWELL AIR CENTER (ROW)

ADF or DME required.

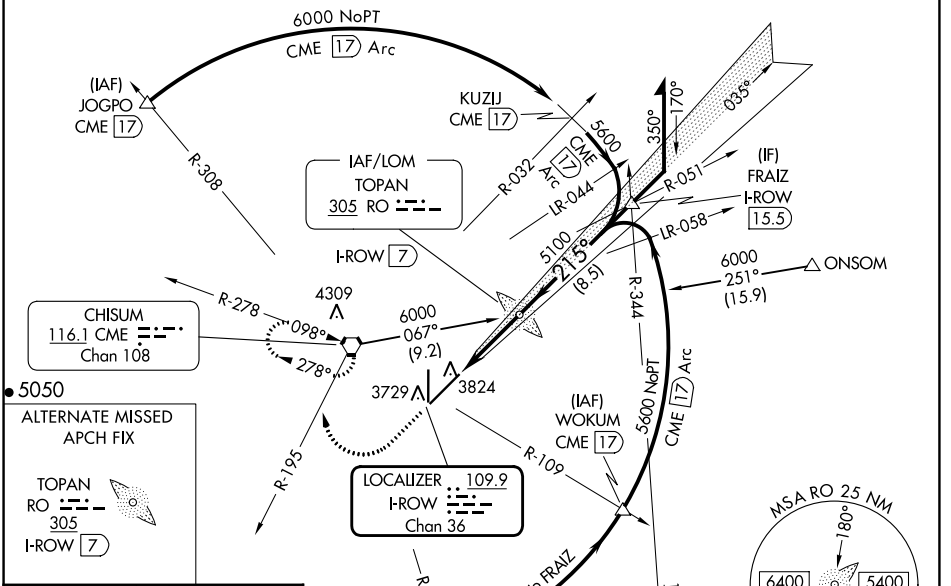
V VDP NA when using Artesia altimeter setting. When local altimeter setting not received, use Artesia altimeter setting: increase DA to 3913 feet; increase all MDAs 80 feet and S-LOC 21 visibility Cat C/D 3/8 SM and Circling visibility Cat D 1/4 SM. For inop ALS when using Artesia altimeter setting, increase ILS all Cats visibility to 3/8 SM and LOC Cats C/D to 1/8 SM.

ASR

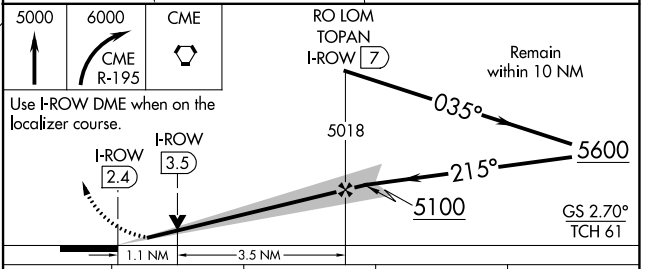
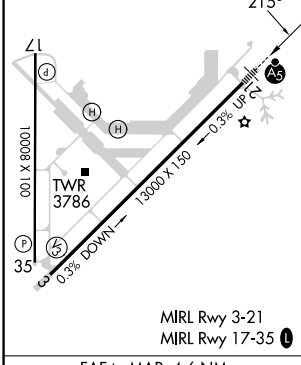
MALSR

MISSED APPROACH: Climb to 5000 then climbing right turn to 6000 on CME VORTAC R-195 to CME VORTAC and hold, continue climb-in-hold to 6000.

ATIS 128.45 306.2	ROSWELL APP CON* 119.6 239.0	ROSWELL TOWER* 118.5 (CTAF) 0 233.7	GND CON 121.9 348.6	CLNC DEL 132.875 282.25	UNICOM 122.95
-----------------------------	--	---	-------------------------------	-----------------------------------	-------------------------



ELEV 3671	D	TDZE 3633
-----------	----------	-----------



CATEGORY	A	B	C	D
S-ILS 21	3833-1/2 200 (200-1/2)			
S-LOC 21	4020-1/2	387 (400-1/2)	4020-5/8	387 (400-5/8)
C CIRCLING	4140-1	469 (500-1)	4140-1 1/2	4300-2 629 (700-2)

SW-1, 26 DEC 2024 to 23 JAN 2025

SW-1, 26 DEC 2024 to 23 JAN 2025