

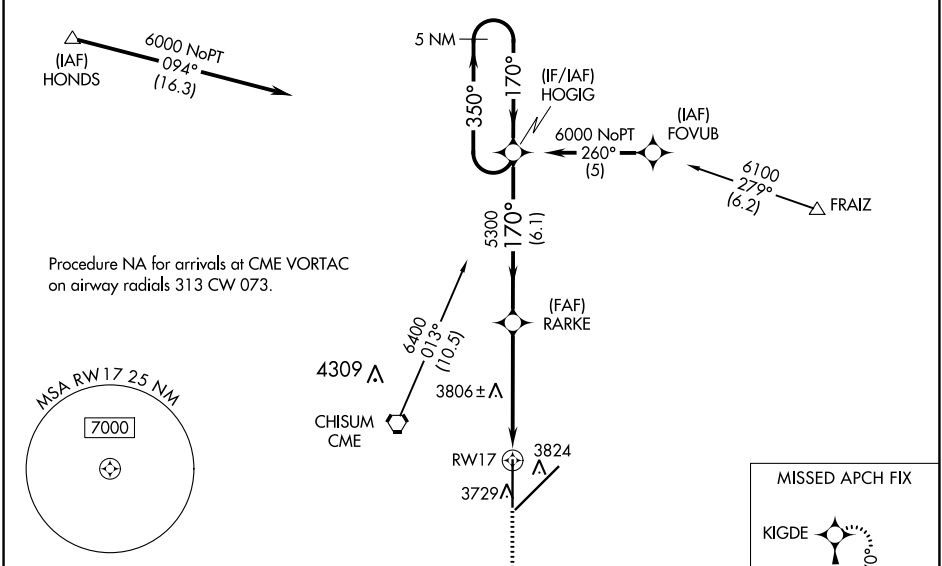
WAAS CH 65702 W17A	APP CRS 170°	Rwy Idg 10008 TDZE 3666 Apt Elev 3671
--	------------------------	--

RNAV (GPS) RWY 17

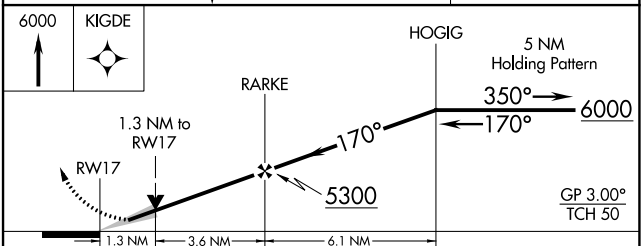
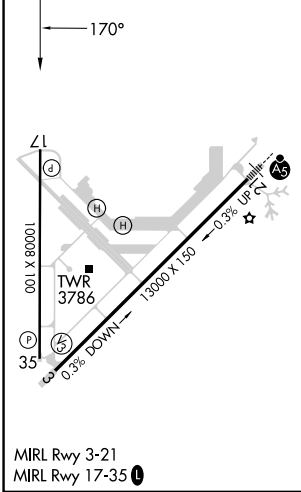
ROSWELL AIR CENTER (ROW)

RNP APCH - GPS.	<p>▽ For uncompensated Baro-VNAV systems, LNAV/VNAV NA below -22°C or above 41°C. When local altimeter setting not received, use Artesia altimeter setting: increase LPV DA to 4083 feet and all visibilities ¼ SM; increase LNAV/VNAV DA to 4083 feet; increase all MDAs 80 feet and visibility LNAV Cat C ¼ SM and Circling Cat D ¼ SM. VDP and Baro-VNAV NA when using Artesia altimeter setting.</p> <p>⚠ ASR</p>	<p>MISSED APPROACH: Climb to 6000 direct KIGDE and hold.</p>

ATIS 128.45 306.2	ROSWELL APP CON* 119.6 239.0	ROSWELL TOWER* 118.5 (CTAF) 0 233.7	GND CON 121.9 348.6	CLNC DEL 132.875 282.25	UNICOM 122.95
-----------------------------	--	---	-------------------------------	-----------------------------------	-------------------------



ELEV 3671	D	TDZE 3666
-----------	----------	-----------



CATEGORY	A	B	C	D
LPV DA	3916-3/4 250 (300-3/4)			
LNAV/VNAV DA	4003-1 1/4 337 (400-1 1/4)			
LNAV MDA	4120-1	454 (500-1)	4120-1 1/4 454 (500-1 1/4)	4120-1 1/2 454 (500-1 1/2)
CIRCLING	4140-1 1/4	469 (500-1 1/4)	4140-1 1/2 469 (500-1 1/2)	4300-2 629 (700-2)

SW-1, 26 DEC 2024 to 23 JAN 2025

SW-1, 26 DEC 2024 to 23 JAN 2025