

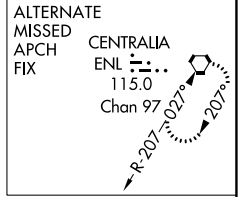
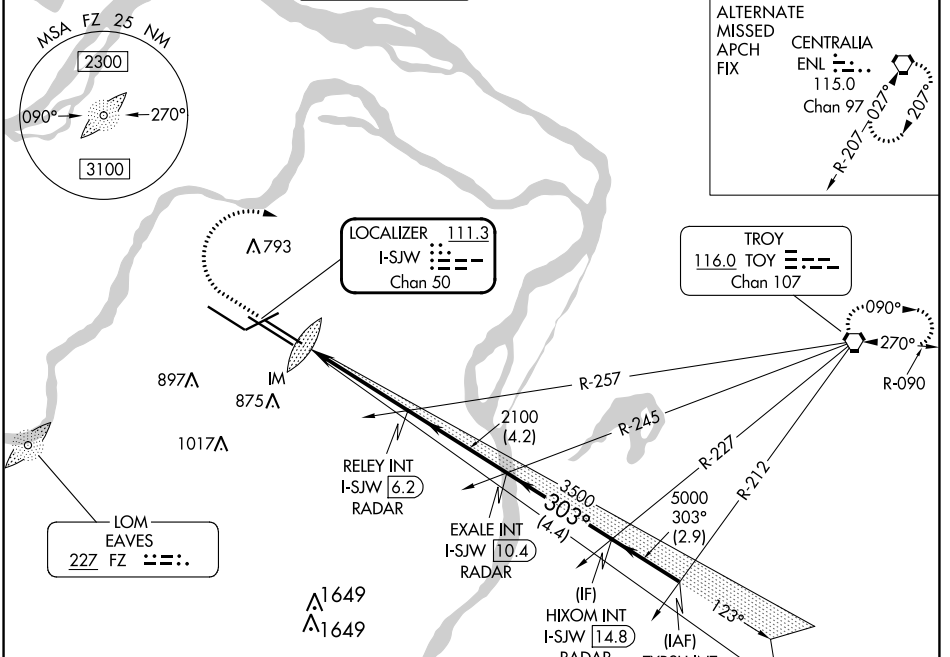
LOC/DME I-SJW 111.3 Chan 50	APP CRS 303°	Rwy Idg TDZE Apt Elev 9013 605 618
---	------------------------	--

ILS RWY 30R (CAT II & III)

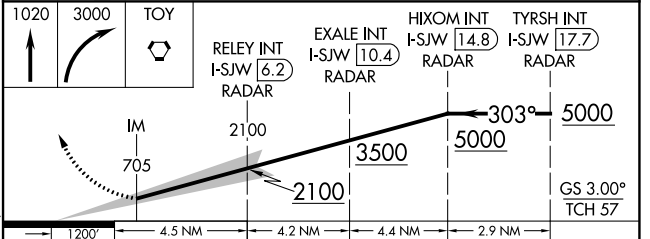
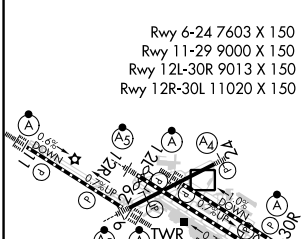
ST LOUIS LAMBERT INTL (STL)

RADAR required for procedure entry.		ALSF-2 	MISSED APPROACH: Climb to 1020 then climbing right turn to 3000 direct TOY VORTAC and hold.
Simultaneous approach authorized with Rwy 29.			

D-ATIS 125.025 379.925	ST. LOUIS APP CON 132.125 360.6	ST. LOUIS TOWER 120.05 284.6	GND CON 121.9 348.6 (Inbound) 121.65 377.175 (Outbound) 118.925 227.125 (Rwy 11/29)	CLNC DEL 119.5 363.1	CPDLC
--	---	--	---	--------------------------------	-------



ELEV 618	D	TDZE 605
----------	----------	----------



CATEGORY	A	B	C	D
S-ILS 30R	CAT II RA 116/12 100 DA 705			
S-ILS 30R	CAT III RVR 06			

CATEGORY II & III ILS - SPECIAL AIRCREW & AIRCRAFT CERTIFICATION REQUIRED

NC-3, 26 DEC 2024 to 23 JAN 2025

NC-3, 26 DEC 2024 to 23 JAN 2025