

APP CRS	Rwy Idg	7323
064°	TDZE	551
	Apt Elev	618


RNAV (GPS) RWY 6

ST LOUIS LAMBERT INTL (STL)

RNP APCH.

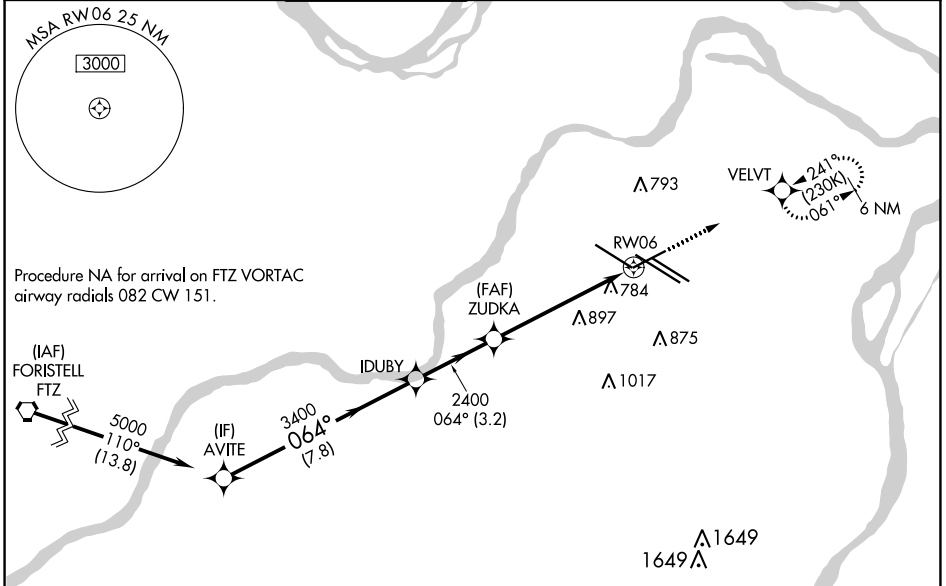
▼ WAAS VNAV NA. For uncompensated Baro-VNAV systems, LNAV/VNAV NA below -18°C or above 54°C. For inop ALS increase LNAV/VNAV Cat E visibility to 1 1/2 SM and LNAV Cats C/D/E visibility to 1 3/8 SM.

MALSR

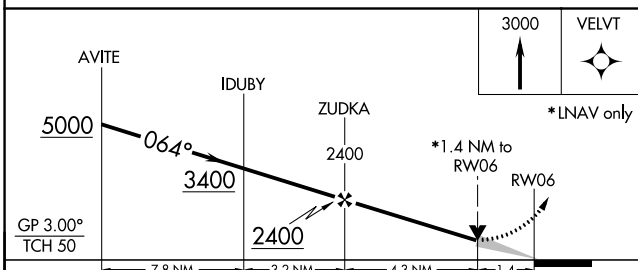


MISSED APPROACH: Climb to 3000 direct VELVT and hold, continue climb-in-hold to 3000.

D-ATIS	ST. LOUIS APP CON	ST. LOUIS TOWER	GND CON	CLNC DEL	CPDLC
125.025	132.125 360.6	132.475 239.275	121.9 348.6 (Inbound)	119.5 363.1	
379.925			121.65 377.175 (Outbound)		
			118.925 227.125 (Rwy 11/29)		



ELEV 618	D TDZE 551
----------	-------------------



Rwy 6-24 7603 X 150

Rwy 11-29 9000 X 150

Rwy 12L-30R 9013 X 150

Rwy 12R-30L 11020 X 150

064°

TWR 774

HIRL all Rwys

TDZ/CL Rws 11, 12L, 12R, 29, and 30R

CATEGORY	A	B	C	D	E
LNAV/VNAV DA	1103/60 552 (500-1 1/4)				
LNAV MDA	1040/24 489 (500-1/2)		1040/50 489 (500-1)		

NC-3, 26 DEC 2024 to 23 JAN 2025

NC-3, 26 DEC 2024 to 23 JAN 2025