

ST. LOUIS, MISSOURI

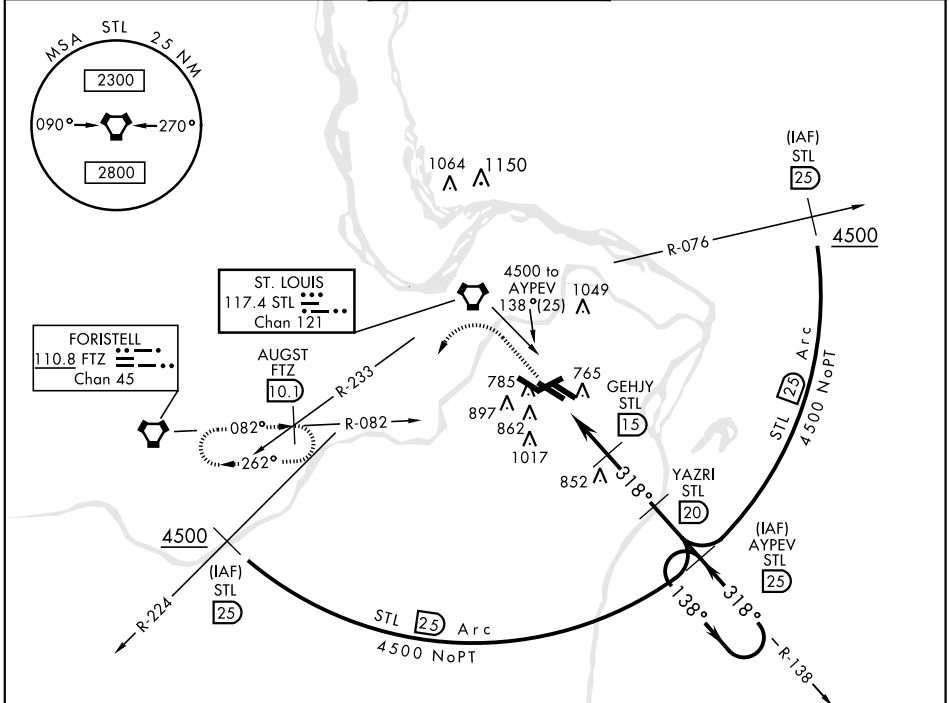
TACAN RWY 30L

VORTAC STL 117.4 Chan 121	APCH CRS 318°	Rwy ldg 10,818 TDZE 583 Arprt Elev 618
---	-------------------------	---

AL-360 [USAF]

ST. LOUIS LAMBERT INTL (KSTL)

<p>NA * Inoperative table does not apply.</p>		<p>MALSR A5</p>	<p>MISSED APPROACH: Climb to 5000 via STL R-138 and FTZ VORTAC R-082 to AUGST INT/FTZ 10.1 DME and hold.</p>		
<p>ATIS 125.025 379.925</p>	<p>ST. LOUIS APP CON 121.02 338.25</p>	<p>N 120.05 W 132.475 S 118.5 E 284.6 W 239.275 S 257.7</p>	<p>GND CON (Inbd) 121.9 348.6 (Outbd) 121.65 377.175 (West) 118.925 227.125</p>	<p>CLNC DEL 119.5 363.1</p>	



NC-3, 26 DEC 2024 to 23 JAN 2025

NC-3, 26 DEC 2024 to 23 JAN 2025

EMERG SAFE ALT 100 NM 3500		ELEV 618		TDZE 583	
<p>5000 STL R-138</p>	<p>FTZ VORTAC R-082</p>	<p>AUGST INT FTZ 10.1</p>	<p>GEHJY 15</p>	<p>YAZRI 20</p>	<p>AYPEV R-138 25</p>
<p>VORTAC 9.7</p>		<p>318°</p>		<p>138°</p>	
<p>5.3 NM</p>		<p>2300</p>		<p>3600</p>	
<p>2.95° TCH 58</p>		<p>4500</p>		<p>318°</p>	
<p>5000</p>	<p>FTZ VORTAC R-082</p>	<p>AUGST INT FTZ 10.1</p>	<p>GEHJY 15</p>	<p>YAZRI 20</p>	<p>AYPEV R-138 25</p>
<p>Rwy 6-24 7607 x 150</p>	<p>Rwy 11-29 9001 x 150</p>	<p>Rwy 12L-30R 9003 x 150</p>	<p>Rwy 12R-30L 11,019 x 200</p>	<p>Rwy 12R ldg 10,552'</p>	<p>Rwy 30L ldg 10,818'</p>
<p>TWR 774</p>	<p>318° 5.3 NM from FAF</p>				
<p>HIRL All Rwy REIL Rwy 12L TDZL/CL Rwy 11-29, 12L-30R, and 12R</p>					
<p>CATEGORY</p>	<p>A</p>	<p>B</p>	<p>C</p>	<p>D</p>	<p>E</p>
<p>S-30L *</p>	<p>1100/50</p>	<p>517 (500-1)</p>	<p>1100-1½ 517(500-1½)</p>	<p>1100-1¾</p>	<p>517 (500-1¾)</p>
<p>CIRCLING</p>	<p>NOT AUTHORIZED</p>				

ST. LOUIS, MISSOURI

38°45'N-90°22'W

ST. LOUIS LAMBERT INTL (KSTL)

Amdt 1 18200

TACAN RWY 30L