

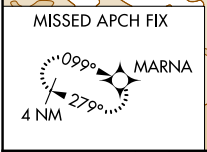
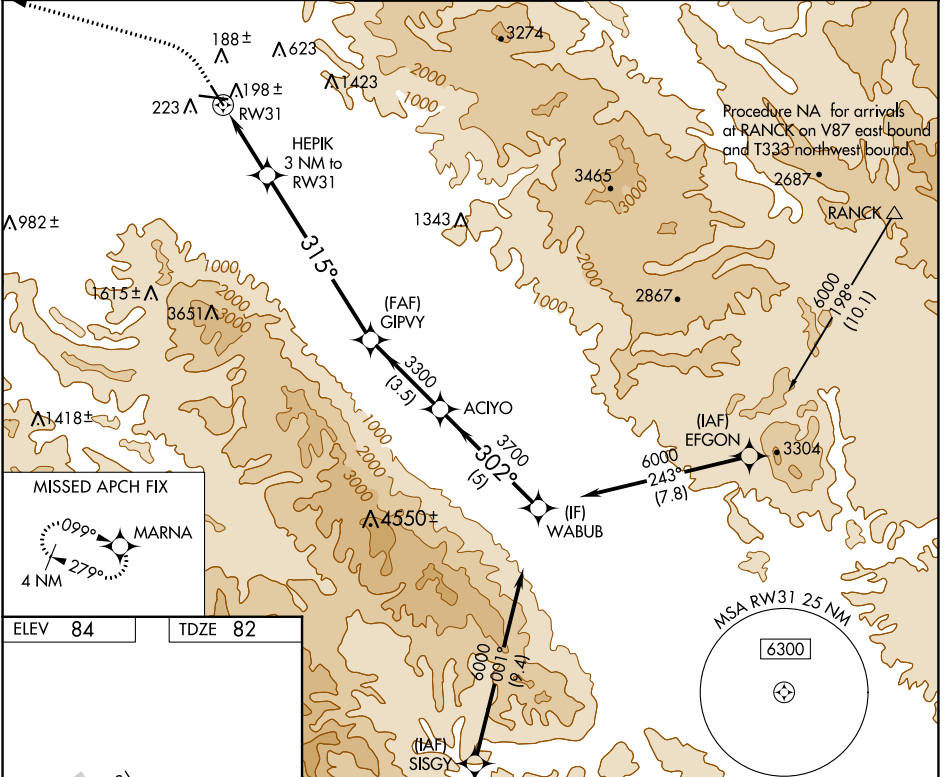
APP CRS	Rwy Idg	<b>4825</b>
<b>315°</b>	TDZE	<b>82</b>
	Apt Elev	<b>84</b>

# RNAV (GPS) Y RWY 31

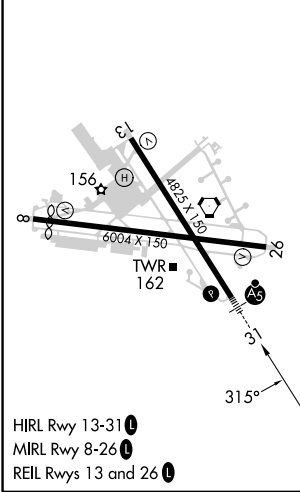
SALINAS MUNI (SNS)

RNP APCH - GPS.		MALS R	MISSED APPROACH: Climb to 600, then climbing left turn to 3000 direct MARNA and hold, continue climb-in-hold to 3000.
<p>⚠ Circling NA for Cat C northeast of Rwy 13 and north of Rwy 26. Circling NA for Cat D northeast of Rwy 13-31.</p>			

ATIS <b>124.85</b>	NORCAL APP CON <b>133.0 251.15</b>	SALINAS TOWER * <b>119.525 (CTAF) 0 239.3</b>	GND CON <b>121.7</b>	UNICOM <b>123.0</b>
-----------------------	---------------------------------------	--	-------------------------	------------------------



ELEV 84	TDZE 82
---------	---------



- HIRL Rwy 13-31
- MIRL Rwy 8-26
- REIL Rwy 13 and 26

600	3000	MARNA	VGS1 and descent angles not coincident (VGS1 Angle 3.00/TCH 59).		WABUB
			GIPVY	ACIYO	6000
		HEPIK 3 NM to RWY 31	≤ 3.00°	3700	
		1 NM to RWY 31	TCH 50	3300	
		1080	315°	302°	
		1 NM	2 NM	7 NM	3.5 NM
CATEGORY	A	B	C	D	
LNAV MDA	460/24	378 (400-½)	460/35	378 (400-¾)	
CIRCLING	540-1	456 (500-1)	800-2 716 (800-2)	1620-3 1536 (1600-3)	

SW-2, 26 DEC 2024 to 23 JAN 2025

SW-2, 26 DEC 2024 to 23 JAN 2025