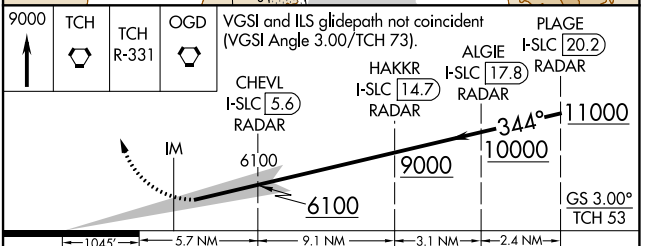
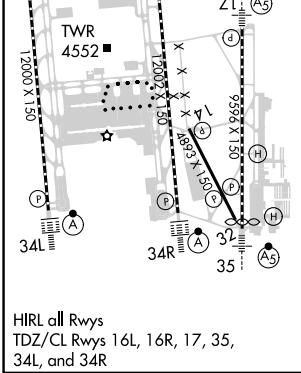
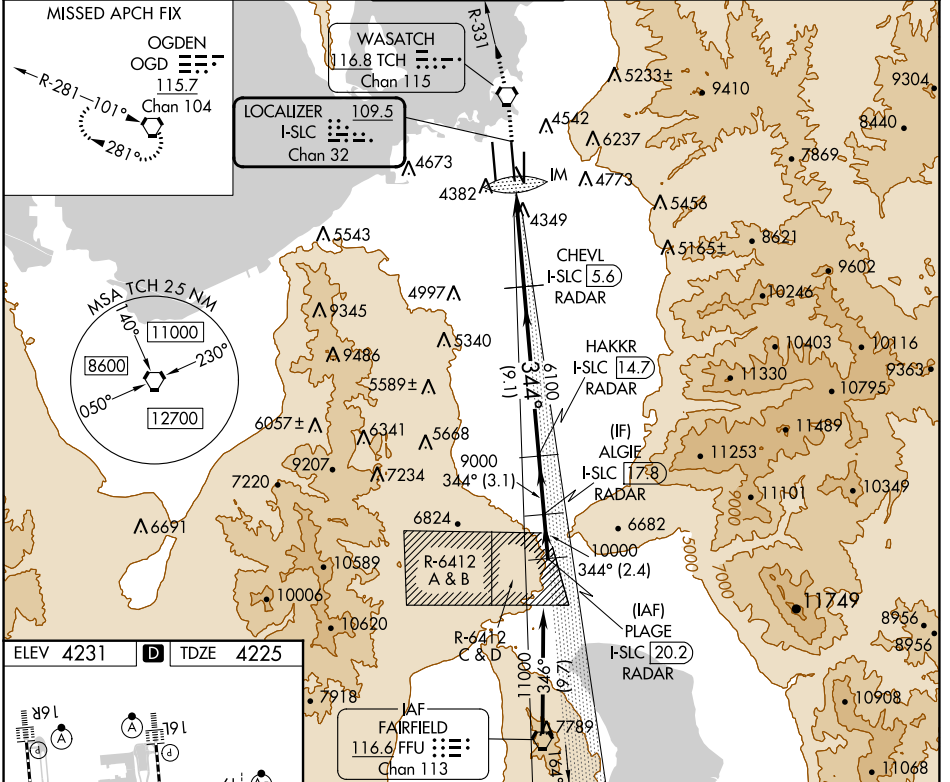


LOC/DME I-SLC <b>109.5</b> Chan 32	APP CRS <b>344°</b>	Rwy Idg <b>12002</b> TDZE <b>4225</b> Apt Elev <b>4231</b>
--	------------------------	--

# ILS RWY 34R (SA CAT I)

SALT LAKE CITY INTL (SLC)

<p>Simultaneous approach authorized. Requires specific OPSPEC, MSPEC, or LOA approval.</p>		<p>ALSIF-2</p>	<p>MISSED APPROACH: Climb to 9000 direct TCH VORTAC and on TCH VORTAC R-331 to OGD VORTAC and hold.</p>		
D-ATIS <b>124.75 125.625</b>	SALT LAKE CITY APP CON <b>125.7 284.6</b>	SALT LAKE CITY TOWER <b>119.05 257.8</b>	GND CON <b>123.775 348.6</b>	CLNC DEL <b>127.3 379.975</b>	CPDLC



CATEGORY	A	B	C	D
S-ILS 34R	RA 151/14 150 DA 4375			
<p><b>SA CATEGORY I ILS - SPECIAL AIRCREW &amp; AIRCRAFT CERTIFICATION REQUIRED</b></p>				

SW-4, 26 DEC 2024 to 23 JAN 2025

SW-4, 26 DEC 2024 to 23 JAN 2025