

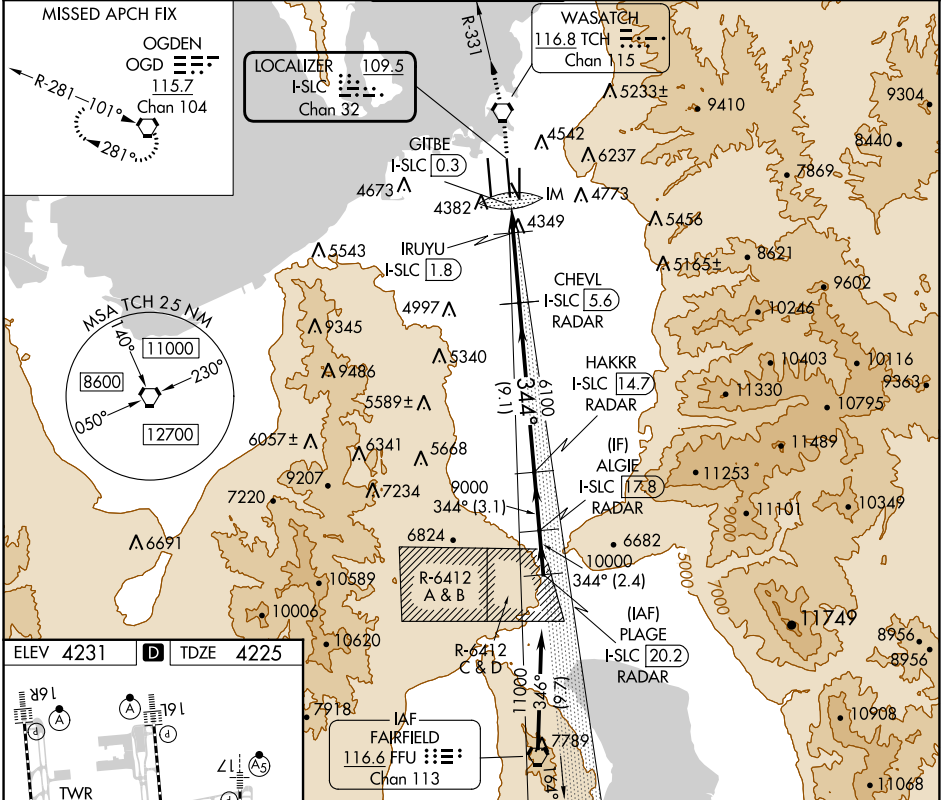
LOC/DME I-SLC <b>109.5</b> Chan 32	APP CRS <b>344°</b>	Rwy Idg <b>12002</b> TDZE <b>4225</b> Apt Elev <b>4231</b>
--	------------------------	--

# ILS or LOC RWY 34R

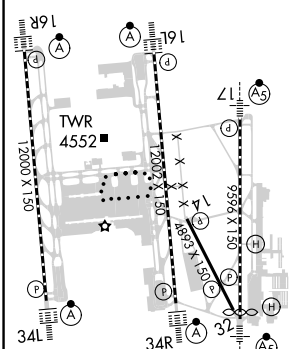
SALT LAKE CITY INTL (SLC)

DME required for LOC only. Simultaneous approach authorized.		ALSIF-2 	MISSED APPROACH: Climb to 9000 direct TCH VORTAC and on TCH VORTAC R-331 to OGD VORTAC and hold.		
---	--	-------------	--	--	--

D-ATIS <b>124.75 125.625</b>	SALT LAKE CITY APP CON <b>125.7 284.6</b>	SALT LAKE CITY TOWER <b>119.05 257.8</b>	GND CON <b>123.775 348.6</b>	CLNC DEL <b>127.3 379.975</b>	CPDLC
---------------------------------	--	---	---------------------------------	----------------------------------	-------

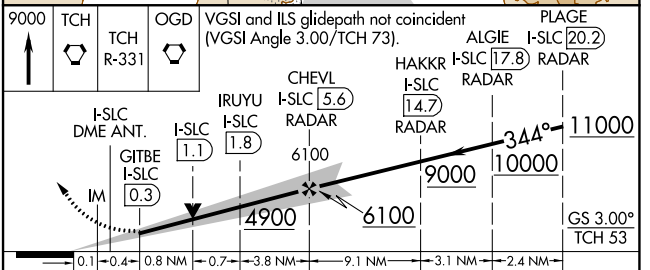


ELEV 4231	<b>D</b>	TDZE 4225
-----------	----------	-----------



HIRL all Rwys  
TDZ/CL Rwys 16L, 16R, 17, 35, 34L, and 34R

FAF to MAP 5.3 NM					
Knots	60	90	120	150	180
Min:Sec	5:18	3:32	2:39	2:07	1:46



CATEGORY	A	B	C	D
S-ILS 34R	4425/18 200 (200-1/2)			
S-LOC 34R	4700/24	475 (500-1/2)	4700/50	475 (500-1)

SW-4, 26 DEC 2024 to 23 JAN 2025

SW-4, 26 DEC 2024 to 23 JAN 2025