

RUGGD THREE DEPARTURE (RNAV)

AL-365 (FAA)

SALT LAKE CITY INTL (SLC)
SALT LAKE CITY, UTAH

SW-4, 26 DEC 2024 to 23 JAN 2025

D-ATIS 124.75 125.625
 CLNC DEL 127.3 379.975
 CPDLC
 GND CON 121.9 348.6 (Rwys 14-32, 17-35)
 123.775 348.6 (Rwys 16L-34R, 16R-34L)
 SALT LAKE CITY TOWER
 119.05 257.8 (Rwy 16L-34R)
 118.3 257.8 (Rwys 14-32, 17-35)
 132.65 336.4 (Rwy 16R-34L)
 SALT LAKE CITY DEP CON
 135.5 316.15

TAKEOFF MINIMUMS

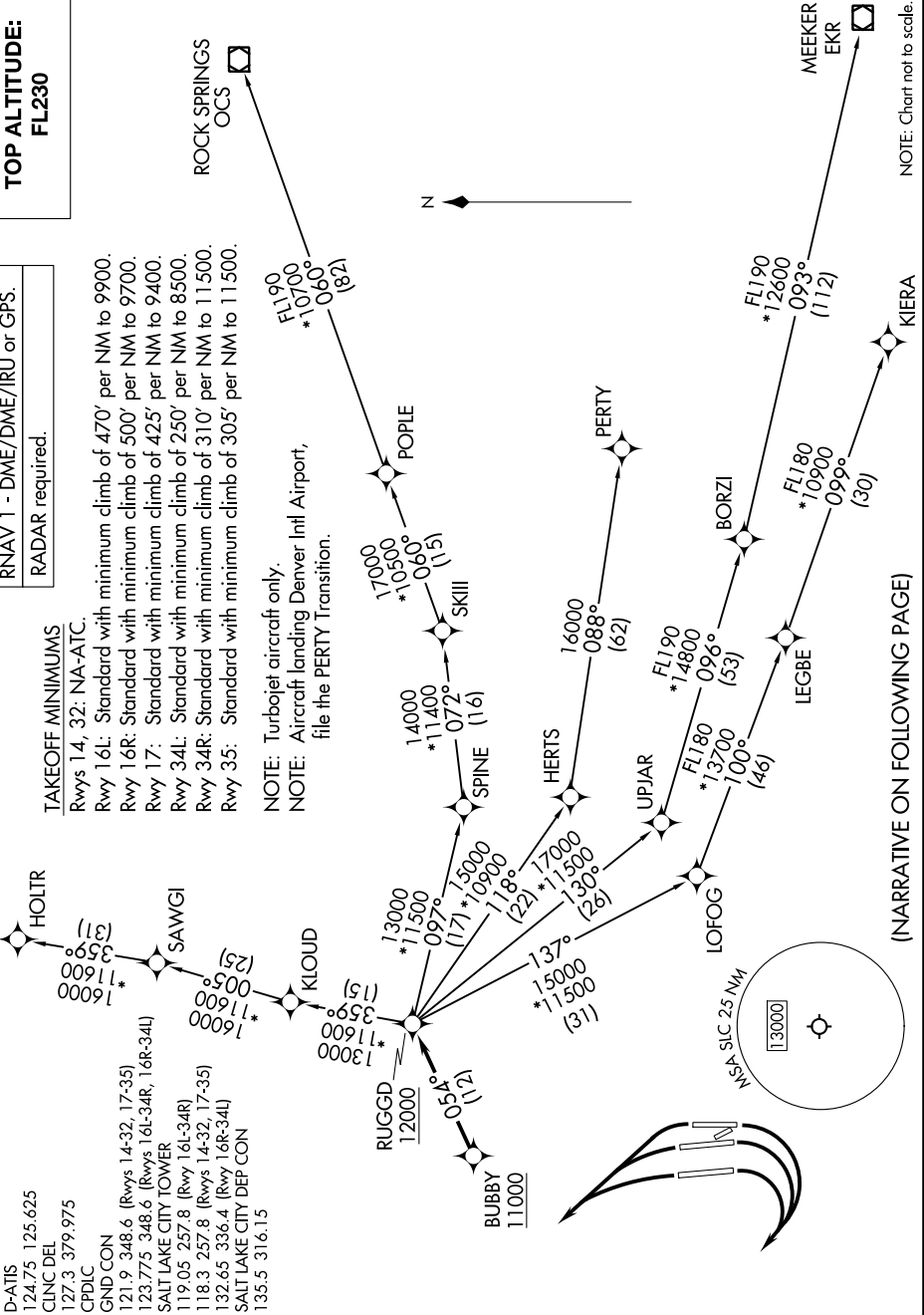
Rwys 14, 32: NA-AIC.
 Rwy 16L: Standard with minimum climb of 470' per NM to 9900.
 Rwy 16R: Standard with minimum climb of 500' per NM to 9700.
 Rwy 17: Standard with minimum climb of 425' per NM to 9400.
 Rwy 34L: Standard with minimum climb of 250' per NM to 8500.
 Rwy 34R: Standard with minimum climb of 310' per NM to 11500.
 Rwy 35: Standard with minimum climb of 305' per NM to 11500.

NOTE: Turbojet aircraft only.
 NOTE: Aircraft landing Denver Intl Airport, file the PERTY Transition.

RNAV 1 - DME/DME/IRU or GPS.
 RADAR required.

TOP ALTITUDE:
FL230

ROCK SPRINGS
OCS



NOTE: Chart not to scale.

(NARRATIVE ON FOLLOWING PAGE)

SW-4, 26 DEC 2024 to 23 JAN 2025

RUGGD THREE DEPARTURE (RNAV)

(RUGGD3.RUGGD) 20APR23

SALT LAKE CITY, UTAH
SALT LAKE CITY INTL (SLC)