

# ALAMO FOUR DEPARTURE

RADAR required.

**TOP ALTITUDE:  
ASSIGNED BY ATC**

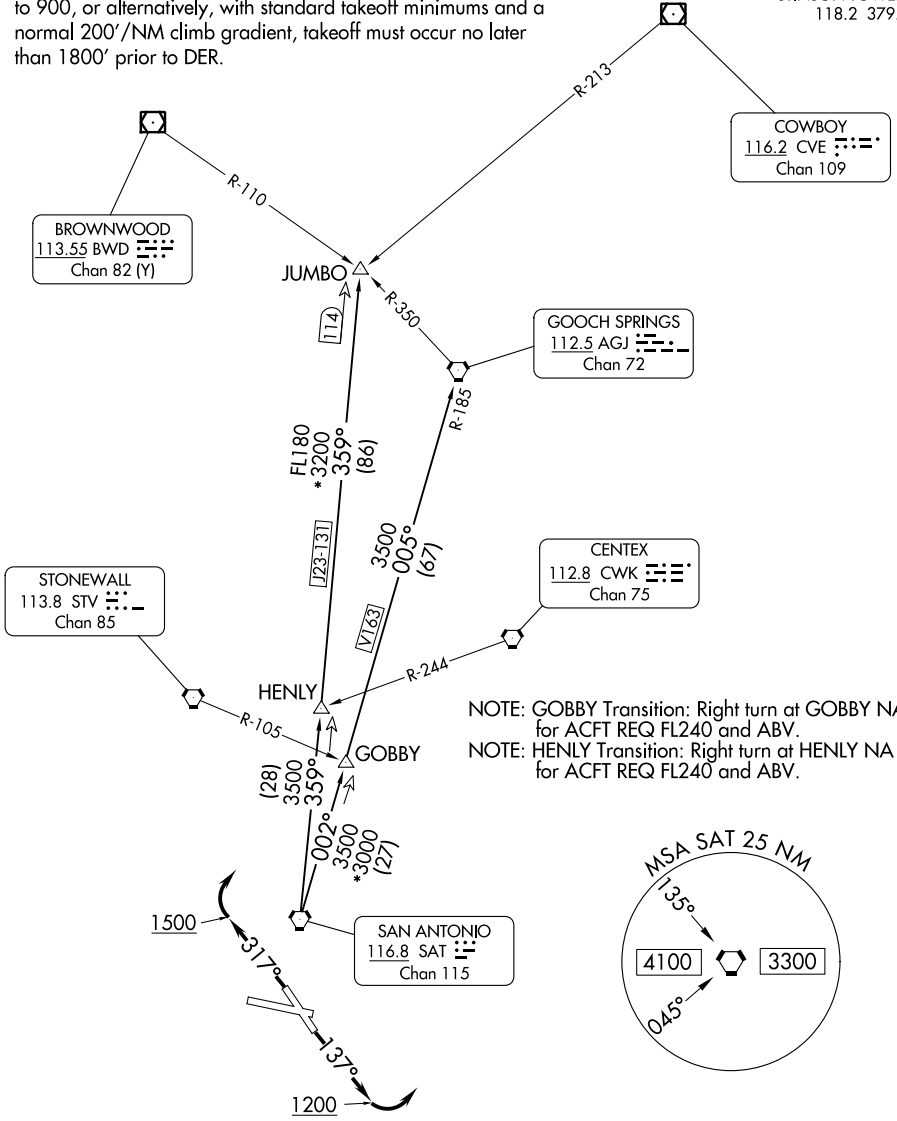
SAN ANTONIO DEP CON  
125.7 290.225  
ATIS  
128.8  
CLNC DEL (When twr closed)  
121.7  
GND CON  
121.7 379.9  
STINSON TOWER \*  
118.2 379.9

### TAKEOFF MINIMUMS

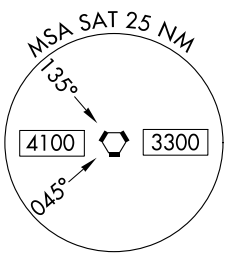
Rwy 14, 32: Standard.

Rwy 9: Standard with minimum climb of 230'/NM to 1900.

Rwy 27: 300-1½ or standard with minimum climb of 225'/NM to 900, or alternatively, with standard takeoff minimums and a normal 200'/NM climb gradient, takeoff must occur no later than 1800' prior to DER.



NOTE: GOBBY Transition: Right turn at GOBBY NA for ACFT REQ FL240 and ABV.  
NOTE: HENLY Transition: Right turn at HENLY NA for ACFT REQ FL240 and ABV.



(CONTINUED ON FOLLOWING PAGE)

NOTE: Chart not to scale

SC-3, 26 DEC 2024 to 23 JAN 2025

SC-3, 26 DEC 2024 to 23 JAN 2025

# ALAMO FOUR DEPARTURE