

# LEJON FOUR DEPARTURE

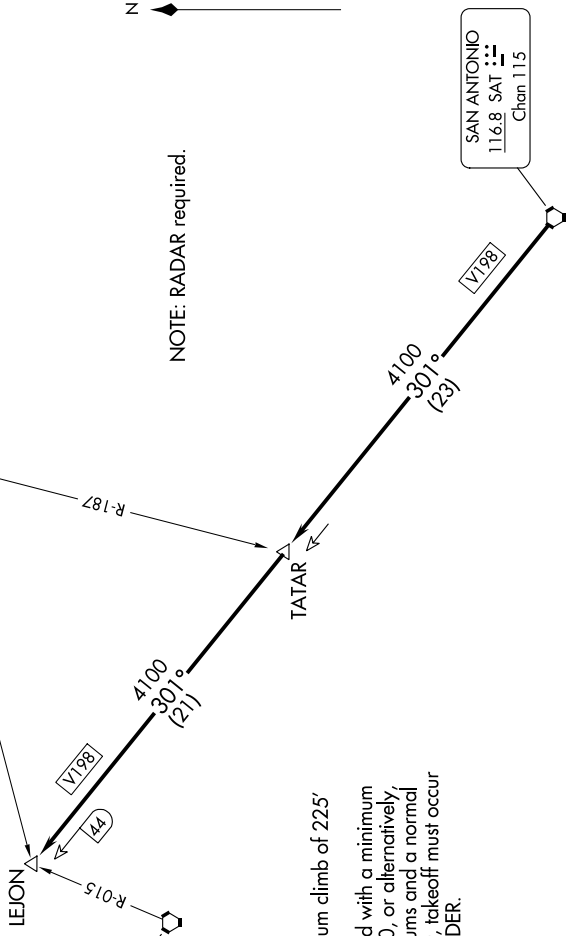
ATIS  
128.8  
CLNC DEL (When nwr closed)  
121.7  
GND CON  
121.7 379.9  
SAN ANTONIO DEP CON  
125.7 290 225  
STINSON TOWER ★  
118.2 379.9



NOTE: RADAR required.

STONEWALL  
113.8 STV  
Chan 85

SAN ANTONIO  
116.8 SAT  
Chan 115



SC-3, 26 DEC 2024 to 23 JAN 2025

NOTE: Chart not to scale

### TAKEOFF MINIMUMS

Rwy 14, 32: Standard.  
Rwy 9: Standard with minimum climb of 225' per NM to 1900.  
Rwy 27: 300-1/4 or standard with a minimum climb of 221' per NM to 900, or alternatively with standard takeoff minimums and a normal 200' per NM climb gradient, takeoff must occur no later than 1700' prior to DER.

### DEPARTURE ROUTE DESCRIPTION

▲ TAKEOFF RUNWAYS 9, 14, 27, 32: Climb on assigned heading and altitude for RADAR vectors to SAT VORTAC, thence, . . . . . on depicted route to LEJON INT. Expect filed altitude 10 minutes after departure.

SC-3, 26 DEC 2024 to 23 JAN 2025