

LUCK1 ONE ARRIVAL (RNAV)

AL-373 (FAA)

SAN DIEGO INTL (SAN)
SAN DIEGO, CALIFORNIA

SW-3, 26 DEC 2024 to 23 JAN 2025

ARRIVAL ROUTE DESCRIPTION

HOGGZ TRANSITION (HOGGZ.LUCK11)
IMPERIAL TRANSITION (IPL.LUCK11)
LVELL TRANSITION (LVELL.LUCK11)
MOMAR TRANSITION (MOMAR.LUCK11)
PARKER TRANSITION (PKE.LUCK11)
TTRUE TRANSITION (TTRUE.LUCK11)

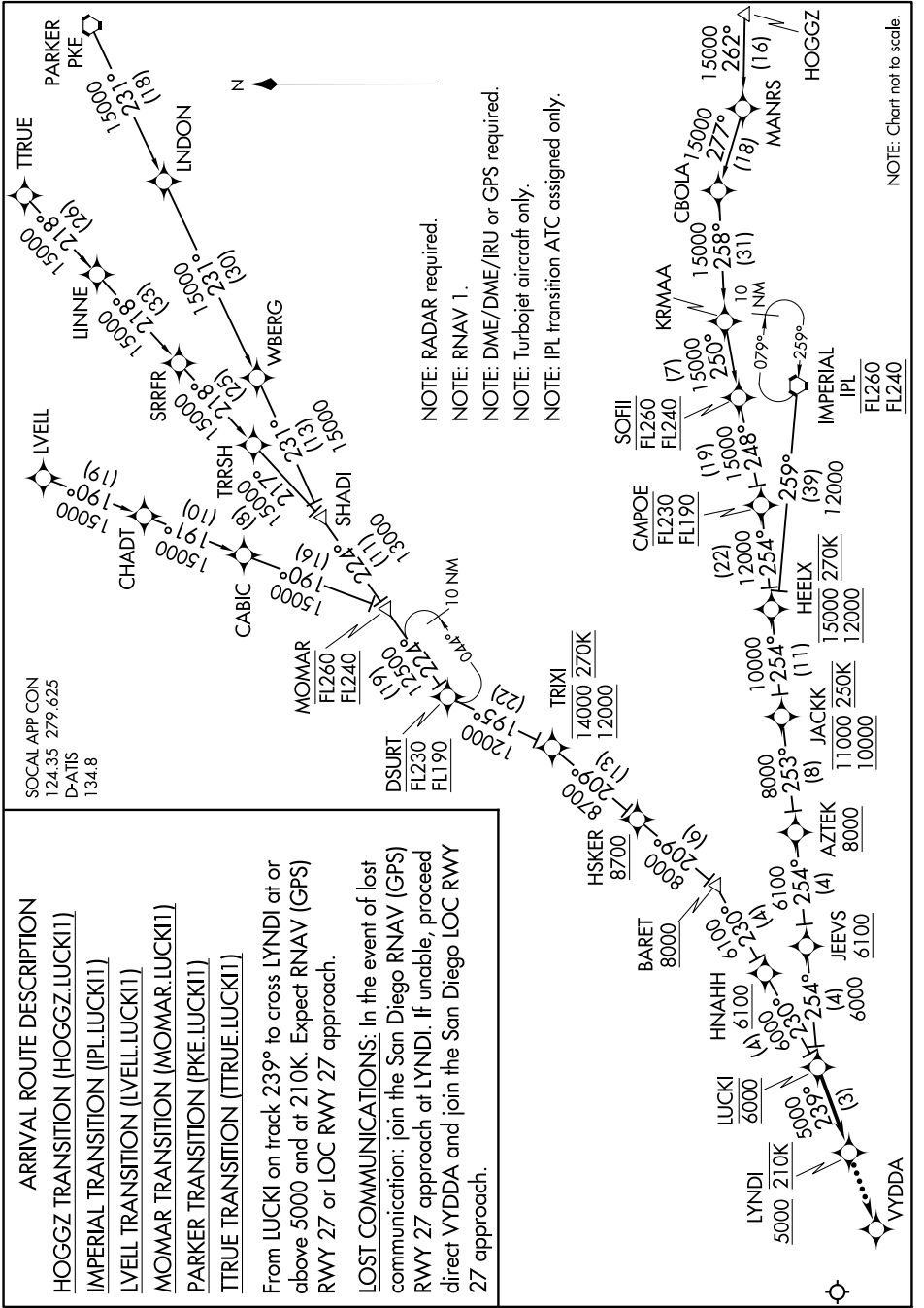
From LUCK1 on track 239° to cross LYNDI at or above 5000 and at 210K. Expect RNAV (GPS) RWY 27 or LOC RWY 27 approach.

LOST COMMUNICATIONS: In the event of lost communication: join the San Diego RNAV (GPS) RWY 27 approach at LYNDI. If unable, proceed direct VYDDA and join the San Diego LOC RWY 27 approach.

LUCK1 ONE ARRIVAL (RNAV)

(LUCKI.LUCK11) 10NOV16

SAN DIEGO, CALIFORNIA
SAN DIEGO INTL (SAN)



SW-3, 26 DEC 2024 to 23 JAN 2025

NOTE: Chart not to scale.