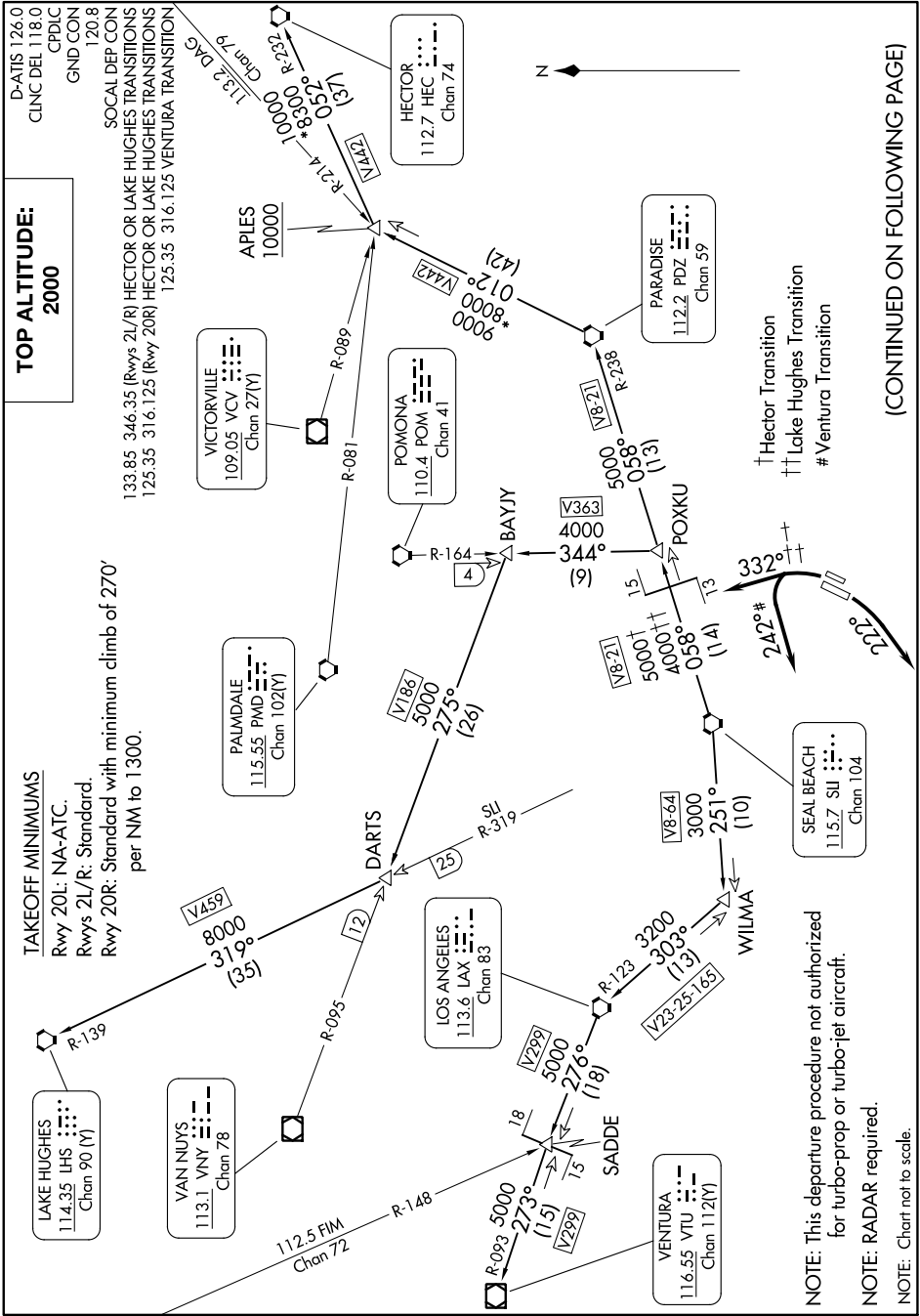


# ANAHEIM ONE DEPARTURE

AL-377 (FAA)

JOHN WAYNE/ORANGE COUNTY (SNA)  
SANTA ANA, CALIFORNIA

SW-3, 26 DEC 2024 to 23 JAN 2025



(CONTINUED ON FOLLOWING PAGE)

SW-3, 26 DEC 2024 to 23 JAN 2025

# ANAHEIM ONE DEPARTURE

SANTA ANA, CALIFORNIA  
JOHN WAYNE/ORANGE COUNTY (SNA)