

| | | |
|-------------|----------|-------------|
| APP CRS | Rwy Idg | 5700 |
| 016° | TDZE | 56 |
| | Apt Elev | 56 |

RNAV (RNP) Z RWY 2L

JOHN WAYNE/ORANGE COUNTY (SNA)

RNP AR APCH - GPS. Authorization required. From OSOYI: RF.

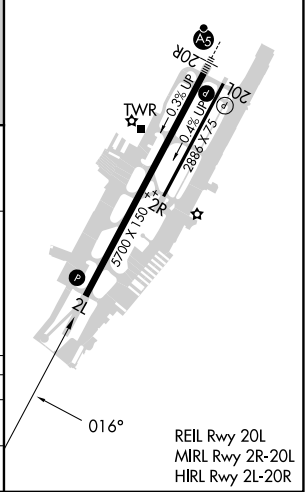
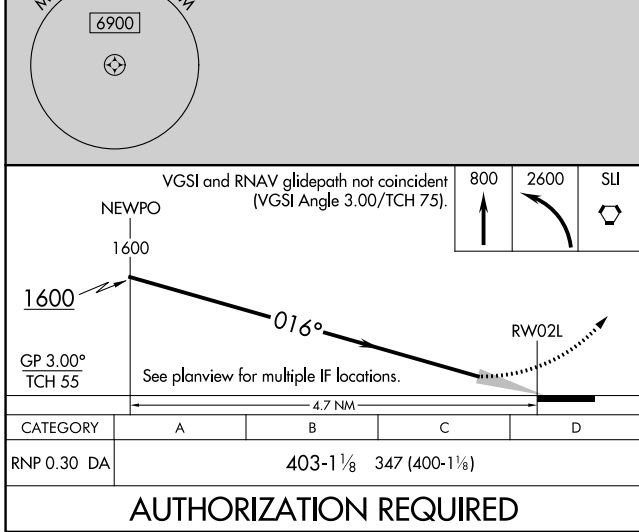
▼ For uncompensated Baro-VNAV systems, procedure NA below 5°C or above 54°C.

MISSED APPROACH: Climb to 800 then climbing left turn to 2600 direct SLI VORTAC and hold.

| | | | | | | |
|--------------|--------------------|-------------------------------|--------------|--------------|-------|---------------|
| D-ATIS | SOCAL APP CON | JOHN WAYNE TOWER ★ | GND CON | CLNC DEL | CPDLC | UNICOM |
| 126.0 | 121.3 263.1 | 126.8 (CTAF) 0 343.625 | 120.8 | 118.0 | | 122.95 |



| | | | | |
|------|----|---|------|----|
| ELEV | 56 | D | TDZE | 56 |
|------|----|---|------|----|



SANTA ANA, CALIFORNIA JOHN WAYNE/ORANGE COUNTY (SNA)

Orig-A 26DEC24 33°41'N-117°52'W

RNAV (RNP) Z RWY 2L

SW-3, 26 DEC 2024 to 23 JAN 2025

SW-3, 26 DEC 2024 to 23 JAN 2025

AUTHORIZATION REQUIRED