

# GAUCH THREE DEPARTURE (RNAV)

AL-378 (FAA)

SW-3, 26 DEC 2024 to 23 JAN 2025

**DEPARTURE ROUTE DESCRIPTION**

**TAKEOFF RUNWAY 7:** Climb on heading 075° to intercept course 130° to RROJO, then on track 198° to KELLP, then on track 245 to CORRK, then on track 254° to KNNZI, then on track 331° to cross GAUCH at or above 6000, thence . . . . .

**TAKEOFF RUNWAYS 15L/R:** Climb on heading 152° to intercept course 202° to CORRK, then on track 254° to KNNZI, then on track 331° to cross GAUCH at or above 6000, thence . . . . .

**TAKEOFF RUNWAY 25:** Climb direct GRPES, then on track 255° to GRRRR, then on track 320° to cross GAUCH at or above 6000, thence . . . . .on (transition). Maintain ATC assigned altitude. Expect final altitude 10 minutes after departure.

MORRO BAY TRANSITION (GAUCH3.MGO)  
SPLINT TRANSITION (GAUCH3.SPLINT)

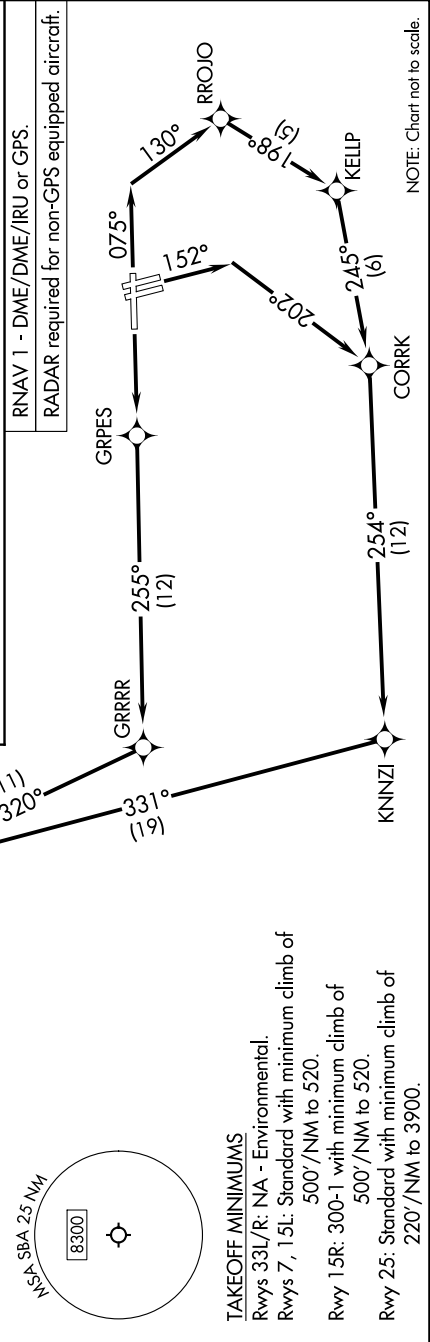
**TOP ALTITUDE:  
ASSIGNED BY ATC**

SANTA BARBARA DEP CON  
120.55 319.15  
ATIS  
132.65  
CLNC DEL  
132.9  
GND CON  
121.7  
SANTA BARBARA TOWER\*  
119.7 254.35

MORRO BAY MGO  
SPLINT  
GAUCH 6000

7200  
\*4900  
3360  
3360  
(31)  
\*6000  
\*3100  
3150  
(47)

**TAKEOFF MINIMUMS**  
Rwys 33L/R: NA - Environmental.  
Rwys 7, 15L: Standard with minimum climb of 500'/NM to 520.  
Rwy 15R: 300-1 with minimum climb of 500'/NM to 520.  
Rwy 25: Standard with minimum climb of 220'/NM to 3900.



SW-3, 26 DEC 2024 to 23 JAN 2025