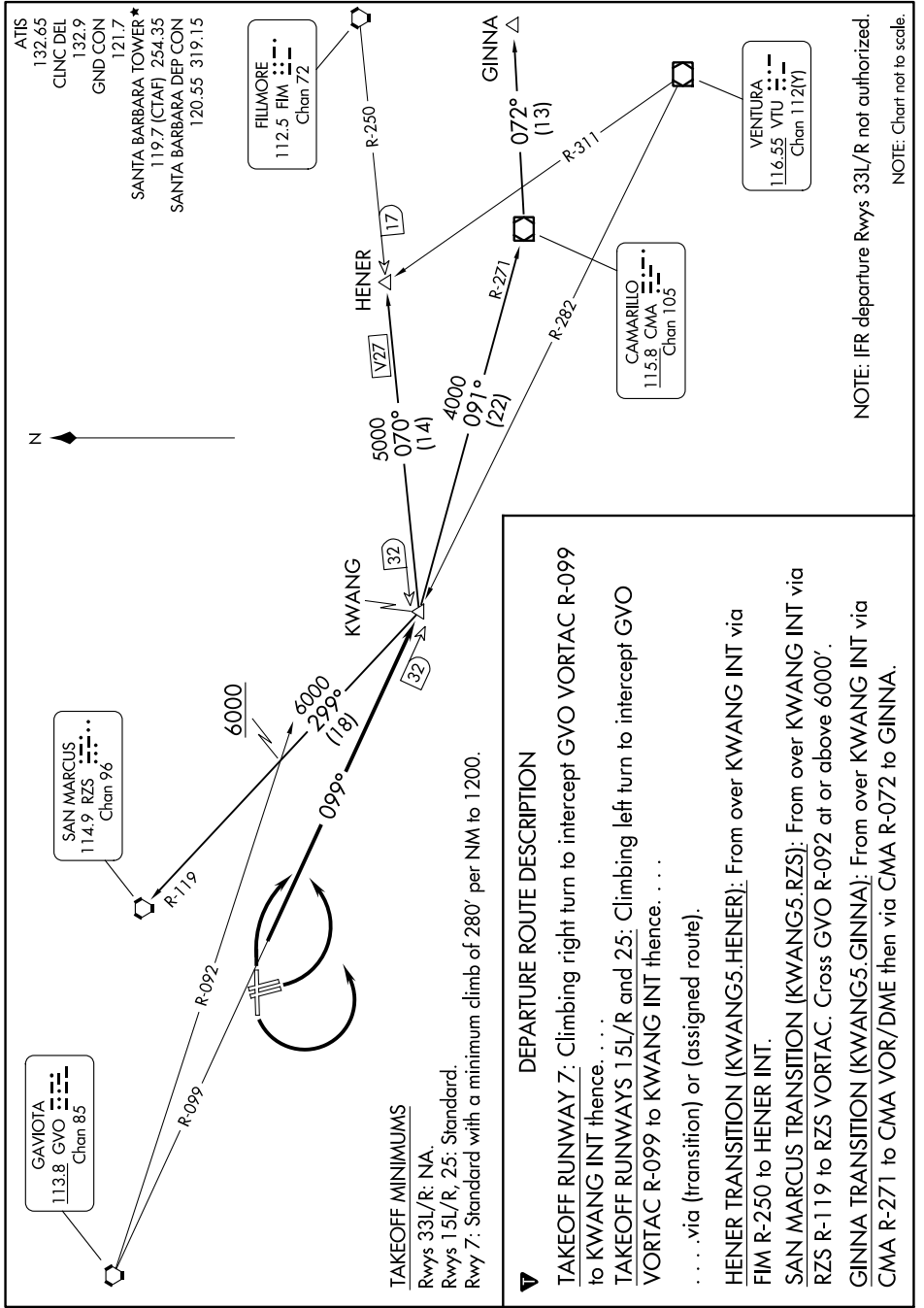


# KWANG FIVE DEPARTURE

AL-378 (FAA)

SANTA BARBARA MUNI (SBA)  
SANTA BARBARA, CALIFORNIA

SW-3, 26 DEC 2024 to 23 JAN 2025



ATIS 132.65  
 CLINC DEL 132.9  
 GND CON 121.7  
 SANTA BARBARA TOWER\* 119.7 (CTAF) 254.35  
 SANTA BARBARA DEP CON 120.55 319.15

FILMORE  
 112.5 FIM  
 Chan 7Z

CAMARILLO  
 115.8 CMA  
 Chan 105

VENTURA  
 116.55 VTU  
 Chan 112(Y)

NOTE: IFR departure Rwy 33L/R not authorized.  
NOTE: Chart not to scale.

**TAKEOFF MINIMUMS**  
 Rwys 33L/R: NA  
 Rwys 15L/R, 25: Standard.  
 Rwy 7: Standard with a minimum climb of 280' per NM to 1200.

**DEPARTURE ROUTE DESCRIPTION**

- TAKEOFF RUNWAY 7:** Climbing right turn to intercept GVO VORTAC R-099 to KWANG INT thence. . . .
- TAKEOFF RUNWAYS 15L/R and 25:** Climbing left turn to intercept GVO VORTAC R-099 to KWANG INT thence. . . .
- . . . via (transition) or (assigned route).
- HENER TRANSITION (KWANG5.HENER):** From over KWANG INT via FIM R-250 to HENER INT.
- SAN MARCUS TRANSITION (KWANG5.RZS):** From over KWANG INT via RZS R-119 to RZS VORTAC. Cross GVO R-092 at or above 6000'.
- GINNA TRANSITION (KWANG5.GINNA):** From over KWANG INT via CMA R-271 to CMA VOR/DME then via CMA R-072 to GINNA.

SW-3, 26 DEC 2024 to 23 JAN 2025