

WAAS CH <b>97622</b> <b>W28A</b>	APP CRS <b>282°</b>	Rwy Idg <b>4850</b> TDZE <b>323</b> Apt Elev <b>378</b>
--	------------------------	---

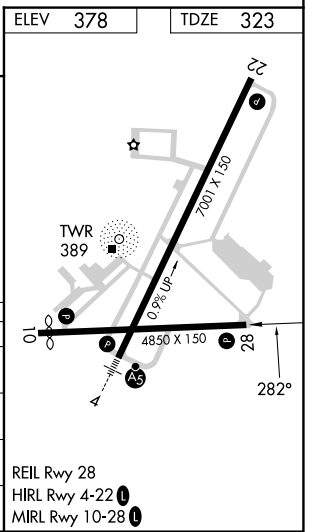
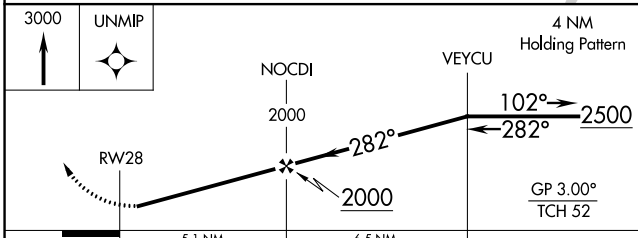
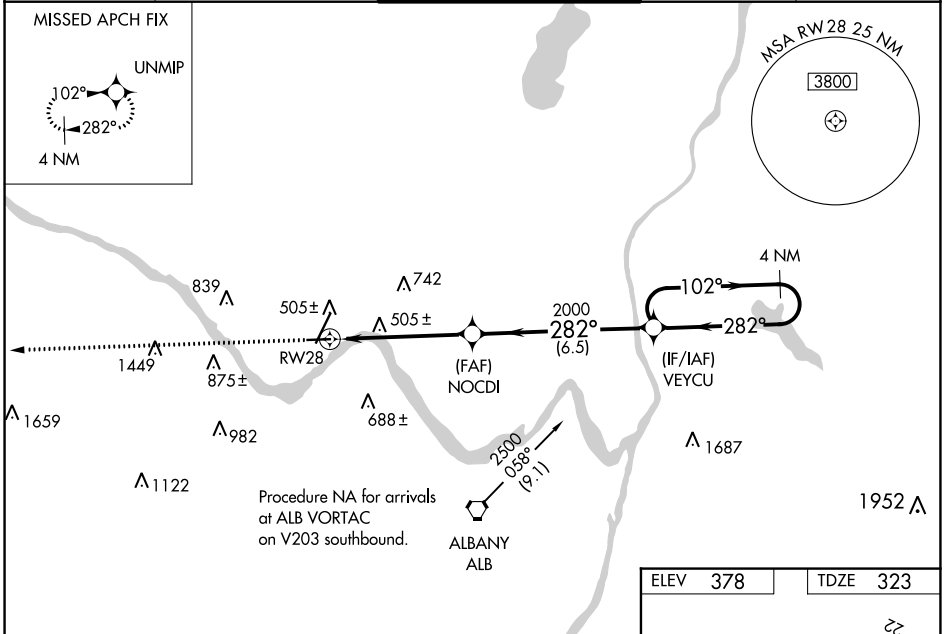
# RNAV (GPS) RWY 28

SCHENECTADY COUNTY (SCH)

**NA** Circling Rwy 10 NA at night. Baro-VNAV NA when using Albany altimeter setting. For uncompensated Baro-VNAV systems, LNAV/VNAV NA below -15°C (5°F) or above 54°C (130°F). DME/DME RNP-0.3 NA. Helicopter visibility reduction below 1 SM NA. When local altimeter setting not received, use Albany altimeter setting and increase all DA 33 feet and all MDA 40 feet; increase LNAV/VNAV all Cats visibility and LNAV Cat C/D visibility 1/8 mile.

**MISSED APPROACH:** Climb to 3000 direct UNMIP and hold.

AWOS-3 <b>119.275</b>	ALBANY APP CON <b>132.825 263.075</b>	<b>SCHENECTADY TOWER ★</b> <b>121.3 (CTAF) 321.1</b>	GND CON <b>121.9</b>	UNICOM <b>122.95</b>
--------------------------	--	---	-------------------------	-------------------------



NE-2, 26 DEC 2024 to 23 JAN 2025

NE-2, 26 DEC 2024 to 23 JAN 2025