

|  |                        |                             |   |
|--|------------------------|-----------------------------|---|
| WAAS<br>CH <b>42722</b><br><b>W04A</b> | APP CRS<br><b>040°</b> | Rwy Idg<br>TDZE<br>Apf Elev | <b>7001</b><br><b>338</b><br><b>378</b> |
|--|------------------------|-----------------------------|---|

# RNAV (GPS) RWY 4

SCHENECTADY COUNTY (SCH)

RNP APCH - GPS

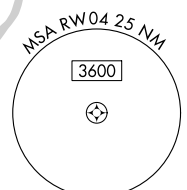
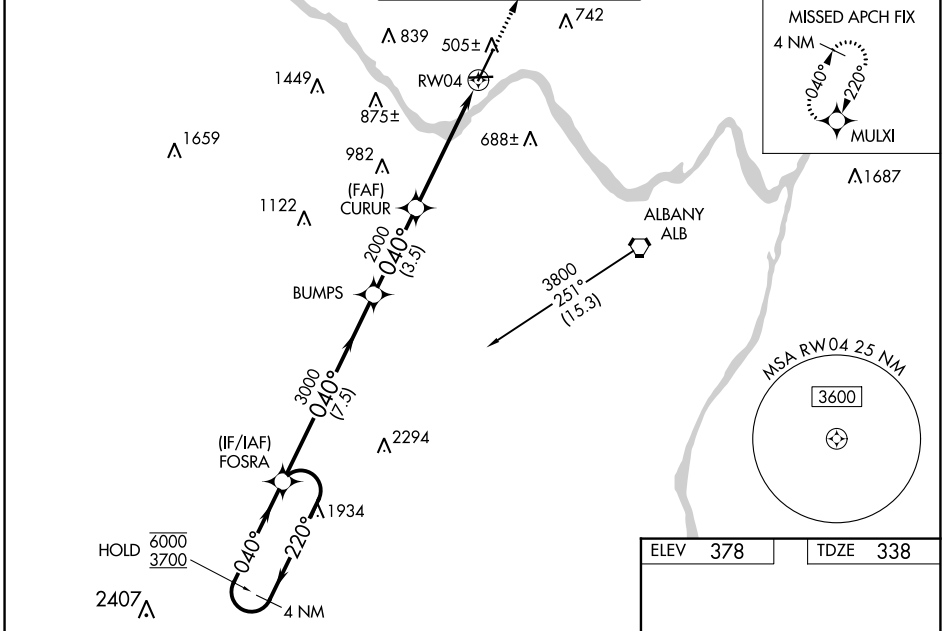
**▼** Circling Rwy 10 NA at night. Baro-VNAV and VDP NA when using Albany altimeter setting.  
**▲** Rwy 4 helicopter visibility reduction below 3/4 SM NA. Inop table does not apply to LPV.  
 For uncompensated Baro-VNAV systems, LNAV/VNAV NA below -15°C or above 54°C.  
 When local altimeter setting not received, use Albany altimeter setting and increase LPV DA to 621 feet, LNAV/VNAV DA to 638 feet, and increase all MDAs 40 feet. For inop ALS, increase LNAV/VNAV all Cats visibility to 3/8 SM and LNAV Cats A/B to 1 SM and Cats C/D to 1 1/8 SM. For inop ALS when using Albany altimeter setting, increase LPV all Cats visibility to 3/8 SM, increase LNAV/VNAV all Cats to 3/8 SM, increase LNAV Cats A/B visibility to 1 SM, and Cats C/D to 1 1/8 SM.

MALSR



MISSED APPROACH:  
Climb to 3000 direct  
MULXI and hold.

|                          |  |  |                         |                         |
|--------------------------|--|--|-------------------------|-------------------------|
| AWOS-3<br><b>119.275</b> | ALBANY APP CON<br><b>132.825 263.075</b> | SCHENECTADY TOWER *<br><b>121.3 (CTAF) 321.1</b> | GND CON<br><b>121.9</b> | UNICOM<br><b>122.95</b> |
|--------------------------|--|--|-------------------------|-------------------------|



|          |          |
|----------|----------|
| ELEV 378 | TDZE 338 |
|----------|----------|

4 NM Holding Pattern

VGSI and RNAV glidepath not coincident (VGSI Angle 3.00/TCH 51).

3000 MULXI

FOSRA

6000 ← 220°

3700 → 040°

GP 3.00° TCH 55

BUMPS

CURUR

2000

\*1.3 NM to RWY 4

RWY 4

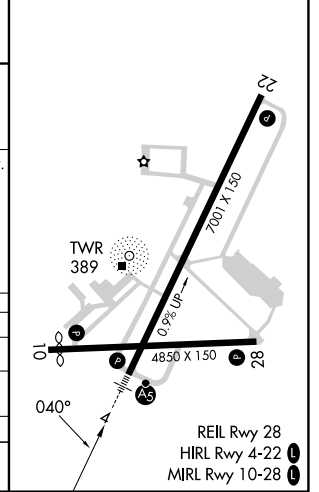
7.5 NM

3.5 NM

3.8 NM

1.3

| CATEGORY          | A                    | B                    | C                             | D                      |
|-------------------|----------------------|----------------------|-------------------------------|------------------------|
| LPV DA            |                      | 588-3/4              | 250 (300-3/4)                 |                        |
| LNAV/VNAV DA      |                      | 605-3/4              | 267 (300-3/4)                 |                        |
| LNAV MDA          | 800-3/4              | 462 (500-3/4)        | 800-1                         | 462 (500-1)            |
| <b>C</b> CIRCLING | 880-1<br>502 (600-1) | 940-1<br>562 (600-1) | 1120-2 1/4<br>742 (800-2 1/4) | 1320-3<br>942 (1000-3) |



NE-2, 26 DEC 2024 to 23 JAN 2025

NE-2, 26 DEC 2024 to 23 JAN 2025

REIL Rwy 28  
HIRL Rwy 4-22  
MIRL Rwy 10-28