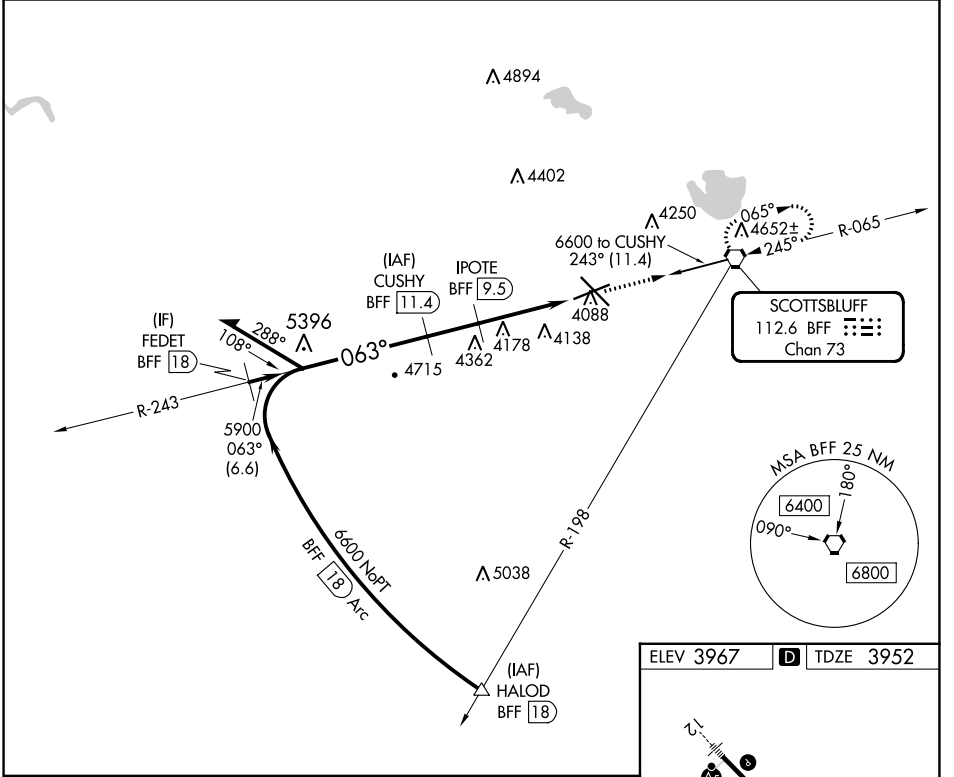


VORTAC BFF <b>112.6</b> Chan <b>73</b>	APP CRS <b>063°</b>	Rwy Idg TDZE Apt Elev	<b>8002</b> <b>3952</b> <b>3967</b>
--	------------------------	-----------------------------	---

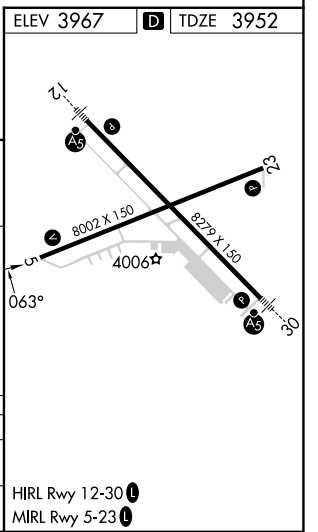
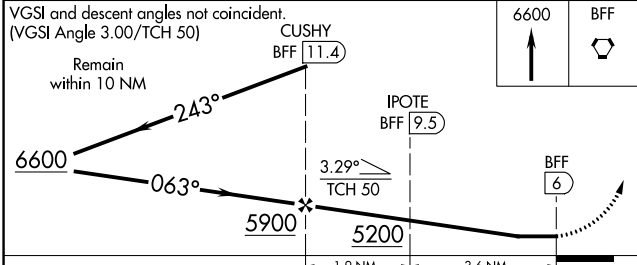
**VOR/DME RWY 5**  
SCOTTSLUFF/WESTERN NEBRASKA RGNL/WM B HEILIG FLD (BFF)

<b>▽</b> <b>▲</b> When local altimeter setting not received, use Alliance altimeter setting: increase all MDAs 100 feet and visibility Cats C and D ½ SM.	MISSED APPROACH: Climb to 6600 direct BFF VORTAC and hold, continue climb-in-hold to 6600.	
ASOS <b>121.025</b>	DENVER CENTER <b>127.95 338.2</b>	UNICOM <b>123.0 (CTAF)</b> <b>0</b>



NC-2, 26 DEC 2024 to 23 JAN 2025

NC-2, 26 DEC 2024 to 23 JAN 2025



CATEGORY	A	B	C	D
S-5	4480-1 528 (600-1)	4480-1½ 528 (600-1½)	4480-1¾ 528 (600-1¾)	4480-2 528 (600-2)
<b>C</b> CIRCLING	4500-1 533 (600-1)	4560-1½ 593 (600-1½)	4740-2½ 773 (800-2½)	

HIRL Rwy 12-30 **0**  
MIRL Rwy 5-23 **0**