

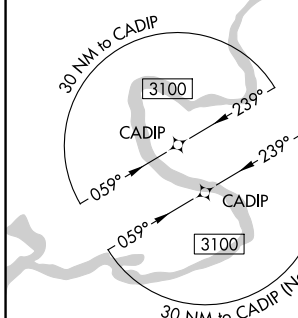
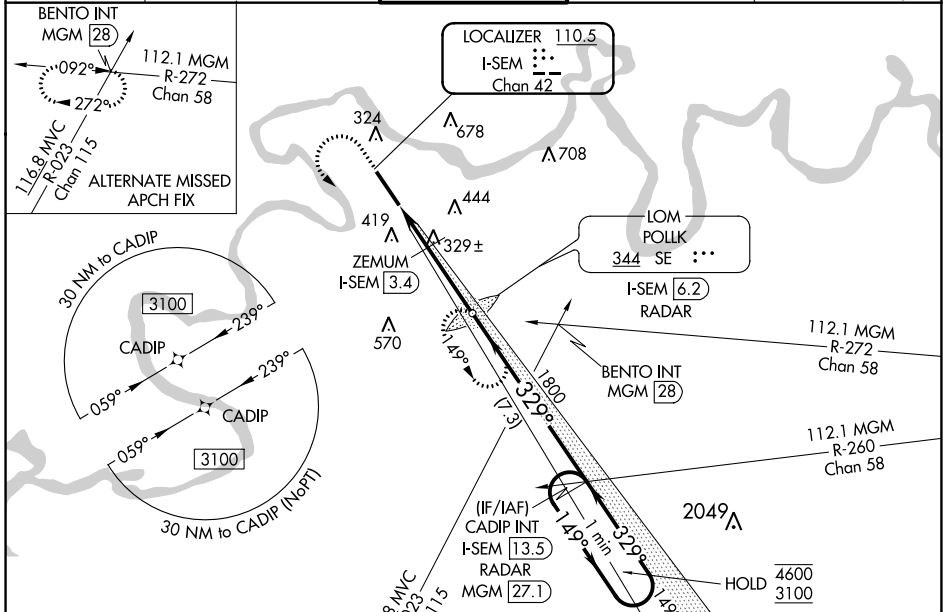
LOC/DME I-SEM <b>110.5</b> Chan <b>42</b>	APP CRS <b>329°</b>	Rwy Idg <b>8014</b> TDZE <b>165</b> Apt Elev <b>166</b>
---	------------------------	---

# ILS Y or LOC Y RWY 33

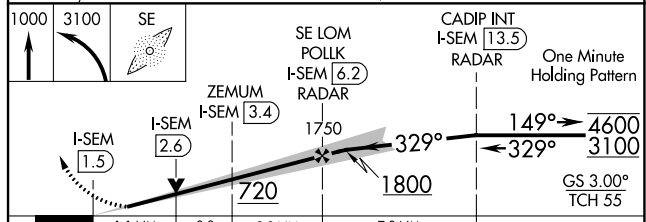
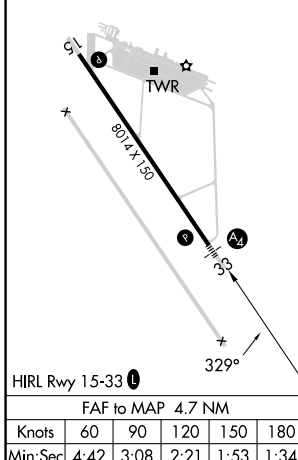
CRAIG FLD (SEM)

ADF required. RNP APCH - GPS.	MALS	MISSED APPROACH: Climb to 1000 then climbing left turn to 3100 direct POLK LOM/6.2 DME/RADAR and hold, continue climb-in-hold to 3100.
<p>⚠ Inop table does not apply to S-ILS 33. For inoperative ALS, increase S-LOC 33 Cat E visibility to 1½ SM and ZEMUM fix minimums</p> <p>⚠ NA S-LOC 33 Cats C-E visibility to 1½ SM.</p>		

AWOS-3PT <b>119.15</b>	MONTGOMERY APP CON * <b>124.0 363.025</b>	CRAIG TOWER* <b>120.85</b>	GND CON <b>121.675</b>	UNICOM <b>122.7 (CTAF) 0</b>
---------------------------	--	-------------------------------	---------------------------	---------------------------------



ELEV 166	TDZE 165
----------	----------



CATEGORY	A	B	C	D	E
S-ILS 33	365-¾			200 (200-¾)	415-¾ 250 (300-¾)
S-LOC 33	720-¾	555 (600-¾)	720-1⅓		555 (600-1⅓)
CIRCLING	720-1	760-1	760-1½	1040-2¾	1040-3
	554 (600-1)	594 (600-1)	594 (600-1½)	874 (900-2¾)	874 (900-3)
ZEMUM FIX MINIMUMS					
S-LOC 33	580-¾	415 (500-¾)	580-1		415 (500-1)
CIRCLING	660-1	760-1	760-1½	1040-2¾	1040-3
	494 (500-1)	594 (600-1)	594 (600-1½)	874 (900-2¾)	874 (900-3)

SE-4, 26 DEC 2024 to 23 JAN 2025

SE-4, 26 DEC 2024 to 23 JAN 2025