

SPOKANE, WASHINGTON

AL-403 (FAA)

24305

LOC/DME I-OLJ 111.1 Chan 48	APP CRS 031°	Rwy Idg TDZE 11002 2385 Apt Elev 2385
--	------------------------	--

ILS RWY 3 (SA CAT I)

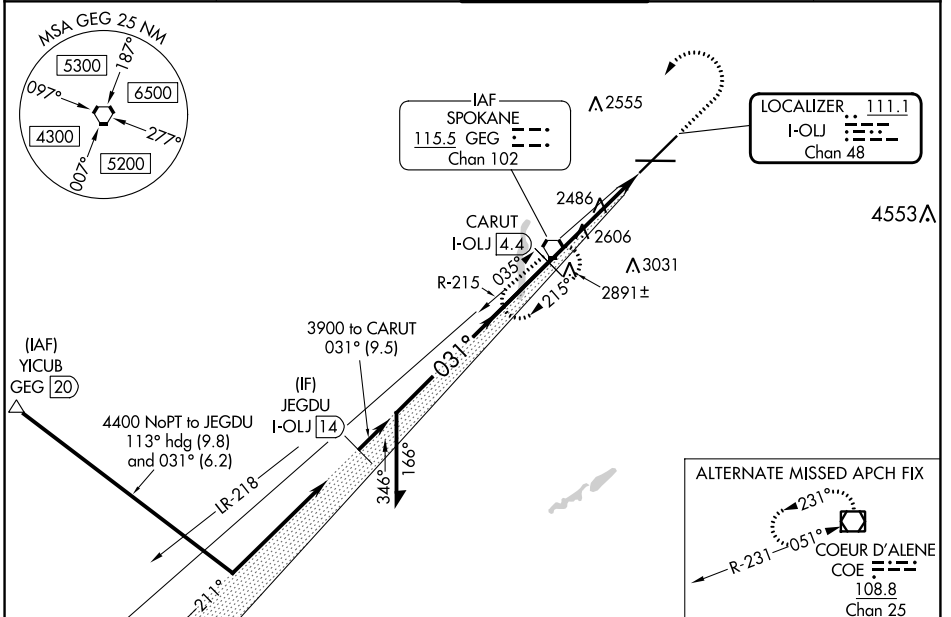
SPOKANE INTL (GEG)

Requires specific OPSPEC, MSPEC, or LOA approval.

ALSF-2

MISSED APPROACH: Climb to 2900 then climbing left turn to 4200 direct GEG VORTAC and hold, continue climb-in-hold to 4200.

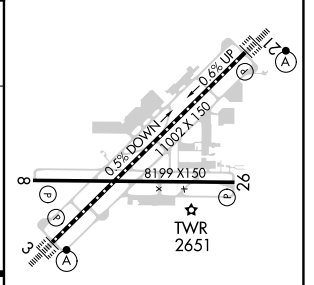
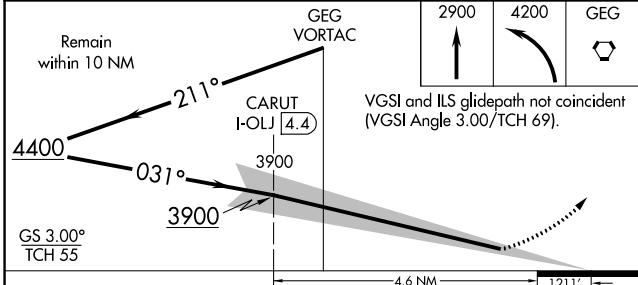
ATIS 124.325 254.375	SPOKANE APP CON 123.75 282.25 (205°-025°) 133.35 263.0 (026°-204°)	SPOKANE TOWER 118.3 278.3	GND CON 121.9 348.6	CLNC DEL 127.55
--------------------------------	--	-------------------------------------	-------------------------------	---------------------------



NW-1, 26 DEC 2024 to 23 JAN 2025

NW-1, 26 DEC 2024 to 23 JAN 2025

ELEV 2385	D	TDZE 2385
-----------	---	-----------



CATEGORY	A	B	C	D
S-ILS 3	RA 154/14 150 DA 2535			

SA CATEGORY I ILS - SPECIAL AIRCREW & AIRCRAFT CERTIFICATION REQUIRED

TDZ/CL Rwy 3 and 21
REIL Rwy 8 and 26
HIRL Rwy 3-21
MIRL Rwy 8-26

SPOKANE, WASHINGTON
Amdt 7B 15JUN23

47°37'N-117°32'W

ILS RWY 3 (SA CAT I)

SPOKANE INTL (GEG)