

WAAS CH 93501 W26A	APP CRS 257°	Rwy Idg TDZE Apt Elev	8199 2372 2385
---------------------------------	------------------------	-----------------------------	---

RNAV (GPS) Y RWY 26

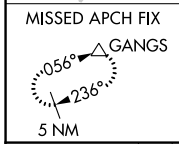
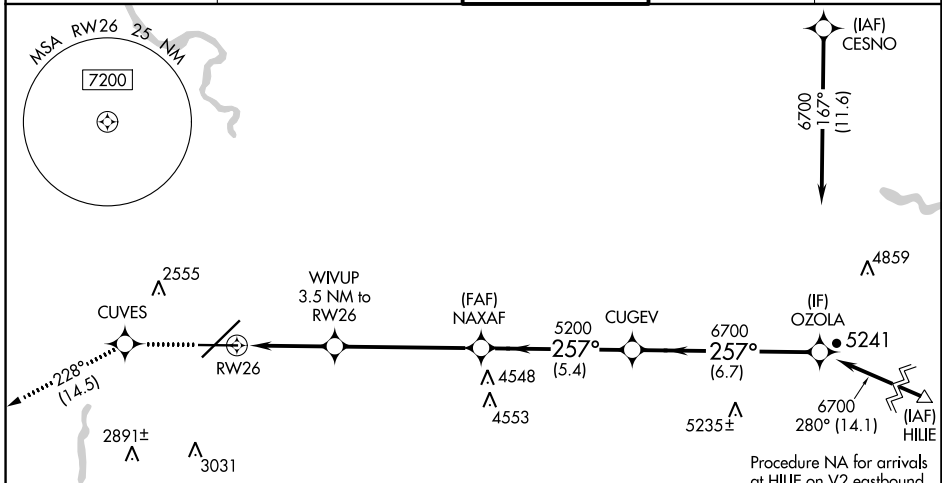
SPOKANE INTL (GEG)

RNP APCH.

⚠ Rwy 26 helicopter visibility reduction below ¼ SM NA.
⚠ For uncompensated Baro-VNAV systems, LNAV/VNAV NA below -18°C or above 54°C.

MISSED APPROACH: Climb to 5000 direct CUVES and on track 228° to GANGS and hold.

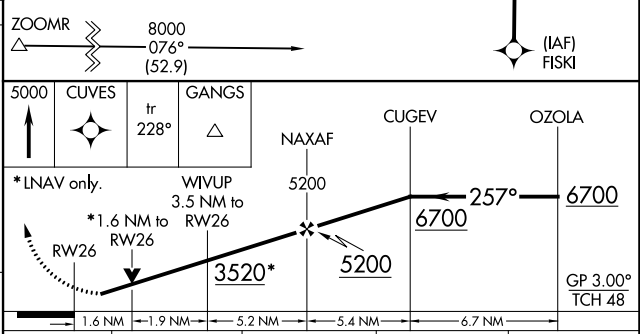
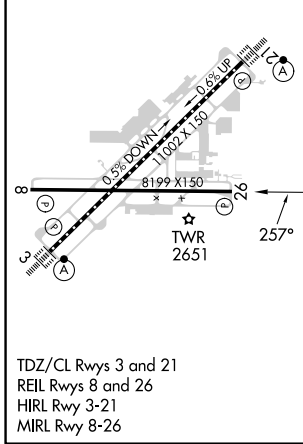
ATIS 124.325 254.375	SPOKANE APP CON 123.75 282.25 (205°-025°) 133.35 263.0 (026°-204°)	SPOKANE TOWER 118.3 278.3	GND CON 121.9 348.6	CLNC DEL 127.55
--------------------------------	--	-------------------------------------	-------------------------------	---------------------------



Procedure NA for arrivals at ZOOMR on V2-448 southwest bound.

Procedure NA for arrivals at HILIE on V2 eastbound.

ELEV 2385	D	TDZE 2372
-----------	----------	-----------



CATEGORY	A	B	C	D
LPV DA	2688-1		316 (400-1)	
LNAV/VNAV DA	2911-1½		539 (600-1½)	
LNAV MDA	2920-1	548 (600-1)	2920-1½	548 (600-1½)
C CIRCLING	2960-1 575 (600-1)	2980-1 595 (600-1)	3300-2¾ 915 (1000-2¾)	3400-3 1015 (1100-3)

NW-1, 26 DEC 2024 to 23 JAN 2025

NW-1, 26 DEC 2024 to 23 JAN 2025