

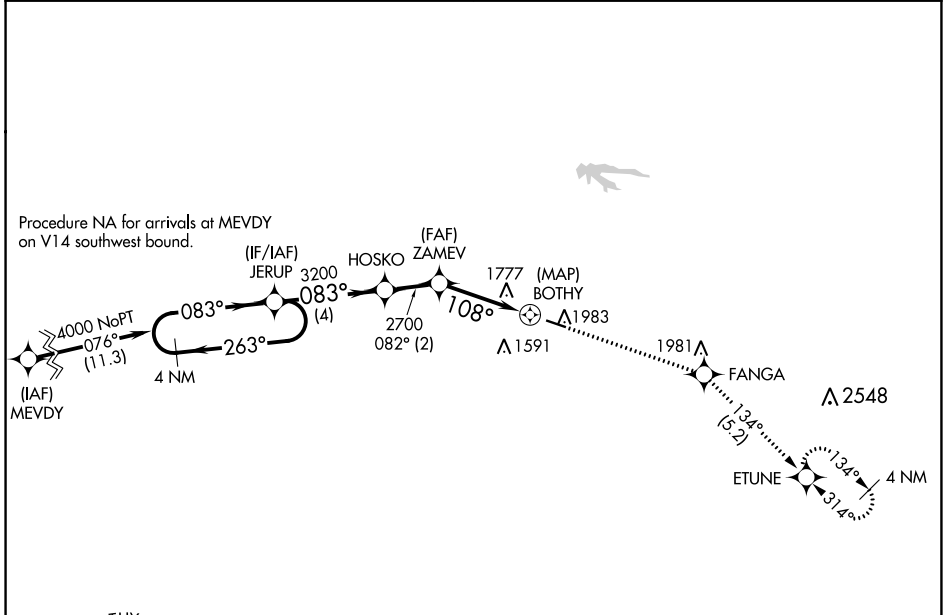
APP CRS 108°	Rwy Idg TDZE Apt Elev	N/A N/A 1375
------------------------	-----------------------------	---

RNAV (GPS)-A DOWNTOWN (3DW)

NA Circling NA north of Rwy 11-29. DME/DME RNP-0.3 NA.
 Use Springfield-Branson Ntl altimeter setting; when not received, use Branson West altimeter setting and increase all MDA 60 feet.
 Procedure NA at night. Helicopter visibility reduction below 1 SM NA.

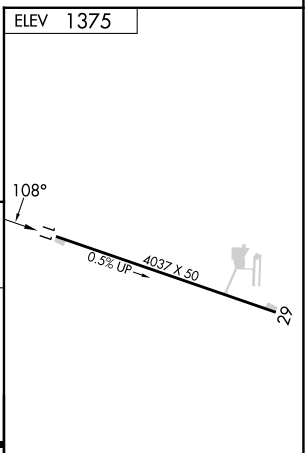
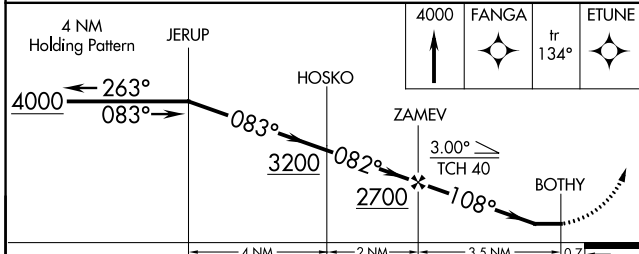
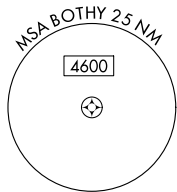
MISSED APPROACH: Climb to 4000 direct FANGA and track 134° to ETUNE and hold.

SPRINGFIELD APP CON 124.95 353.925	UNICOM 122.8 (CTAF) 0
--	---------------------------------



NC-3, 26 DEC 2024 to 23 JAN 2025

NC-3, 26 DEC 2024 to 23 JAN 2025



CATEGORY	A	B	C	D
CIRCLING	2060-1	685 (700-1)	NA	

MIRL Rwy 11-29 0