

HI-TACAN Z RWY 22R

TACAN SSC Chan 38	APCH CRS 222°
--------------------------	----------------------

22R	22L
Rwy ldg 10,014	8014
TDZE 240	235
Arprt Elev 241	241

JAL-409 [USAF]

SHAW AFB (KSSC)

V * When ALS inop, increase vis to 1½ miles.
 ** When ALS inop, increase vis to 1¾ miles.

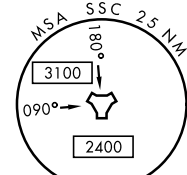
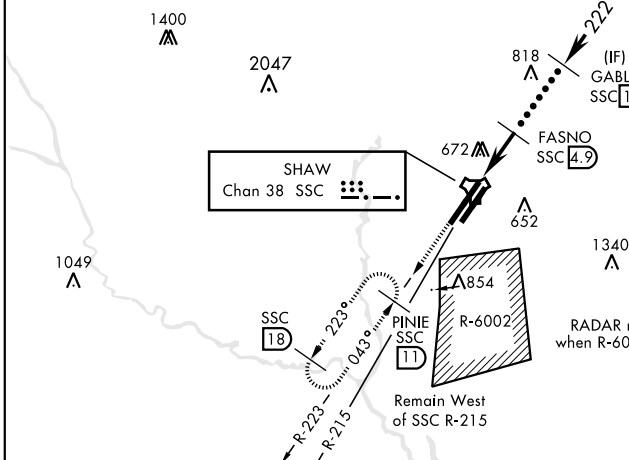
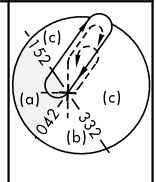


MISSED APPROACH: Climbing to 2000, intercept SSC TACAN R-223 to PINIE and hold.

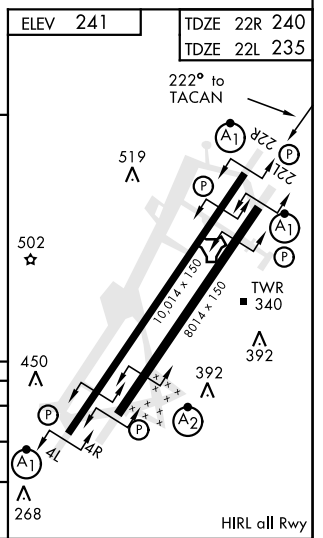
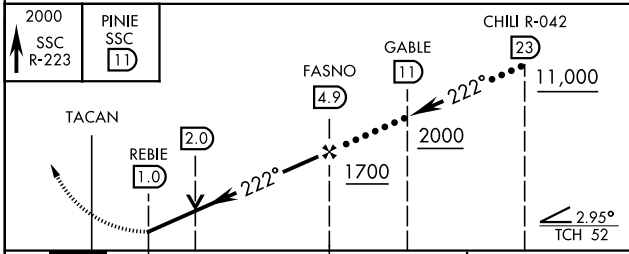
ATIS ★ 132.125 270.1	SHAW APP CON 125.4 318.1	SHAW TOWER ★ 126.65 254.25	GND CON 126.1 275.8	CLNC DEL 126.1 275.8
--------------------------------	------------------------------------	--------------------------------------	-------------------------------	--------------------------------

USAF Only: When Rwy 4L VGSi inop, circling to Rwy 4L at night requires approval from MAJCOM director of Ops or equivalent. Terrain 242' MSL, 200' prior to threshold.

USAF Only: When VGSi inop, sidestep to Rwy 22L, circling to Rwy 22L at night requires approval from MAJCOM Director of Ops or equivalent. Terrain 239' MSL, 200' prior to threshold, 200' right of course.



EMERG SAFE ALT 100 NM 3800



CATEGORY	C	D	E
S-22R*	760/55	520 (600-1)	
SIDESTEP 22L**	760/55	505 (600-1)	
CIRCLING	1000-2¼ 759 (800-2¼)	1000-2½ 759 (800-2½)	1000-2¾ 759 (800-2¾)

HI-TACAN Z RWY 22R

SE-2, 26 DEC 2024 to 23 JAN 2025

SE-2, 26 DEC 2024 to 23 JAN 2025