

SUMTER, SOUTH CAROLINA

TACAN Y RWY 22R

TACAN SSC Chan 38	APCH CRS 222°	Rwy Ldg TDZE 240 Arprt Elev 241	22R 22L
			10,014 8014
			240 235
			241 241

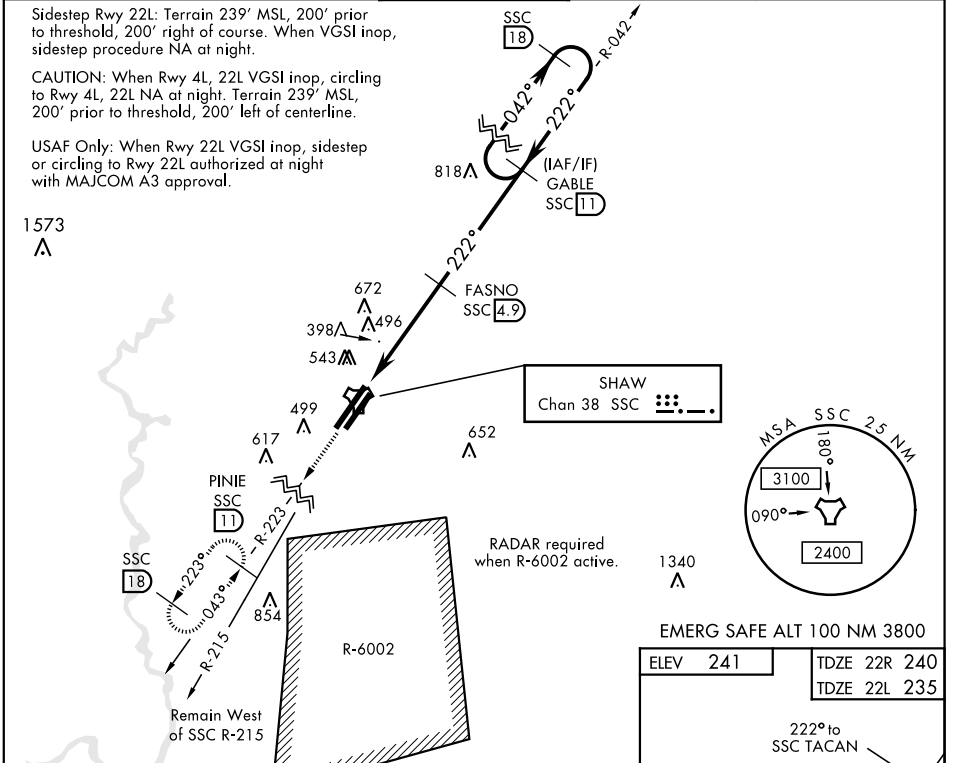
AL-409 [USAF]

SHAW AFB (KSSC)

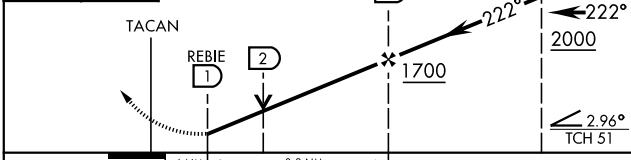
▼ * When ALS inop, increase CAT AB RVR to 55, vis to 1 mile; CAT CDE vis to 1½ miles.
 ** When ALS inop, increase CAT AB RVR to 55, vis to 1 mile; CAT CDE vis to 1¾ miles.

ALSF-1 MISSED APPROACH: Climbing to 2000, intercept SSC TACAN R-223 to PINIE and hold.

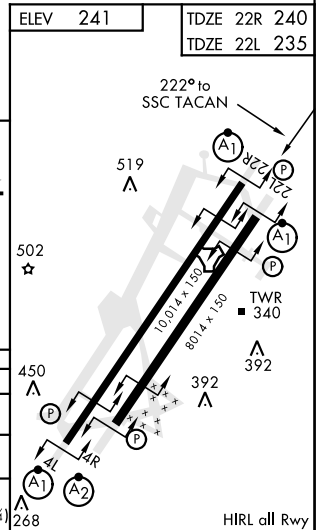
ATIS ★ 132.125 270.1	SHAW APP CON 125.4 318.1	SHAW TOWER ★ 126.65 254.25	GND CON 126.1 275.8	CLNC DEL 126.1 275.8
--------------------------------	------------------------------------	--------------------------------------	-------------------------------	--------------------------------



2000 SSC R-223	PINIE SSC 11	FASNO 4.9	GABLE R-042 11
-------------------	-----------------	--------------	-------------------



CATEGORY	A	B	C	D	E
S-22R*	760/24 520 (600-½)		760/55 520 (600-1)		
SIDESTEP** 22L	760/50 505 (600-1)		760/55 505 (600-1)		
CIRCLING	820-1 579 (600-1)	880-1 639 (700-1)	1000-2¼ 759 (800-2¼)	1000-2½ 759 (800-2½)	1000-2¾ 759 (800-2¾)



SUMTER, SOUTH CAROLINA
Amdt 1 07NOV19

33° 58' N-80° 28' W

SHAW AFB (KSSC)

TACAN Y RWY 22R

SE-2, 26 DEC 2024 to 23 JAN 2025

SE-2, 26 DEC 2024 to 23 JAN 2025