

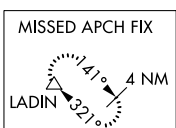
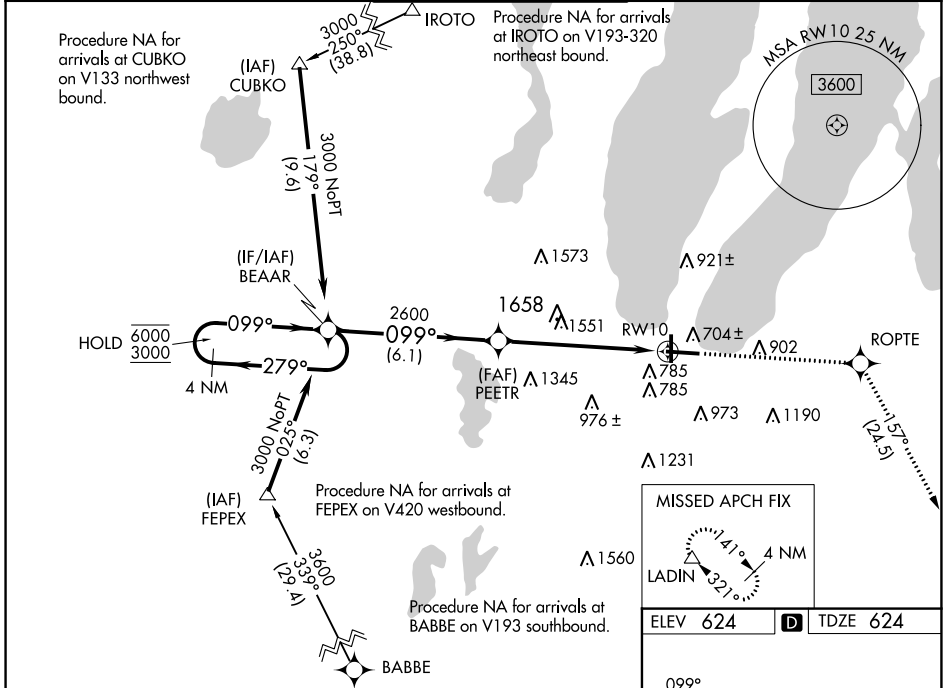
WAAS CH 42610 W10A	APP CRS 099°	Rwy Idg 7016 TDZE 624 Apt Elev 624
--	------------------------	---

RNAV (GPS) RWY 10

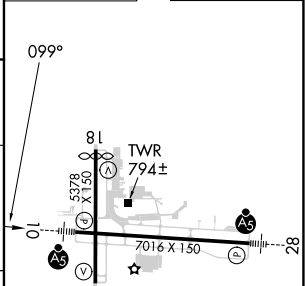
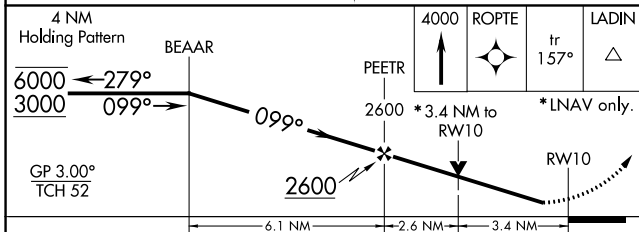
CHERRY CAPITAL (TVC)

RNP APCH.	MALSRL AS	MISSED APPROCH: Climb to 4000 direct ROPTe and on track 157° to LADIN and hold.
<p>▼ For uncompensated Baro-VNAV systems, LNAV/VNAV NA below -19°C (-2°F) or above 54°C (130°F). Rwy 10 helicopter visibility reduction below 3/4 SM NA. For inop ALS, increase LPV visibility all Cats 1/2 SM. Inop table does not apply to LNAV/VNAV all Cats and LNAV Cats C/D.</p>		

ATIS 119.175	MINNEAPOLIS CENTER 132.9 338.3	TRAVERSE CITY TOWER* 124.2 (CTAF) 0 348.6	GND CON 121.8 348.6	UNICOM 122.95
------------------------	--	---	-------------------------------	-------------------------



ELEV 624	TDZE 624
----------	----------



CATEGORY	A	B	C	D
LPV DA	909-3/4		285 (300-3/4)	
LNAV/VNAV DA	1983-5		1359 (1400-5)	
LNAV MDA	1780-3/4 1156 (1200-3/4)	1780-1 1156 (1200-1)	1780-3	1156 (1200-3)
CIRCLING	1780-1 1/4 1156 (1200-1 1/4)	1780-1 1/2 1156 (1200-1 1/2)	1780-3	1156 (1200-3)

- HIRL Rwy 10-28
- MIRL Rwy 18-36
- REIL Rwy 36

EC-1, 26 DEC 2024 to 23 JAN 2025

EC-1, 26 DEC 2024 to 23 JAN 2025