

| | | | |
|--|------------------------|-----------------------------|---|
| WAAS CH 53733 W36A | APP CRS 005° | Rwy Idg TDZE Apt Elev | 5108 624 624 |
|--|------------------------|-----------------------------|---|

RNAV (GPS) RWY 36

CHERRY CAPITAL (TVC)

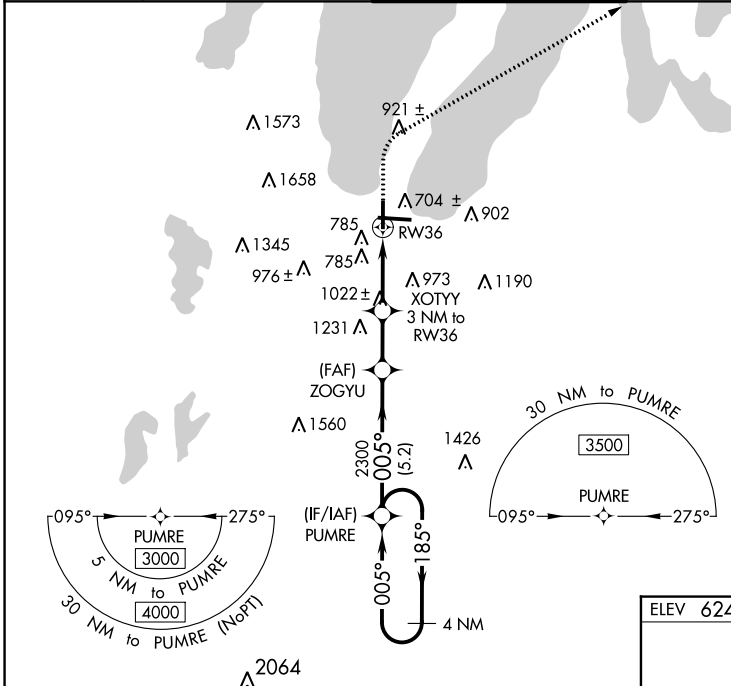
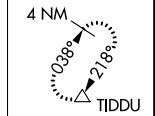
RNP APCH - GPS.

⚠ Baro-VNAV NA when using ACB altimeter setting. For uncompensated Baro-VNAV systems, LNAV/VNAV NA below -16°C or above 54°C. When local altimeter setting not received use ACB altimeter setting: increase all DA 51 feet and all MDA 60 feet, increase LNAV/VNAV all Cats and Circling Cat C visibilities ¼ SM, and increase LPV all Cats, LNAV Cat C/D and Circling Cat D visibilities ½ SM. Helicopter visibility reduction below ¾ SM NA.

MISSED APPROACH:
Climb to 1400 then climbing right turn to 3000 direct TIDDU and hold.

| | | | | |
|------------------------|--|---|-------------------------------|-------------------------|
| ATIS 119.175 | MINNEAPOLIS CENTER 132.9 338.3 | TRAVERSE CITY TOWER * 124.2(CTAF) 0 348.6 | GND CON 121.8 348.6 | UNICOM 122.95 |
|------------------------|--|---|-------------------------------|-------------------------|

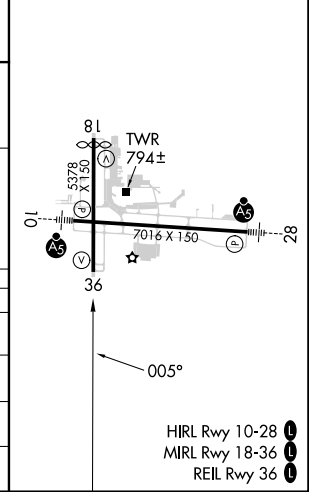
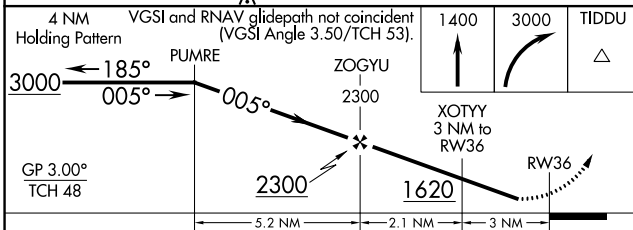
MISSED APCH FIX



EC-1, 26 DEC 2024 to 23 JAN 2025

EC-1, 26 DEC 2024 to 23 JAN 2025

| | |
|----------|-------------------|
| ELEV 624 | D TDZE 624 |
|----------|-------------------|



| CATEGORY | A | B | C | D |
|-------------------|--------------------|---|---|---|
| LPV DA | 899-7/8 | | 275 (300-7/8) | |
| LNAV/VNAV DA | 1146-1¼ | | 522 (600-1¼) | |
| LNAV MDA | 1280-1 656 (700-1) | | 1280-17/8 656 (700-17/8) | |
| C CIRCLING | 1280-1 656 (700-1) | | 1500-2½ 876 (900-2½) 1720-3 1096 (1100-3) | |

- HIRL Rwy 10-28
- MIRL Rwy 18-36
- REIL Rwy 36