

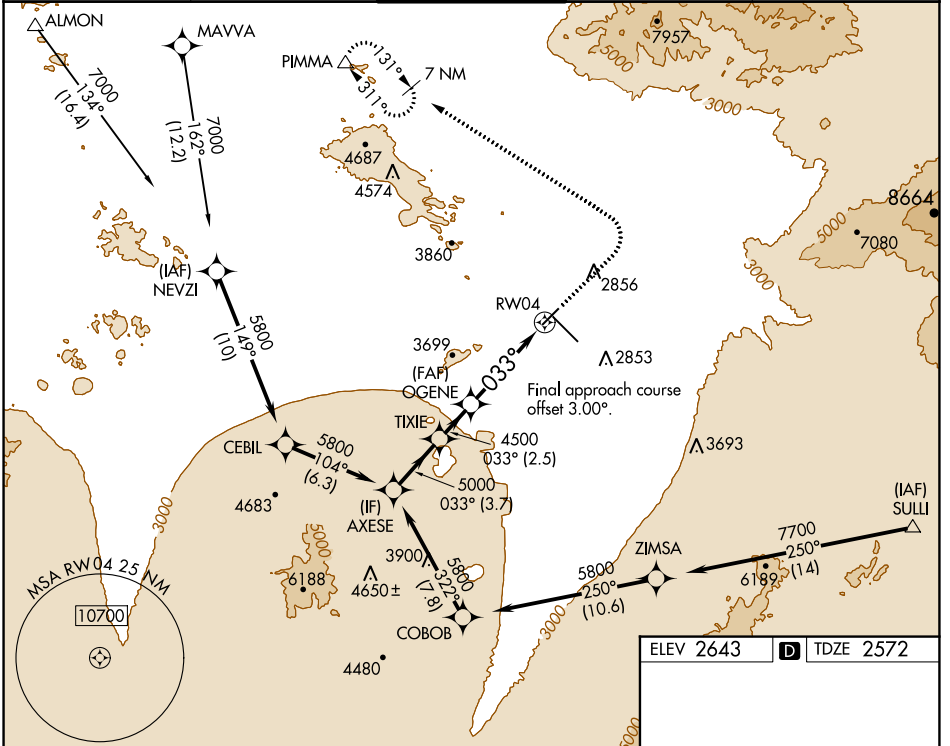
APP CRS	Rwy Idg	6150
033°	TDZE	2572
	Apt Elev	2643

RNAV (GPS) RWY 4

TUCSON INTL (TUS)

RNP APCH - GPS.		MISSED APPROACH: Climb to 3500 then climbing left turn to 6500 direct PIMMA and hold.
▽ Rwy 4 helicopter visibility reduction below 3/4 SM NA. For uncompensated Baro-VNAV systems, LNAV/VNAV NA below -2°C or above 54°C.		

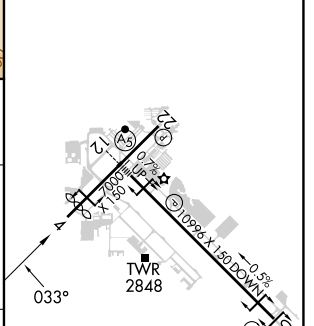
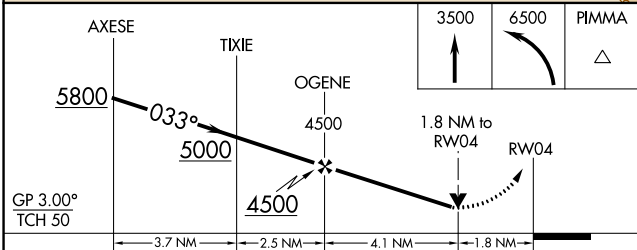
ATIS 123.8 279.65	TUCSON APP CON 119.4 318.1	TUCSON TOWER 118.3 257.8	GND CON 120.025 348.6	CLNC DEL 126.65 326.2
-----------------------------	--------------------------------------	---	---------------------------------	---------------------------------



SW-4, 26 DEC 2024 to 23 JAN 2025

SW-4, 26 DEC 2024 to 23 JAN 2025

ELEV 2643	D TDZE 2572
-----------	--------------------



CATEGORY	A	B	C	D
LNAV/VNAV DA	3284-2 1/2		712 (700-2 1/2)	
LNAV MDA	3180-1	608 (600-1)	3180-1 3/4	608 (600-1 3/4)
CIRCLING	3180-1 537 (600-1)	3220-1 577 (600-1)	3220-1 3/4 577 (600-1 3/4)	3660-3 1017 (1100-3)

HIRL Rwy 12-30
MIRL Rwy 4-22
REIL Rwy 22 and 30